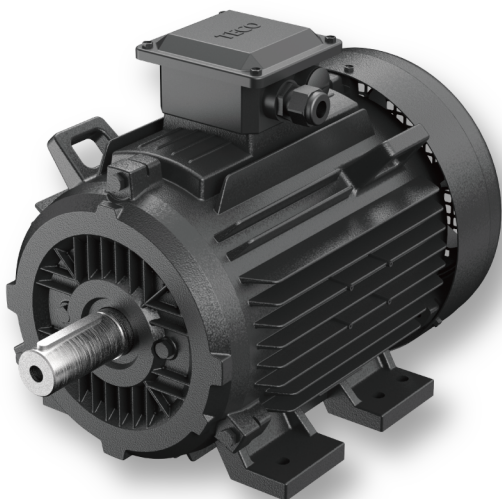


Ultra-High Efficiency Permanent Magnet Synchronous Motor

DVEC / DVDC series



TECO 

Together, we empower the **Future** 



Contents

01 - 03	Product Features & Specifications
04	Motor T-N Curve
05	DVEC / DVDC 380V (1000rpm)
06	DVEC / DVDC 380V (1500rpm)
07	DVEC / DVDC 380V (3000rpm)
08 - 18	DVEC(B3) Outline Dimensions
19 - 25	DVDC(B5) Outline Dimensions
26 - 36	DVEC(B35) Outline Dimensions
37 - 47	DVDC(V1) Outline Dimensions

Motor Introduction

Ultra-High Efficiency PM Motor - Built for High-Energy Industrial Applications Following IE5 Standards

TECO Ultra-High-Efficiency Permanent Magnet Motors deliver outstanding energy savings with an advanced NdFeB permanent magnet design that meets the IE5 efficiency standard. Engineered for use with VFDs, they enable precise speed control and optimized energy performance, ideal for pumps, compressors, and blowers.

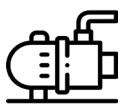
Featuring a patented lightweight structure, the motor offers stable, low-noise operation with a 35% reduction in size and weight. With IP55 protection and ISO-certified reliability, it is the smart choice for industrial energy-efficiency upgrades.

Key Features



Ultra-High Efficiency & Energy Saving

- IE5 efficiency class with high-grade NdFeB permanent magnets
- Wide high-efficiency range, stable performance even at low speed and load



High Torque at Low Speed

- Rated torque output at low speed, ideal for heavy-duty applications
- Suitable for rubber mixers, plastic extruders, and crushers
- Optimized for VFD operation with bidirectional control



Low Noise & Low Vibration Design

- Patented rotor structure reduces vibration and noise
- Patented stator design improves low-speed torque and starting performance



Compact & Lightweight Construction

- Over 35% reduction in size and weight compared to induction motors
- Saves installation space and lowers system cost



Certified Reliability & Industrial Safety

- Totally enclosed IP55 design for harsh industrial environments
- Certified to ISO 9001 / ISO 14001 / OHSAS 18001



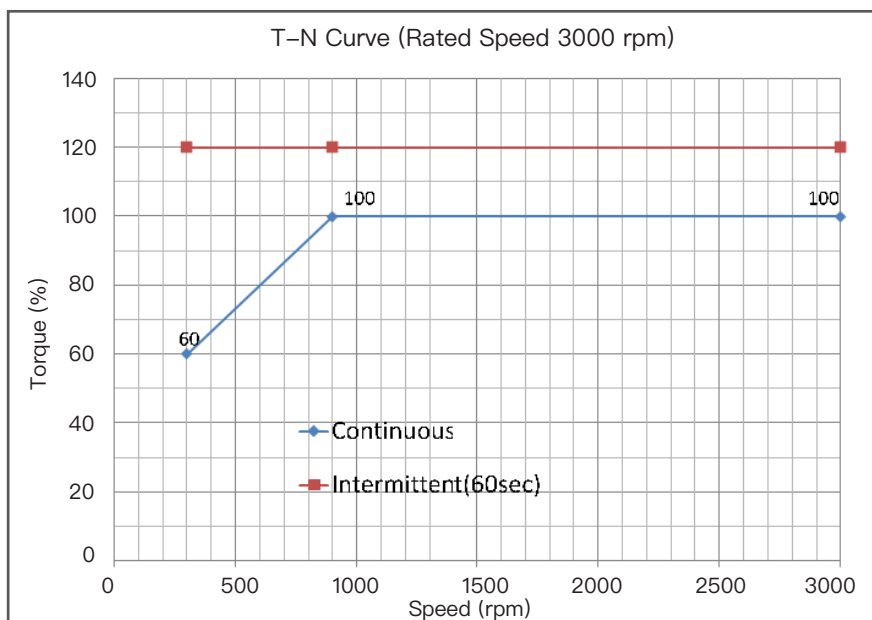
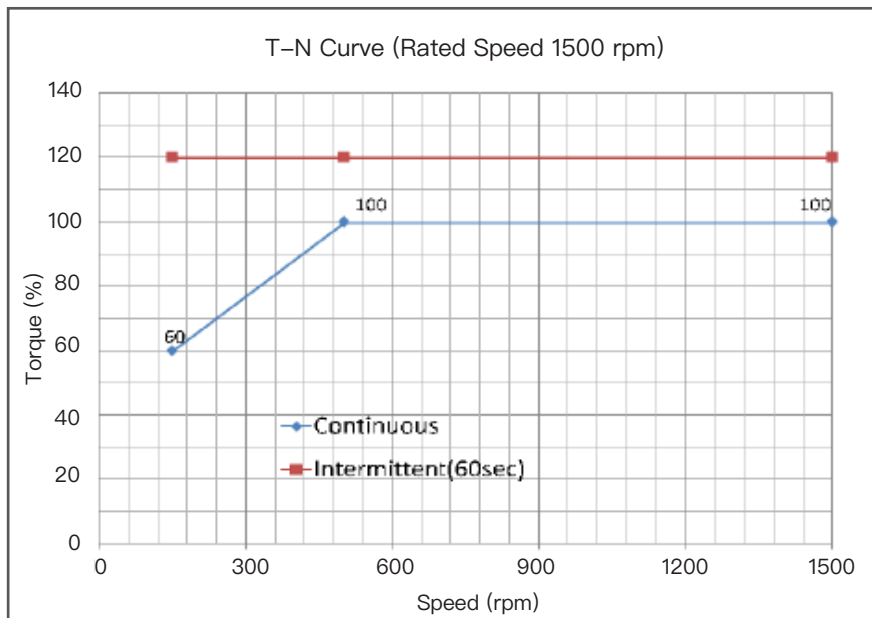
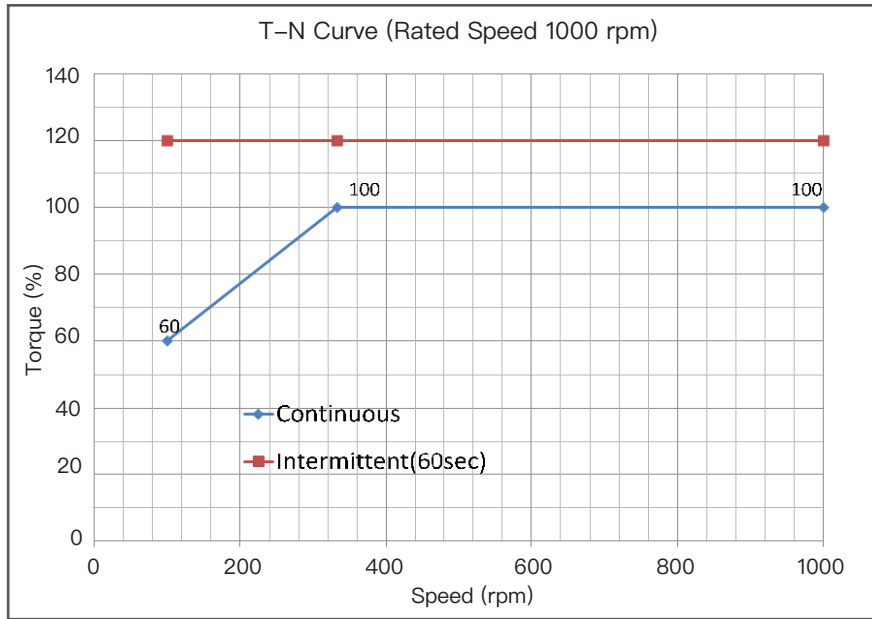
Product Information

R A T I N G	Kind of Motors	Permanent Magnet Motors (PM Motor)	
	Voltages	380V	
	Output Range	0.75kW ~ 400kW	
	R.P.M	Rated 1000, 1500, 3000 R.P.M.	
	Time Duty	Continuous, S.F. 1.0 (S1)	
	Frame Size	F80 ~ F355L	
	Protection Enclosure	Totally Enclosed (IP55)	
	Cooling Method	Self External Fan, Surface Cooling (IC 411)	
	Mounting	DVEC : Horizontal Foot Mounted B3 (IM 1001) DVDC : Horizontal Flange Mounted B5 (IM 3001) DVEC : Horizontal Foot And Flange Mounted B35 (IM 2001) DVDC : Vertical Flange Mounted, Shaft Down V1 (IM 3011)	
A P P L I C A T I O N	Power Condition	Voltage : $\pm 10\%$, Frequency : $\pm 5\%$, AND $\pm 10\%$ of Combined Voltage and Frequency, But Frequency Variation does not Exceed $\pm 5\%$.	
	Environment Conditions	Shadow, Non-Hazardous.	
	Ambient Temperature	-15 to 40°C	
	Altitude	Less Than 1,000 Meters	
	Drive Method	Direct-Coupling Service Only	
	Direction of Rotation	CW According to IEC Definition, Suitable For Bi – Directional Operation	
C O N S T R U C T I O N	Dimensions	Mounting	Frame Nos
		IM B3	80 ~ 355L
		IM B5	80 ~ 315M
		IM B35	80 ~ 355L
		IM V1	80 ~355L
	End Bracket (Shield)	High Grade Cast Iron	
	External Fan	Polypropylene	
	Fan Cover (Hood)	Pressed Steel	
	Shaft	Carbon Steel, Cylindrical Single Extension With Keyseat and Key	
	Bearing	Vacuum De – Gassed High Quality Open Bearings for Frame Nos. 180M ~ 355L, Grease Pre – Packed Shielded Rolling Bearings for the Others	
Lubricant	Mineral Oil , Li – Base Grease , Mobil Polyrex EM Grease for F#180 and Above		
Shaft Flinger	Bracket : V Seal. Flange : Oil Seal & F#225 and Above : Oil Seal on Both End. F#180 and Above : use GAMMA seal at 3000 RPM		

Product Information

C O N S T R U C T I O N	Terminal Box	F80~F250 : On the Top of the Frame View From the Drive End,Can be Set 90° Apart (Except Face the Drive End For F#80MB&F100MB). F280~F355 : On the Top of the Frame View From the Drive End,Can be Set 90° Apart ,Except Face the Drive End. The size of the T-box of the 3000 RPM motor is special,please confirm with the supplier before placing an order.				
	Lead Terminal	3 Leads				
	Iron Core	High Grade, Insulated, Cold-Rolled Electro – Magnetic Steel Plate				
	Stator Winding	Pre-Formed, Random Wound, Made of Heavy, Heat – Resist Polyester Enameled Copper Wire.				
	Stator Insulation	Class F Insulation System				
	Varnish Treatment	Phenolic Alkyd Resin Varnish				
	Rotor Structure	Permanent Magnet NdFeB				
	Painting	Phenolic Rust Proof Base Plus Lacquer Surface Finished Painting in : RAL-6021(7.5GY 6.5/3)				
	Name Plate	Stainless Steel Plate				
	Bolt Thread	ISO Metric System				
	Grounding Terminal	Be Set Inside The Terminal Box (another Grounding on the outside of 100kW up)				
P E R F O R M A N C E	Temperature Rise	Not to Exceed 80K for S.F.1.0 by Resistance Method				
	Over Torque	120% Rated Torque for 60 Sec.				
	Vibration (r.m.s)	Vibration grade	Shaft height / mm	80 ≤ H ≤ 132	132 < H ≤ 250	H > 280
			Mounting	Velocity mm/s		
		A	Free suspension	1.6	2.2	2.8
		Rigid mounting	1.3	1.8	2.3	

MOTOR T-N curve



Performance Data

DVEC / DVDC 380V (1000rpm)

OUTPUT		P	Hz	FRAME NO.	RPM	TORQUE		CURRENT		INDUCED VOLTAGE CONSTANT (V/kprm)	Eff. (%)	APPROX. WEIGHT (Kg)
HP	kW					RATED (Nm)	MAX. (Nm)	RATED (Arms)	MAX. (Arms)			
1	0.75	6	50	80MA	1000	7.2	8.6	1.5	1.8	340.0	86.0	21.2
2	1.5	6	50	100LA	1000	14.3	17.2	2.9	3.5	340.0	88.6	34.5
3	2.2	6	50	100LA	1000	21.0	25.2	4.3	5.2	340.0	89.9	37.2
5	3.7	6	50	100LA	1000	35.3	42.4	7.0	8.4	340.0	91.4	43.4
7.5	5.5	6	50	100LB	1000	52.5	63.0	10.3	12.4	340.0	92.4	48.6
10	7.5	6	50	132S	1000	71.6	85.9	14.0	16.8	340.0	93.0	58.4
15	11	6	50	132M	1000	105.0	126.1	20.4	24.4	340.0	93.8	65.8
20	15	6	50	160M	1000	143.2	171.9	27.6	33.1	340.0	94.4	108.6
25	18.5	6	50	160M	1000	176.7	212.0	33.9	40.7	340.0	94.7	114.5
30	22	6	50	160L	1000	210.1	252.1	40.2	48.3	340.0	95.0	133.2
40	30	8	67	180L	1000	286.5	343.8	54.6	65.5	350.0	95.4	180.3
50	37	8	67	200L	1000	353.3	424.0	67.1	80.6	350.0	95.7	246.6
60	45	8	67	225M	1000	429.7	515.7	81.5	97.8	350.0	95.9	331.2
75	55	8	67	250M	1000	525.2	630.3	99.4	119.3	350.0	96.1	393.4
100	75	8	67	250M	1000	716.2	859.4	135.1	162.1	350.0	96.4	435.5
125	90	8	67	280S	1000	859.4	1031.3	161.8	194.1	350.0	96.6	689.3
150	110	8	67	280M	1000	1051	1261.2	198.1	237.8	350.0	96.4	726.1
175	132	8	67	280M	1000	1261	1513.2	237.3	284.7	350.0	96.6	785.8
215	160	8	67	315S	1000	1528	1833.6	287.3	344.8	350.0	96.7	786.7
250	185	8	67	315M	1000	1767	2120.4	331.9	398.2	350.0	96.8	957.6
270	200	8	67	315M	1000	1910	2292.0	358.8	430.5	350.0	96.8	999.5
335	250	8	67	315L	1000	2388	2865.6	448.5	538.2	350.0	96.8	1188.7
375	280	8	67	355M	1000	2674	3208.8	502.3	602.7	350.0	96.8	1972.0
420	315	8	67	355M	1000	3008	3609.6	565.1	678.1	350.0	96.8	2058.0

NOTE :

1. Efficiency, speed and torque are the same for other voltages. Current values and induced voltage constant vary inversely with voltage.
2. The above are typical values based on test according to GB/T 32877 2-3- A, GB30253-2024.

Performance Data

DVEC / DVDC 380V (1500rpm)

OUTPUT		P	Hz	FRAME NO.	RPM	TORQUE		CURRENT		INDUCED VOLTAGE CONSTANT (V/kprm)	Eff. (%)	APPROX. WEIGHT (Kg)
HP	kW					RATED (Nm)	MAX. (Nm)	RATED (Arms)	MAX. (Arms)			
1	0.75	6	75	80MA	1500	4.8	5.7	1.5	1.8	226.7	87.8	18.9
2	1.5	6	75	80MA	1500	9.5	11.5	2.9	3.5	226.7	90.1	23.0
3	2.2	6	75	80MB	1500	14.0	16.8	4.2	5.0	226.7	91.1	27.0
5	3.7	6	75	100LA	1500	23.6	28.3	7.0	8.3	226.7	92.4	39.8
7.5	5.5	6	75	100LA	1500	35.0	42.0	10.3	12.4	226.7	93.2	43.4
10	7.5	6	75	100LB	1500	47.7	57.3	13.9	16.7	226.7	93.8	48.6
15	11	6	75	132S	1500	70.0	84.0	20.2	24.3	226.7	94.4	58.4
20	15	6	75	132M	1500	95.5	114.6	27.5	33.0	226.7	94.9	65.8
25	18.5	6	75	160M	1500	117.8	141.3	33.8	40.5	226.7	95.1	100.8
30	22	6	75	160M	1500	140.1	168.1	40.1	48.1	226.7	95.3	108.6
40	30	8	100	180M	1500	191.0	229.2	54.4	65.3	226.7	95.8	139.3
50	37	8	100	180L	1500	235.5	282.7	66.9	80.3	226.7	96.0	161.7
60	45	8	100	180L	1500	286.5	343.8	81.2	97.5	226.7	96.2	180.3
75	55	8	100	200L	1500	350.1	420.2	99.1	118.9	226.7	96.4	262.1
100	75	8	100	225S	1500	477.5	573.0	134.8	161.8	233.3	96.6	324.9
125	90	8	100	250M	1500	573.0	687.5	161.5	193.8	233.3	96.8	365.6
150	110	8	100	250M	1500	700.3	840.3	197.7	237.3	233.3	96.6	435.5
175	132	8	100	250M	1500	840.3	1008.4	237.0	284.4	233.3	96.7	482.3
215	160	8	100	280M	1500	1019	1222.8	286.7	344.1	233.3	96.9	726.1
250	185	8	100	280M	1500	1178	1413.6	330.8	397.0	233.3	97.1	785.8
270	200	8	100	315S	1500	1274	1528.8	357.7	429.2	233.3	97.1	786.7
335	250	8	100	315M	1500	1592	1910.4	447.1	536.5	233.3	97.1	894.7
375	280	8	100	315M	1500	1783	2139.6	500.7	600.9	233.3	97.1	957.6
420	315	8	100	315M	1500	2006	2407.2	563.3	676.0	233.3	97.1	1027.5
475	355	8	100	315L	1500	2260	2712.0	634.9	761.9	233.3	97.1	1146.8
500	375	8	100	355M	1500	2388	2865.6	670.6	804.7	233.3	97.1	1903.3
540	400	8	100	355L	1500	2547	3056.4	715.3	858.4	233.3	97.1	1972.1

NOTE : 1. Efficiency, speed and torque are the same for other voltages.

Current values and induced voltage constant vary inversely with voltage.

2. The above are typical values based on test according to GB/T 32877 2-3- A, GB30253-2024.

Performance Data

DVEC / DVDC 380V (3000rpm)

OUTPUT		P	Hz	FRAME NO.	RPM	TORQUE		CURRENT		INDUCED VOLTAGE CONSTANT (V/krpm)	Eff. (%)	APPROX. WEIGHT (Kg)
HP	kW					RATED (Nm)	MAX. (Nm)	RATED (Arms)	MAX. (Arms)			
1	0.75	6	150	80MA	3000	2.4	2.9	1.5	1.8	113.3	85.9	17.2
2	1.5	6	150	80MA	3000	4.8	5.7	2.9	3.5	113.3	88.6	18.9
3	2.2	6	150	80MA	3000	7.0	8.4	4.3	5.2	113.3	89.9	23.0
5	3.7	6	150	100LA	3000	11.8	14.1	7.0	8.4	113.3	91.3	31.0
7.5	5.5	6	150	100LA	3000	17.5	21.0	10.3	12.4	113.3	92.4	34.5
10	7.5	6	150	100LA	3000	23.9	28.6	14.0	16.8	113.3	93.1	39.8
15	11	6	150	132S	3000	35.0	42.0	20.4	24.4	113.3	93.8	44.6
20	15	6	150	132S	3000	47.7	57.3	27.6	33.1	113.3	94.3	50.1
25	18.5	6	150	132S	3000	58.9	70.7	33.9	40.7	113.3	94.7	54.2
30	22	6	150	160M	3000	70.0	84.0	40.3	48.3	113.3	94.9	83.3
40	30	6	150	160M	3000	95.5	114.6	54.7	65.6	113.3	95.3	102.8
50	37	6	150	160L	3000	117.8	141.3	67.1	80.6	113.3	95.7	119.5
60	45	6	150	160L	3000	143.2	171.9	81.5	97.8	113.3	95.9	133.2
75	55	8	200	180M	3000	175.1	210.1	99.4	119.3	116.7	96.1	144.6
100	75	8	200	180L	3000	238.7	286.5	135.1	162.1	116.7	96.4	180.3
125	90	8	200	200L	3000	286.5	343.8	162.0	194.4	116.7	96.5	255.9
150	110	8	200	225M	3000	350.1	420.2	198.1	237.8	116.7	96.4	357.9
175	132	8	200	250M	3000	420.2	504.2	237.5	285.0	116.7	96.5	384.0
215	160	8	200	250M	3000	509.3	611.2	287.6	345.1	116.7	96.6	421.4
250	185	8	200	250M	3000	588.9	706.6	331.5	397.8	116.7	96.9	477.6
270	200	8	200	280M	3000	636.6	763.9	358.4	430.1	116.7	96.9	660.4
335	250	8	200	280M	3000	795.8	954.9	448.0	537.6	116.7	96.9	757.8
375	280	8	200	315S	3000	891.3	1069.5	501.8	602.1	116.7	96.9	823.6
420	315	8	200	315M	3000	1002.7	1203.2	564.5	677.4	116.7	96.9	931.1
475	355	8	200	315M	3000	1130.0	1356.0	636.2	763.4	116.7	96.9	880.7
500	375	8	200	315L	3000	1193.7	1432.4	672.0	806.4	116.7	96.9	988.5
540	400	8	200	355M	3000	1273.2	1527.9	716.8	860.2	116.7	96.9	1714.0

NOTE :

1. Efficiency, speed and torque are the same for other voltages.

Current values and induced voltage constant vary inversely with voltage.

2.The above are typical values based on test according to GB/T 32877 2-3- A, GB30253-2024.

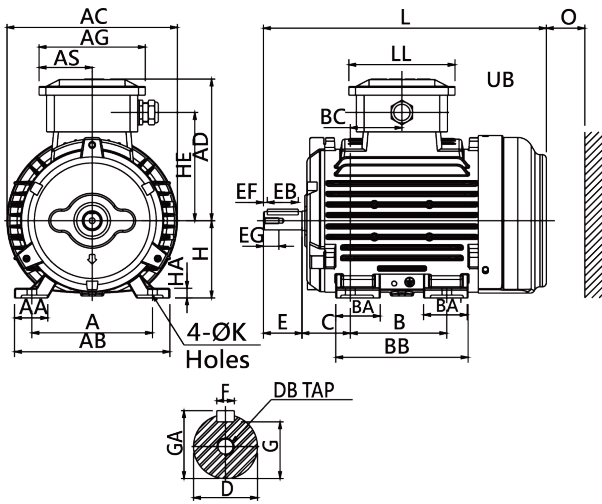


Fig .1

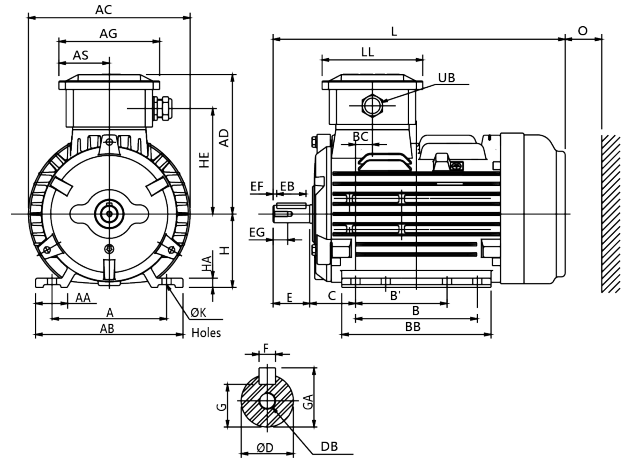


Fig .2

[Dimension in mm]

Output (kW)			FRAME SIZE	FIG NO.	A	AA	AB	AC	AD	AG	AS	B	B'	BA	BB	BC	C	H	HA
3000 rpm	1500 rpm	1000 rpm																	
0.75	1.5	0.75	80MA	FIG.1	125	34.5	161	177	151	111	55	100	-	46	46	137	50	80	10
-	2.2	-	80MB	FIG.2	125	34.5	161	177	151	111	55	133	100	-	-	163	50	80	10

FRAME SIZE	HE	K	LL	O	UB	SHAFT EXTENSION										BEARING	
						D	E	EB	EF	EG	F	G	GA	DB	DRIVE END	OPPOSITE DRIVE END	
80MA	115	10	111	40	M20X1.5	19	40	32	4	16	6	15.5	21.5	M6	6204ZZ	6203ZZ	
80MB	115	10	111	40	M20X1.5	19	40	32	4	16	6	15.5	21.5	M6	6204ZZ	6204ZZ	

NOTE :

1. Tolerance of shaft end diameter D : j6
2. Tolerance of shaft center high H : +0, -0.5
3. T-Box Assy with a cable grand body

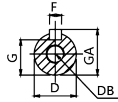
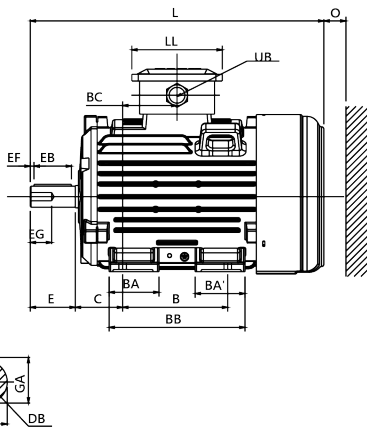
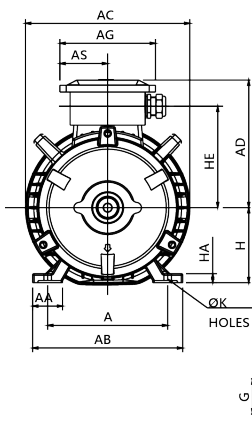


Fig .3

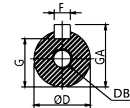
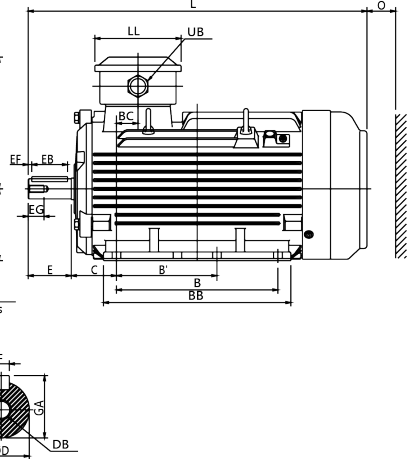
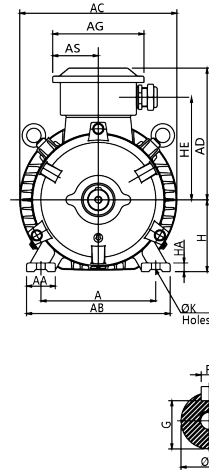


Fig .4

[Dimension in mm]

Output (kW)			FRAME SIZE	FIG NO.	A	AA	AB	AC	AD	AG	AS	B	B'	BA	BA'	BB	BC	C	H	HA	HE
3000 rpm	1500 rpm	1000 rpm																			
3.7	3.7	1.5	100LA	FIG.3	160	40	200	219	179.5	128	63.5	140	-	66.5	66.5	181	72.5	63	100	12	138
5.5	5.5	2.2																			
7.5	5.5	3.7																			
-	7.5	5.5	100LB	FIG.4	160	40	200	219	184.5	128	63.5	225	140	-	-	261	21	63	100	12	143

FRAME SIZE	K	L	LL	O	UB	SHAFT EXTENSION									BEARING	
						D	E	EB	EF	EG	F	G	GA	DB	DRIVE END	OPPOSITE DRIVE END
100LA	12	392	120	50	M25X1.5	28	60	50	5	22	8	24	31	M10	6206ZZ	6205ZZ
100LB	12	472	120	50	M25X1.5	28	60	50	5	22	8	24	31	M10	6206ZZ	6206ZZ

NOTE :

1. Tolerance of shaft end diameter D : j6
2. Tolerance of shaft center high H : +0, -0.5
3. T-Box Assy with a cable grand body

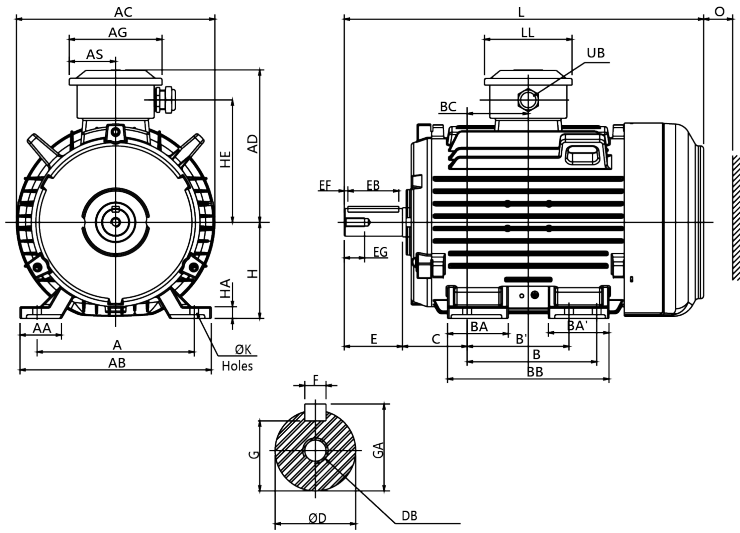


Fig. 5

[Dimension in mm]

Output (kW)			FRAME SIZE	FIG NO.	A	AA	AB	AC	AD	AG	AS	B	B'	BA	BA'	BB	BC	C	H	HA	HE
3000 rpm	1500 rpm	1000 rpm																			
11	15	18.5	132S	FIG.5	216	57	263	273	209.5	128	63.5	140	-	64	64	184	65	89	132	16	168
-	15	11	132M		216	57	263	273	209.5	128	63.5	178	140	83.5	83.5	222	84	89	132	16	168

FRAME SIZE	K	L	LL	O	UB	SHAFT EXTENSION									BEARING	
						D	E	EB	EF	EG	F	G	GA	DB	DRIVE END	OPPOSITE DRIVE END
100LA	12	456	120	50	M25X1.5	38	80	70	5	28	10	33	41	M12	6308ZZ	6306ZZ
100LB	12	494	120	50	M25X1.5	38	80	70	5	28	10	33	41	M12	6308ZZ	6306ZZ

NOTE :

1. Tolerance of shaft end diameter D : k6
2. Tolerance of shaft center high H : +0, -0.5
3. T-Box Assy with a cable grand body

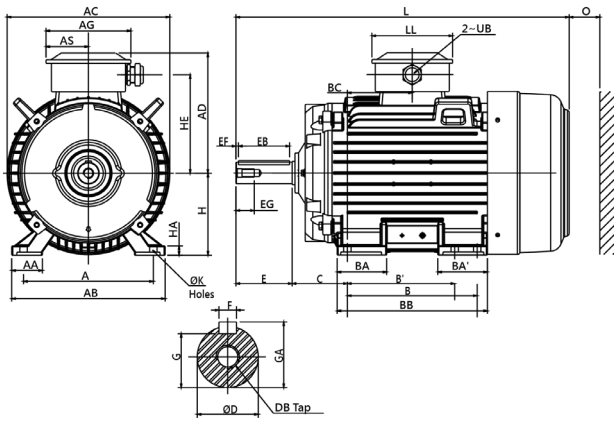


Fig.6

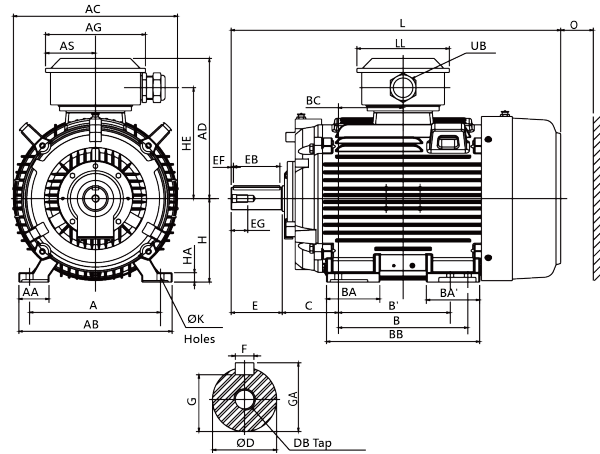


Fig.7

[Dimension in mm]

Output (kW)			FRAME SIZE	FIG NO.	A	AA	AB	AC	AD	AG	AS	B	B'	BA	BA'	BB	BC	C	H	HA	HE
3000 rpm	1500 rpm	1000 rpm																			
22	18.5	15	160M	FIG.6	254	60	300	316	241.5	166	83	210	-	57	57	250	105	108	160	18	14.5
30	22	18.5	160L		254	60	300	316	241.5	166	83	254	210	97	97	294	127	108	160	18	14.5
55	30	-	180M	FIG.7	279	65	330	354	298.5	215	107.5	241	-	65	65	292	120.5	121	180	20	14.5
75	37	30	180L		279	65	330	354	298.5	215	107.5	279	241	115	115	330	139.5	121	180	20	14.5

FRAME SIZE	K	L	LL	O	UB	SHAFT EXTENSION										BEARING	
						D	E	EB	EF	EG	F	G	GA	DB	DRIVE END	OPPOSITE DRIVE END	
160M	14.5	608	160	60	M32x1.5	42	110	100	5	36	12	37	45	M16	6309ZZ	6307ZZ	
160L	14.5	652	160	60	M32x1.5	42	110	100	5	36	12	37	45	M16			
180M	14.5	671	199	70	M50x1.5	48	110	100	5	36	14	42.5	51.5	M16	6311C3	6310C3	
180L	14.5	709	199	70	M50x1.5	48	110	100	5	36	14	42.5	51.5	M16			

NOTE :

1. Tolerance of shaft end diameter D(160M-180L) : k6
2. Tolerance of shaft center high H : +0, -0.5
3. T-Box Assy with a cable grand body

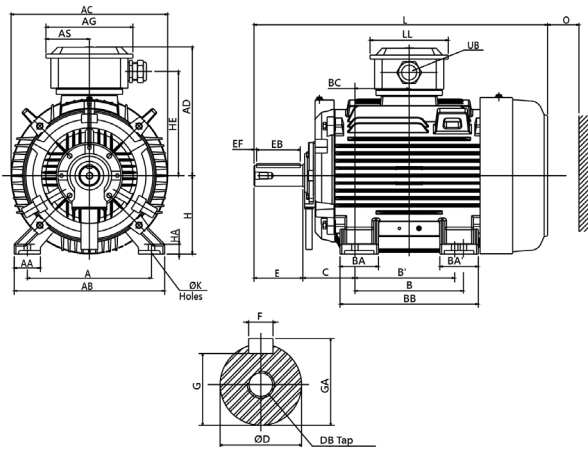


Fig.8

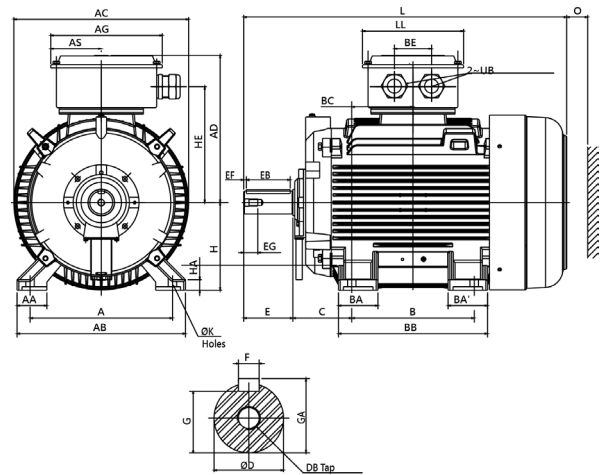


Fig.9

[Dimension in mm]

Output (kW)			FRAME SIZE	FIG NO.	A	AA	AB	AC	AD	AG	AS	B	B'	BA	BA'	BB	BC	C	H	HA	HE
3000 rpm	1500 rpm	1000 rpm																			
90	55	37	200L	FIG.8	318	70	378	398	340.5	248	124	305	-	82	82	353	152.5	133	200	24	270
-	75	-	225SB		356	75	431	448	366.5	248	124	286	-	98.5	98.5	371	143	149	225	28	296
110	-	-	225MA		356	75	431	448	366.5	248	124	311	286	110	110	396	155.5	149	225	28	296
-	-	45	225MB		356	75	431	448	366.5	248	124	311	286	110	110	396	155.5	149	225	28	296
132 160 185	-	-	250MA	FIG.9	406	85	480	498	419.5	318	144	349	-	112.5	112.5	425	174.5	168	250	30	330
-	90 110 132	55 75	250MB		406	85	480	498	419.5	318	144	349	-	112.5	112.5	425	174.5	168	250	30	330

框號	K	L	LL	BE	O	UB	SHAFT EXTENSION										BEARING	
							D	E	EB	EF	EG	F	G	GA	DB	DRIVE END	OPPOSITE DRIVE END	
200L	18.5	768	224	-	80	M63X1.5	55	110	100	5	42	16	49	59	M20	6312C3	6212C3	
225SB	18.5	815	224	-	90	M63X1.5	60	140	125	7.5	42	18	53	64	M20	6313C3	6213C3	
225MA	18.5	810	224	-	90	M63X1.5	55	110	100	5	42	16	49	59	M20	6312C3	6212C3	
225MB	18.5	840	224	-	90	M63X1.5	60	140	125	7.5	42	18	53	64	M20	6313C3	6213C3	
250MA	24	921	288	106	105	M63X1.5	60	140	125	7.5	42	18	53	64	M20	6313C3 6315C3	6313C3 6313C3	
250MB	24	921	288	106	105	M63X1.5	65	140	125	7.5	42	18	58	69	M20			

NOTE :

1. Tolerance of shaft end diameter D : m6
2. Tolerance of shaft center high H : +0, -0.5
3. T-Box Assy with a cable grand body (250M with two cable grand bodies)

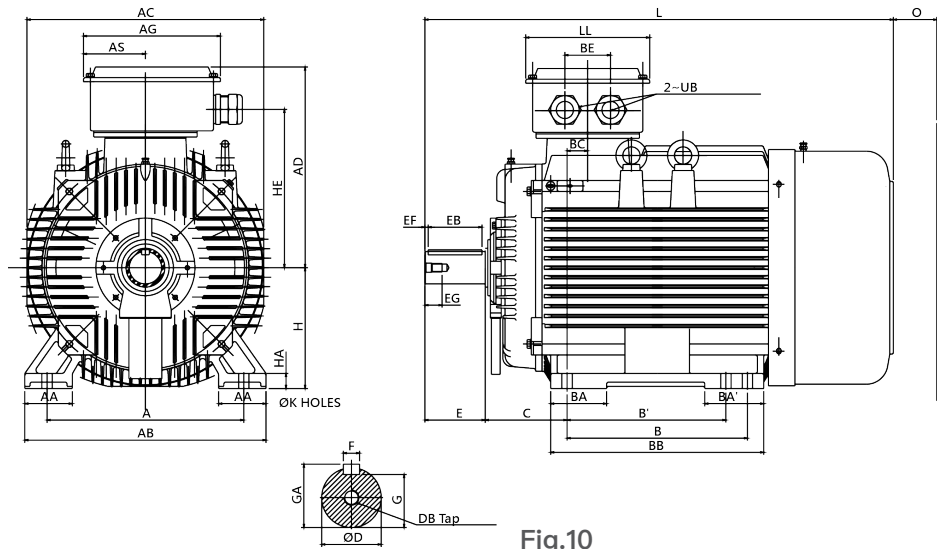


Fig.10

[Dimension in mm]

Output (kW)			FRAME SIZE	FIG NO.	A	AA	AB	AC	AD	AG	AS	B	B'	BA	BA'	BB	BC	BE	C	H	HA
3000 rpm	1500 rpm	1000 rpm			A	AA	AB	AC	AD	AG	AS	B	B'	BA	BA'	BB	BC	BE	C	H	HA
-	-	90	280SB	FIG.10	457	110	560	550	465	318	144	368	-	110	110	445	47.5	106	190	280	35
200	-	-	280MA		457	110	560	550	465	318	144	419	368	130	137	495	47.5	106	190	280	35
-	160	110	280MB		457	110	560	550	465	318	144	419	368	130	137	495	47.5	106	190	280	35

FRAME SIZE	HE	K	L	LL	O	UB	SHAFT EXTENSION										BEARING	
							D	E	EB	EF	EG	F	G	GA	DB	DRIVE END	OPPOSITE DRIVE END	
280SB	367	24	1037	288	140	M63X1.5	75	140	125	7.5	40	20	67.5	79.5	M20	6318C3	6316C3	
280MA	367	24	1087.5	288	140	M63X1.5	65	140	125	7.5	40	18	58	69	M20	6316C3	6314C3	
280MB	367	24	1087.5	288	140	M63X1.5	75	140	125	7.5	40	20	67.5	79.5	M20	6318C3	6316C3	

NOTE :

1. Tolerance of Shaft End Diameter D : m6
2. Tolerance of Shaft Center Height H : +0, -1
3. Tolerance of Key Width F : h9
4. T-Box Assy with two cable grand bodies.

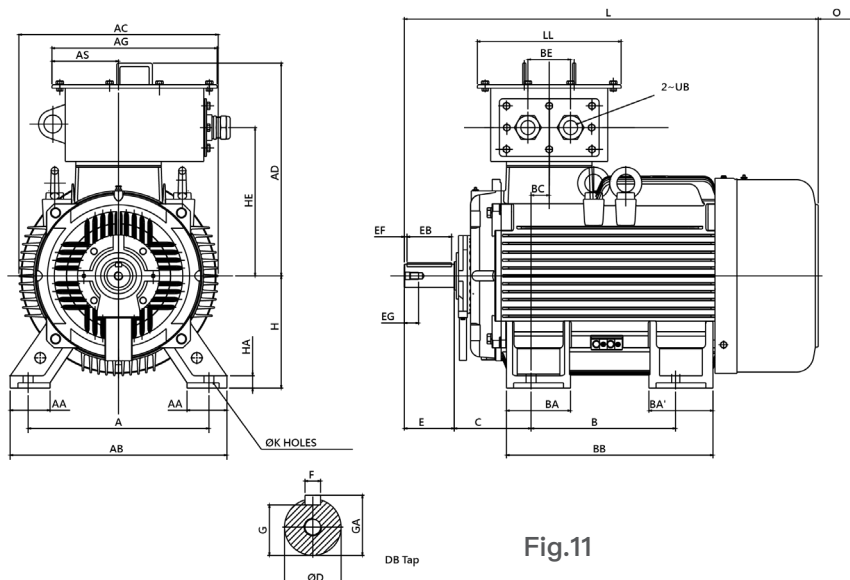


Fig.11

[Dimension in mm]

Output (kW)			FRAME SIZE	FIG NO.	A	AA	AB	AC	AD	AG	AS	B	BA	BA'	BB	BC	BE	C	H	HA	HE
3000 rpm	1500 rpm	1000 rpm																			
280	-	-	315SA	FIG.11	508	115	615	560	596.5	464	190	406	180	180	580	53	120	216	315	35	441
-	200	160	315SB		508	115	615	560	596.5	464	190	406	180	180	580	53	120	216	315	35	441

FRAME SIZE	K	L	LL	O	UB	SHAFT EXTENSION									BEARING	
						D	E	EB	EF	EG	F	G	GA	DB	DRIVE END	OPPOSITE DRIVE END
315SA	28	1162	404	180	M72X2	65	140	125	7.5	40	18	58	69	M20	6316C3	6314C3
315SB	28	1192	404	180	M72X2	80	170	160	5	40	22	71	85	M20	6320C3	6316C3

NOTE :

1. Tolerance of Shaft End Diameter D : m6
2. Tolerance of Shaft Center Height H : +0, -1
3. Tolerance of Key Width F : h9
4. T-Box Assy with two cable grand bodies.

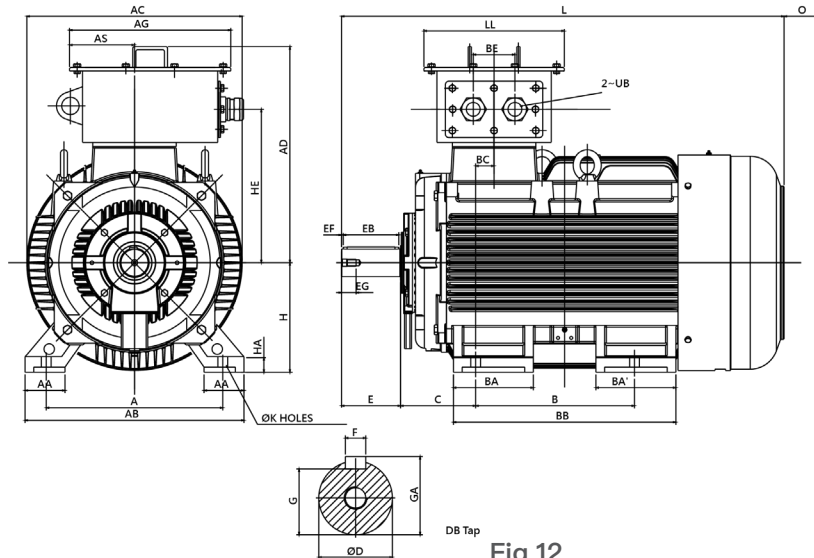


Fig.12

[Dimension in mm]

Output (kW)			FRAME SIZE	FIG NO.	A	AA	AB	AC	AD	AG	AS	B	B'	BA	BA'	BB	BC	C	H	HA	HE
3000 rpm	1500 rpm	1000 rpm																			
315	-	-	315MA	FIG.12	508	130	630	620	621.5	464	190	457	230	230	640	53	120	216	315	45	441
-	250	185	315MB		508	130	630	620	621.5	464	190	457	230	230	640	53	120	216	315	45	441

FRAME SIZE	K	L	LL	O	UB	SHAFT EXTENSION										BEARING	
						D	E	EB	EF	EG	F	G	GA	DB	DRIVE END	OPPOSITE DRIVE END	
315MA	28	1246	404	180	M72X2	65	140	125	7.5	40	18	58	69	M20	6316C3	6314C3	
315MB	28	1276	404	180	M72X2	80	170	160	5	40	22	71	85	M20	6320C3	6316C3	

NOTE :

1. Tolerance of Shaft End Diameter D : m6
2. Tolerance of Shaft Center Height H : +0, -1
3. Tolerance of Key Width F : h9
4. T-Box Assy with two cable grand bodies

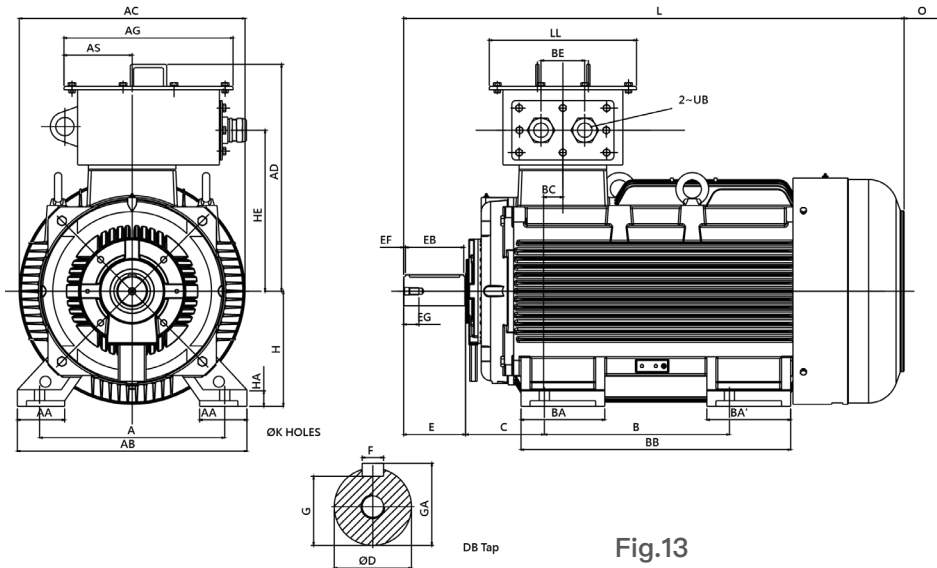


Fig.13

[Dimension in mm]

輸出 (kW)			框號	圖號	A	AA	AB	AC	AD	AG	AS	B	BA	BA'	BB	BC	BE	C	H	HA	HE
3000 rpm	1500 rpm	1000 rpm																			
375	-	-	315LA	FIG.13	508	130	630	620	621.5	464	190	508	230	230	740	53	120	216	315	45	441
-	355	250	315LB		508	130	630	620	621.5	464	190	508	230	230	740	53	120	216	315	45	441

FRAME SIZE	K	L	LL	O	UB	SHAFT EXTENSION										BEARING	
						D	E	EB	EF	EG	F	G	GA	DB	DRIVE END	OPPOSITE DRIVE END	
315LA	28	1346	404	180	M72X2	65	140	125	7.5	40	18	58	69	M20	6316C3	6314C3	
315LB	28	1376	404	180	M72X2	80	170	160	5	40	22	71	85	M20	6320C3	6316C3	

NOTE :

1. Tolerance of Shaft End Diameter D : m6
2. Tolerance of Shaft Center Height H : +0, -1
3. Tolerance of Key Width F : h9
4. T-Box Assy with two cable grand bodies

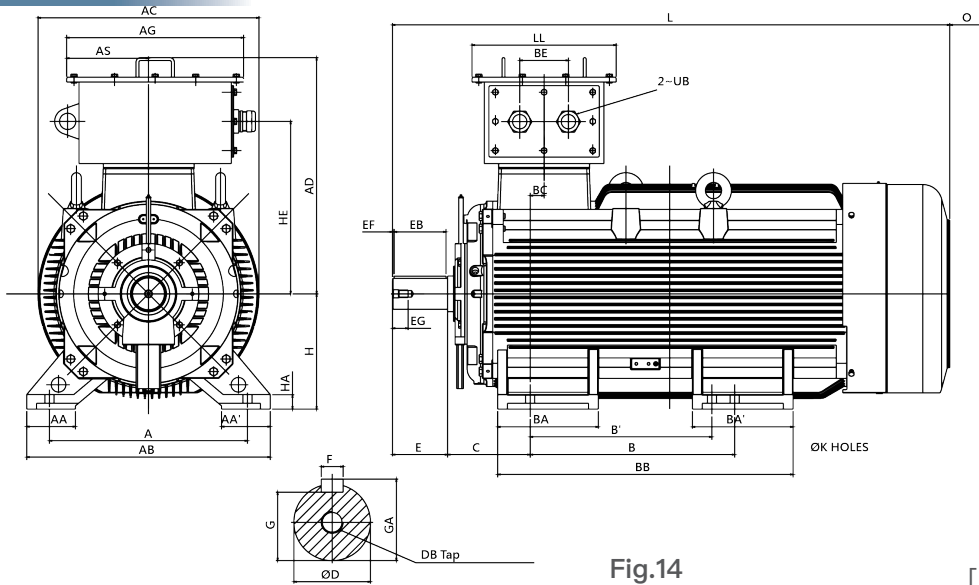


Fig.14

[Dimension in mm]

Output (kW)			FRAME SIZE	FIG NO.	A	AA	AB	AC	AD	AG	AS	B	B'	BA	BA'	BB	BC	BE	C	H	HA	HE
3000 rpm	1500 rpm	1000 rpm																				
400	-	-	355MA	FIG.14	610	150	750	682	850	655	268	630	560	310	310	910	43	160	254	355	45	591
-	375	280 315	355MB		610	150	750	682	727	545	252	630	560	310	310	910	43	150	254	355	45	531

FRAME SIZE	K	L	LL	O	UB	SHAFT EXTENSION										BEARING	
						D	E	EB	EF	EG	F	G	GA	DB	DRIVE END	OPPOSITE DRIVE END	
355MA	28	1687	444	230	M72X2	75	140	125	7.5	40	20	67.5	79.5	M20	6317C3	6317C3	
355MB	28	1717	444	230	M72X2	95	170	160	5	48	25	86	100	M24	6322C3	6322C3	

NOTE :

1. Tolerance of Shaft End Diameter D : m6
2. Tolerance of Shaft Center Height H : +0, -1
3. Tolerance of Key Width F : h9
4. T-Box Assy with two cable grand bodies

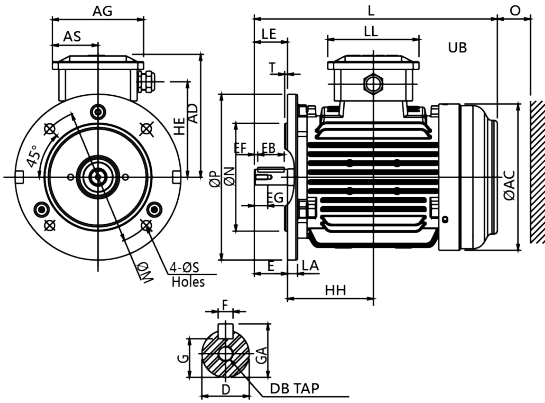


Fig.1

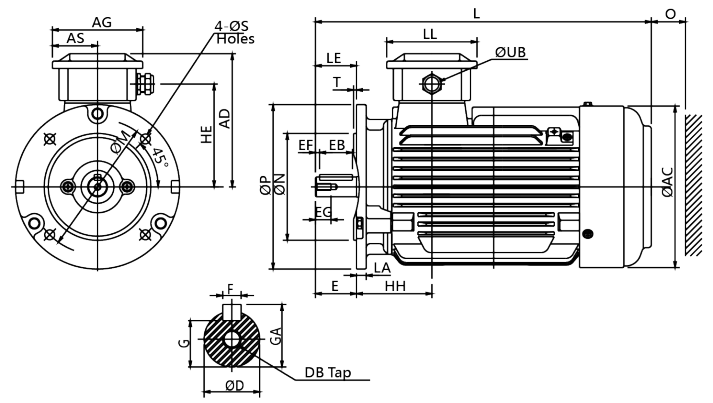


Fig.2

[Dimension in mm]

Output (kW)			FRAME SIZE	FIG NO.	FLANGE DIMENSION							AC	AD	AG	AS	HE	HH	L
3000 rpm	1500 rpm	1000 rpm			LA	LE	M	N	P	S	T							
0.75 1.5 2.2	0.75 1.5	0.75	80MA	FIG.1	12	40	165	130	200	12	3.5	177	151	111	55	115	103.5	293
-	2.2	-	80MB	FIG.2													68.5	319

FRAME SIZE	LL	O	UB	SHAFT EXTENSION									BEARING	
				D	E	EB	EF	EG	F	G	GA	DB	DRIVE END	OPPOSITE DRIVE END
80MA	111	40	M20X1.5	19	40	32	4	16	6	15.5	21.5	M6	6204ZZ	6203ZZ
80MB	111	40	M20X1.5	19	40	32	4	16	6	15.5	21.5	M6	6204ZZ	6204ZZ

NOTE :

1. Tolerance of shaft end diameter D : j6
2. Tolerance of N : j6
3. T-Box Assy with a cable grand body

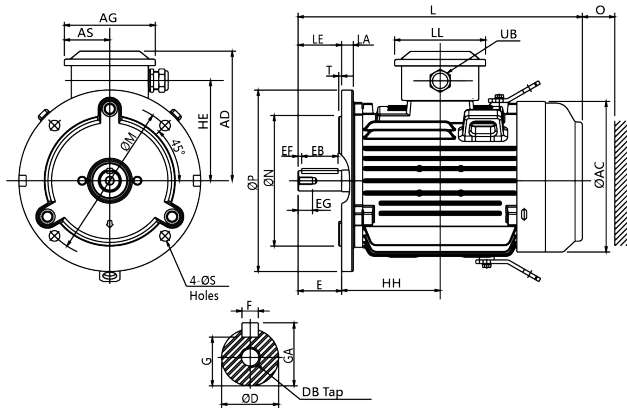


Fig.3

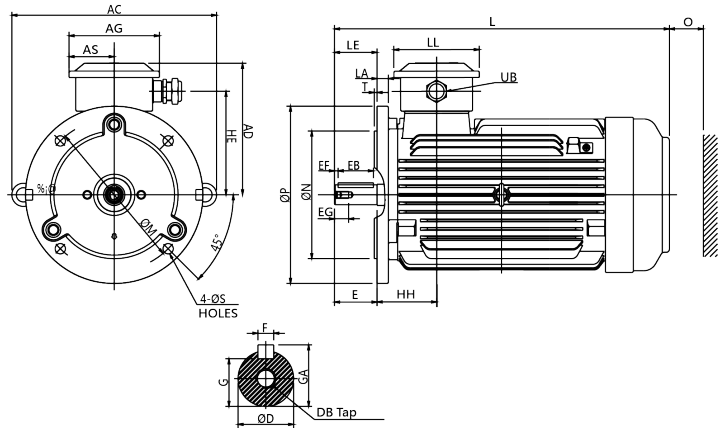


Fig.4

[Dimension in mm]

Output (kW)			FRAME SIZE	FIG NO.	FLANGE DIMENSION							A	AA	AB	AC	AD	AG	AS	B	B'	BA	BA'	BB	BC	C	H
3000 rpm	1500 rpm	1000 rpm			LA	LE	M	N	P	S	T															
3.7 5.5 7.5	3.7 5.5	1.5 2.2 3.7	100LA	FIG.3								179.5		138	135.5	63.5	140	-	66.5	66.5	181	72.5	63	100		
					16	60	215	180	250	14.5	4	219		128	63.5											
-	7.5	5.5	100LB	FIG.4								184.5		143	84	63.5	225	140	-	-	261	21	63	100		

FRAME SIZE	HA	HE	K	L	LL	O	UB	SHAFT EXTENSION									BEARING	
								D	E	EB	EF	EG	F	G	GA	DB	DRIVE END	OPPOSITE DRIVE END
100LA	12	138	12	392	120	50	M25X1.5	28	60	50	5	22	8	24	31	M10	6206ZZ	6205ZZ
100LB	12	143	12	472	120	50	M25X1.5	28	60	50	5	22	8	24	31	M10	6206ZZ	6206ZZ

NOTE :

1. Tolerance of shaft end diameter D : j6
2. Tolerance of N : j6
3. T-Box Assy with a cable grand body

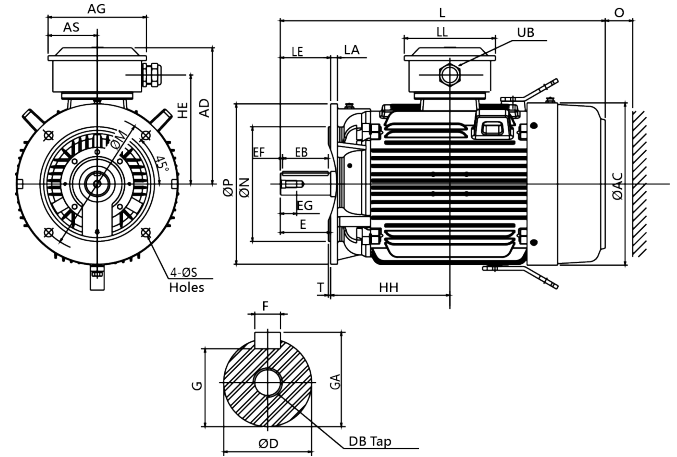
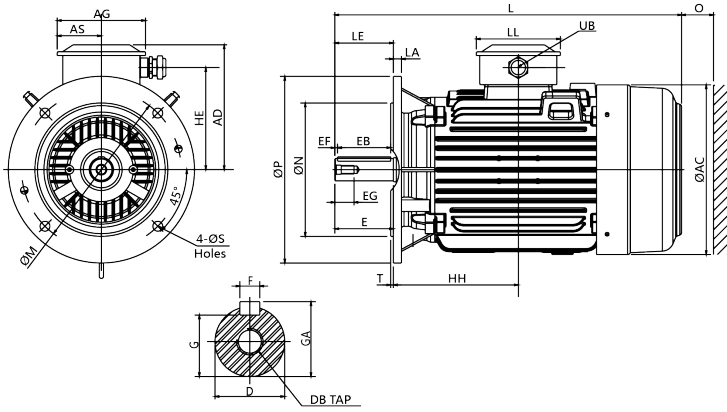


Fig.6

Fig.7

[Dimension in mm]

Output (kW)			FRAME SIZE	FIG NO.	FLANGE DIMENSION							AC	AD	AG	AS	HE	HH	L	LL	O
3000 rpm	1500 rpm	1000 rpm			LA	LE	M	N	P	S	T									
22	18.5	15	160M	FIG.6	15	110	300	250	350	18.5	5	316	241.5	166	83	192	213	608	160	60
30	22	18.5																		
37	-	22	160L		15	110	300	250	350	18.5	5	316	241.5	166	83	192	235	652	160	60
55	30	-	180M	FIG.7	15	110	300	250	350	18.5	5	354	298.5	215	107.5	238	241.5	671	199	70
75	37	30	180L																	
45	45	45	200L																	
90	55	37	200L		17	110	350	300	400	18.5	5	398	340.5	248	124	270	285.5	768	224	80

FRAME SIZE	UB	SHAFT EXTENSION									BEARING	
		D	E	EB	EF	EG	F	G	GA	DB	DRIVE END	OPPOSITE DRIVE END
160M	M32X1.5	42	110	100	5	36	12	37	45	M16	6309ZZ	6307ZZ
160L	M32X1.5	42	110	100	5	36	12	37	45	M16		
180M	M50X1.5	48	110	100	5	36	14	42.5	51.5	M16	6311C3	6310C3
180L	M50X1.5	48	110	100	5	36	14	42.5	51.5	M16		
200L	M63X1.5	55	110	100	5	36	16	49	59	M20	6312C3	6212C3

NOTE :

1. Tolerance of shaft end diameter D : a) $\phi 42 \sim \phi 48 : k6$; b) $\phi 55 : m6$.
2. Tolerance of N : j6
3. T-Box Assy with a cable grand body.

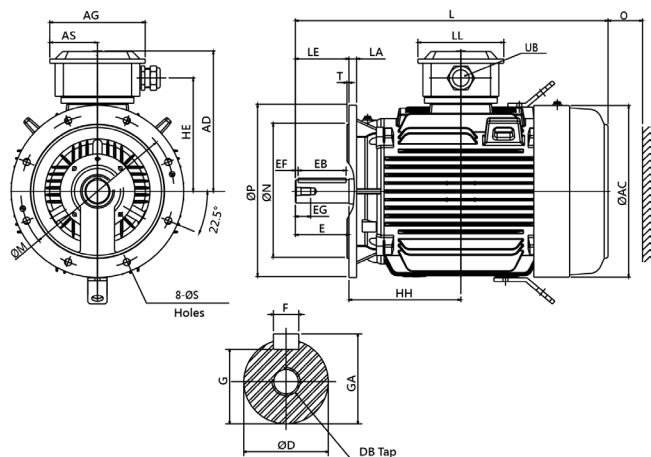


Fig.8

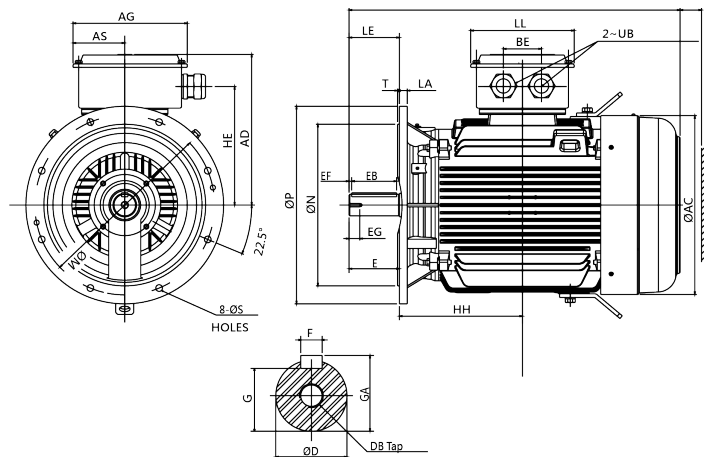


Fig.9

[Dimension in mm]

Output (kW)			FRAME SIZE	FIG NO.	FLANGE DIMENSION							AC	AD	AG	AS	HE	HH	L
3000 rpm	1500 rpm	1000 rpm			LA	LE	M	N	P	S	T							
-	75	-	225SB	FIG.8	20	140	400	350	450	18.5	5	448	366.5	248	124	296	292	815
110	-	-	225MA		20	110	400	350	450	18.5	5	448	366.5	248	124	296	304.5	810
-	-	45	225MB		20	140	400	350	450	18.5	5	448	366.5	248	124	296	304.5	840
132	-	-	250MA	FIG.9	22	140	500	450	550	18.5	5	498	419.5	318	144	330	342.5	921
-	90 110 132	55 75	250MB		22	140	500	450	550	18.5	5	498	419.5	318	144	330	342.5	921

FRAME SIZE	LL	BE	O	UB	SHAFT EXTENSION									BEARING	
					D	E	EB	EF	EG	F	G	GA	DB	DRIVE END	OPPOSITE DRIVE END
225SB	224	-	90	M63X1.5	60	140	125	7.5	42	18	53	64	M20	6313C3	6213C3
225MA	224	-	90	M63X1.5	55	110	100	5	42	16	49	59	M20	6312C3	6212C3
225MB	224	-	90	M63X1.5	60	140	125	7.5	42	18	53	64	M20	6313C3	6213C3
250MA	288	106	105	M63X1.5	60	140	125	7.5	42	18	53	64	M20	6313C3	6313C3
250MB	288	106	105	M63X1.5	65	140	125	7.5	42	18	58	69	M20	6315C3	6313C3

NOTE :

1. Tolerance of shaft end diameter D : m6.
2. Tolerance of N : j6.
3. T-Box Assy with a cable grand body.
4. T-Box Assy with a cable grand body. (250M with two cable grand bodies)

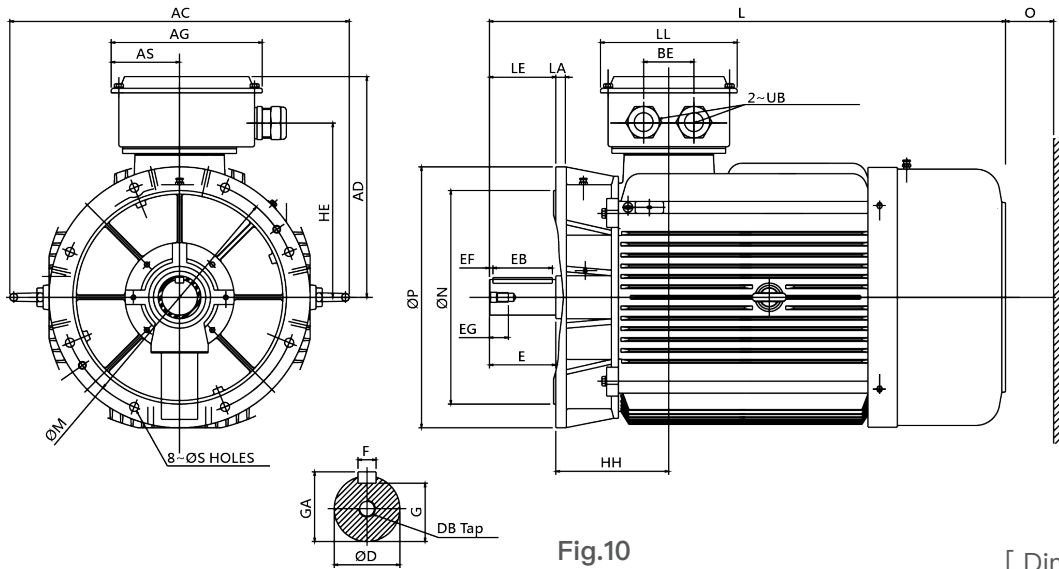


Fig.10

[Dimension in mm]

Output (kW)			FRAME SIZE	FIG NO.	FLANGE DIMENSION							AC	AD	AG	AS	HE	HH	BE	L
3000 rpm	1500 rpm	1000 rpm			LA	LE	M	N	P	S	T								
1037-	-	90	280SB	FIG.10	22	140	500	450	550	18.5	5	717	465	318	144	367	238	106	1037
200 250	-	-	280MA		22	140	500	450	550	18.5	5	717	465	318	144	367	238	106	1087.5
-	160 180	110 132	280MB		22	140	500	450	550	18.5	5	717	465	318	144	367	238	106	1087.5

FRAME SIZE	LL	O	UB	SHAFT EXTENSION									BEARING	
				D	E	EB	EF	EG	F	G	GA	DB	DRIVE END	OPPOSITE DRIVE END
280SB	288	140	M63X1.5	75	140	125	7.5	40	20	67.5	79.5	M20	6318C3	6316C3
280MA	288	140	M63X1.5	65	140	125	7.5	40	18	58	69	M20	6316C3	6314C3
280MB	288	140	M63X1.5	75	140	125	7.5	40	20	67.5	79.5	M20	6318C3	6316C3

NOTE :

1. Tolerance of Shaft End Diameter D : m6
2. Tolerance of Key Width F : h9
3. Tolerance of N : j6
4. T-Box Assy with two cable grand bodies.

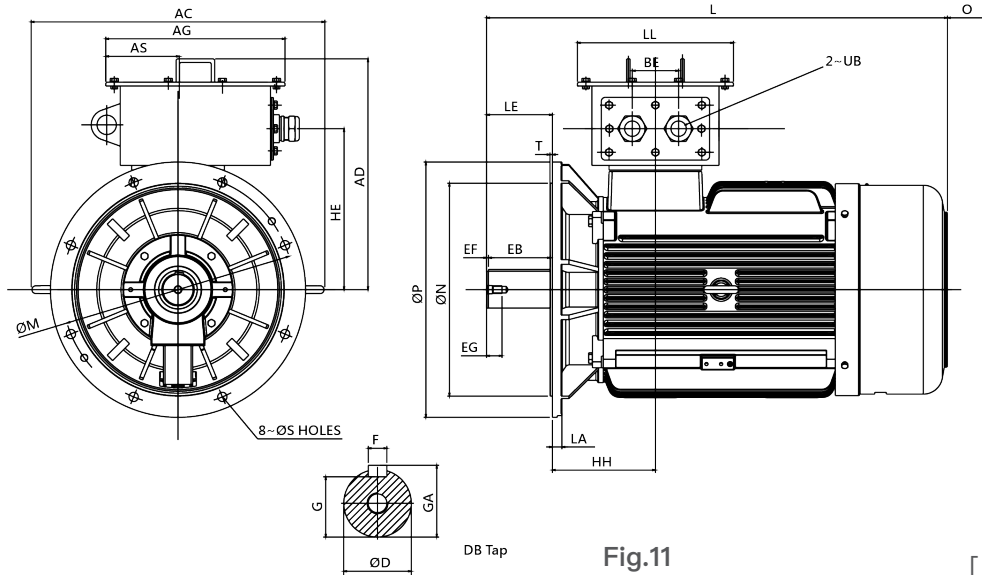


Fig.11

[Dimension in mm]

Output (kW)			FRAME SIZE	FIG NO.	FLANGE DIMENSION							AC	AD	AG	AS	BE	HE	HH	L
3000 rpm	1500 rpm	1000 rpm			LA	LE	M	N	P	S	T								
280	-	-	315SA	FIG.11	25	140	600	550	660	24	6	715	596.5	464	190	120	441	269	1162
-	200	160	315SB		25	170	600	550	660	24	6	715	596.5	464	190	120	441	269	1192

FRAME SIZE	LL	O	UB	SHAFT EXTENSION									BEARING	
				D	E	EB	EF	EG	F	G	GA	DB	DRIVE END	OPPOSITE DRIVE END
315SA	404	180	M72X2	65	140	125	7.5	40	18	58	69	M20	6316C3	6314C3
315SB	404	180	M72X2	80	170	160	5	40	22	71	85	M20	6320C3	6316C3

NOTE :

1. Tolerance of Shaft End Diameter D : m6
2. Tolerance of Key Width F : h9
3. Tolerance of N : js6
4. T-Box Assy with two cable grand bodies.

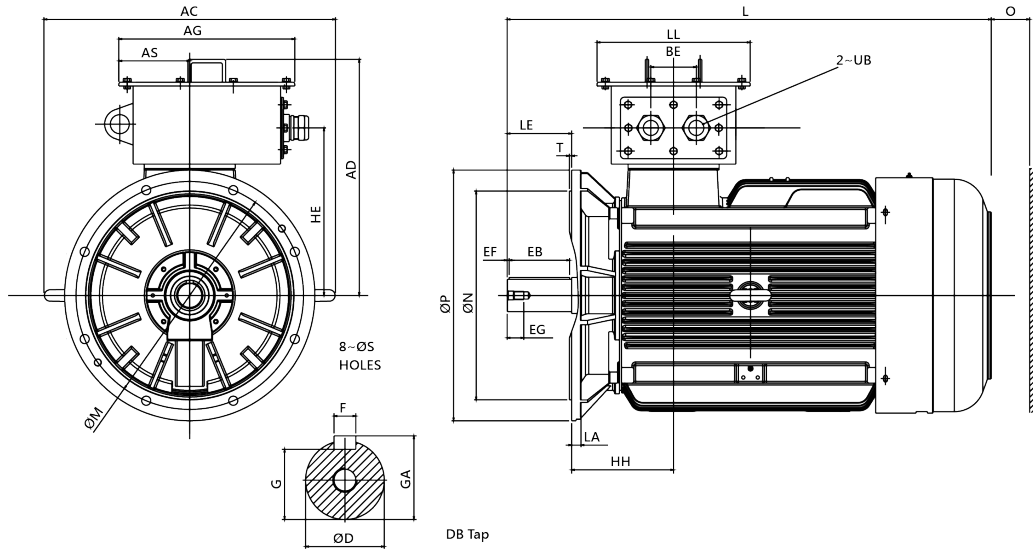


Fig.12

[Dimension in mm]

Output (kW)			FRAME SIZE	FIG NO.	FLANGE DIMENSION							AC	AD	AG	AS	BE	HE	HH	L
3000 rpm	1500 rpm	1000 rpm			LA	LE	M	N	P	S	T								
315	-	-	315MA	FIG.12	25	140	600	550	660	24	6	810	621.5	464	190	120	441	269	1246
-	250	-	315MB		25	170	600	550	660	24	6	810	621.5	464	190	120	441	269	1276

FRAME SIZE	LL	O	UB	SHAFT EXTENSION									BEARING	
				D	E	EB	EF	EG	F	G	GA	DB	DRIVE END	OPPOSITE DRIVE END
315MA	404	180	M72X2	65	140	125	7.5	40	18	58	69	M20	6316C3	6314C3
315MB	404	180	M72X2	80	170	160	5	40	22	71	85	M20	6320C3	6316C3

NOTE :

1. Tolerance of Shaft End Diameter D : m6
2. Tolerance of Key Width F : h9
3. Tolerance of N : js6
4. T-Box Assy with two cable grand bodies.

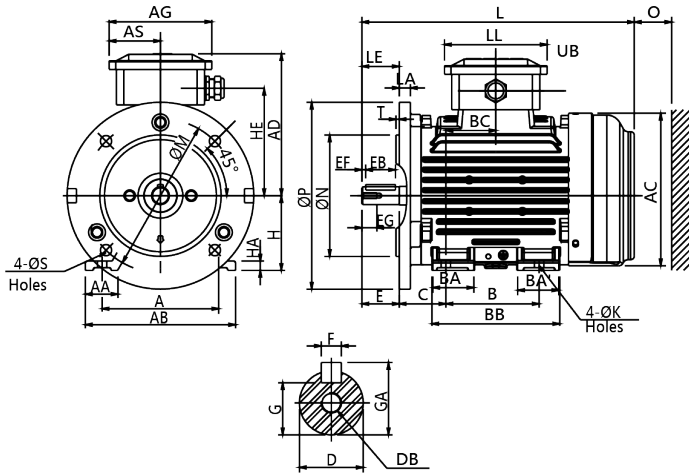


Fig.1

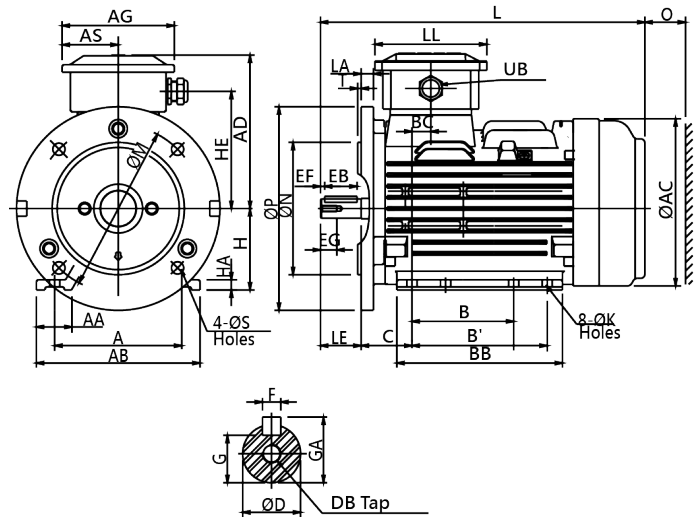


Fig.2

[Dimension in mm]

Output (kW)			FRAME SIZE	FIG NO.	FLANGE DIMENSION							A	AA	AB	AC	AD	AG	AS	B	B'	BA	BA'	BB	BC	C	H
3000 rpm	1500 rpm	1000 rpm			LA	LE	M	N	P	S	T															
0.75 1.5 2.2	0.75 1.5	0.75	80MA	FIG.1	12	40	165	130	200	12	3.5	125	34.5	161	177	151	111	55	100	-	46	46	137	53.5	50	80
-	2.2	-	80MB	FIG.2	12	40	165	130	200	12	3.5	125	34.5	161	177	151	111	55	100	133	-	-	163	18.5	50	80

FRAME SIZE	HA	HE	K	L	LL	O	UB	SHAFT EXTENSION							BEARING			
								D	E	EB	EF	EG	F	G	GA	DB	DRIVE END	OPPOSITE DRIVE END
80MA	10	115	10	293	111	40	M20X1.5	19	40	32	4	16	6	15.5	21.5	M6	6204ZZ	6203ZZ
80MB	10	115	10	319	111	40	M20X1.5	19	40	32	4	16	6	15.5	21.5	M6	6204ZZ	6204ZZ

NOTE :

1. Tolerance of shaft end diameter D : j6.
2. Tolerance of shaft center high H : +0, -0.5.
3. Tolerance of N : j6.
4. T-Box Assy with a cable grand body.

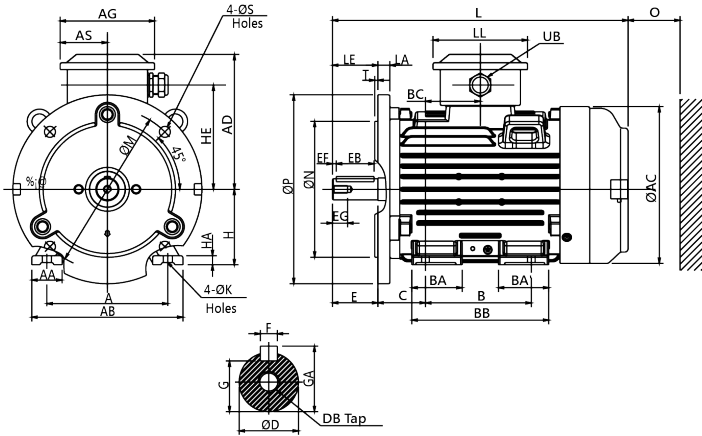


Fig.3

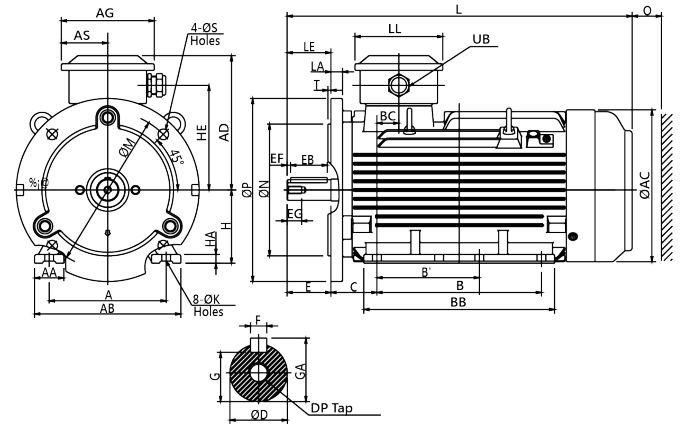


Fig.4

[Dimension in mm]

Output (kW)			FRAME SIZE	FIG NO.	FLANGE DIMENSION								A	AA	AB	AC	AD	AG	AS	B	B'	BA	BA'	BB	BC	C	H
3000 rpm	1500 rpm	1000 rpm			LA	LE	M	N	P	S	T																
3.7 5.5 7.5	3.7 5.5	1.5 2.2 3.7	100LA	FIG.3	16	60	215	180	250	14.5	4	160	40	200	219	179.5	128	63.5	140	-	66.5	66.5	181	72.5	63	100	
-	7.5	5.5	100LB	FIG.4	16	60	215	180	250	14.5	4	160	40	200	219	184.5	128	63.5	225	140	-	-	261	21	63	100	

框號	HA	HE	K	L	LL	O	UB	SHAFT EXTENSION								BEARING		
								D	E	EB	EF	EG	F	G	GA	DB	DRIVE END	OPPOSITE DRIVE END
100LA	12	138	12	392	120	50	M25X1.5	28	60	50	5	22	8	24	31	M10	6206ZZ	6205ZZ
100LB	12	143	12	472	120	50	M25X1.5	28	60	50	5	22	8	24	31	M10	6206ZZ	6206ZZ

NOTE :

1. Tolerance of shaft end diameter D : j6.
2. Tolerance of shaft center high H : +0, -0.5.
3. Tolerance of N : j6.
4. T-Box Assy with a cable grand body.

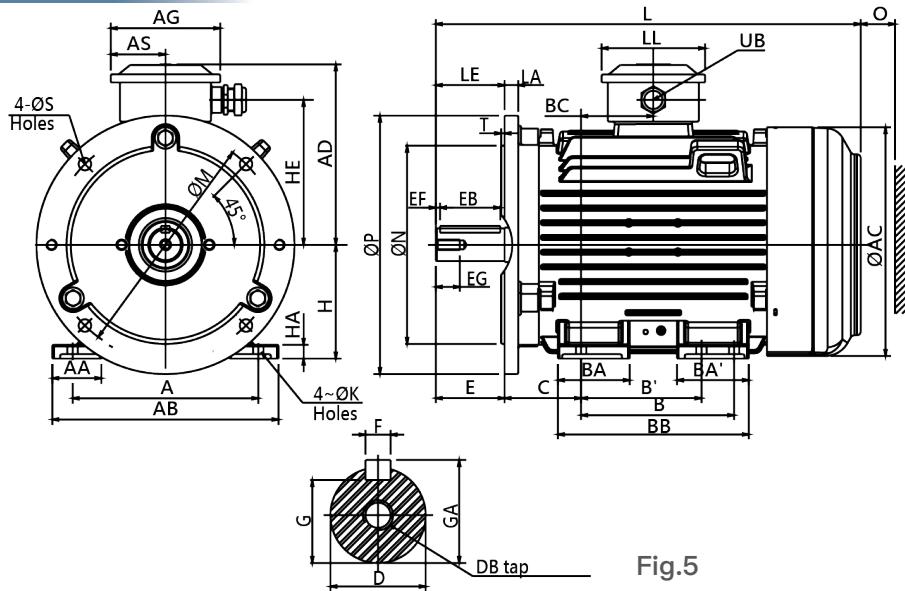


Fig.5

[Dimension in mm]

Output (kW)			FRAME SIZE	FIG NO.	FLANGE DIMENSION								A	AA	AB	AC	AD	AG	AS	B	B'	BA	BA'	BB	BC	C
3000 rpm	1500 rpm	1000 rpm			LA	LE	M	N	P	S	T															
11 15 18.5	11	7.5	132S	FIG.5	16	80	265	230	300	14.5	4	216	57	263	273	209.5	128	63.5	140	-	64	64	184	65	89	
-	15	11	132M		16	80	265	230	300	14.5	4	216	57	263	273	209.5	128	63.5	178	140	83.5	83.5	222	84	89	

框號	H	HA	HE	K	L	LL	O	UB	SHAFT EXTENSION								BEARING		
									D	E	EB	EF	EG	F	G	GA	DB	DRIVE END	OPPOSITE DRIVE END
132S	132	16	168	12	456	120	50	M25X1.5	38	80	70	5	28	10	33	41	M12	6308ZZ	6306ZZ
132M	132	16	168	12	494	120	50	M25X1.5	38	80	70	5	28	10	33	41	M12	6308ZZ	6306ZZ

NOTE :

1. Tolerance of shaft end diameter D : j6.
2. Tolerance of shaft center high H : +0, -0.5.
3. Tolerance of N : j6.
4. T-Box Assy with a cable grand body.

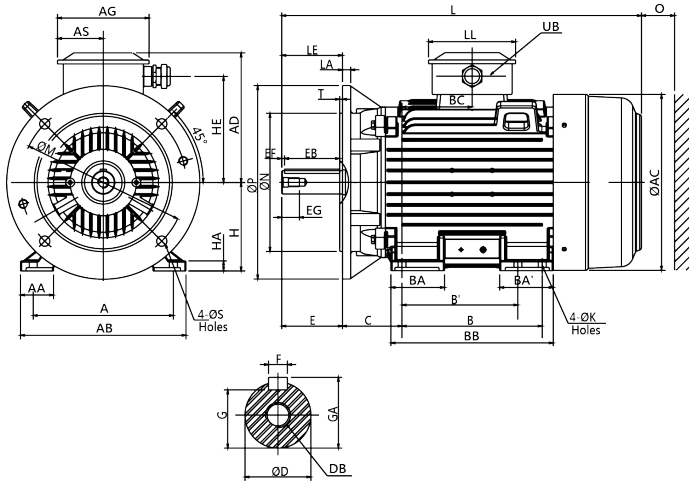


Fig.6

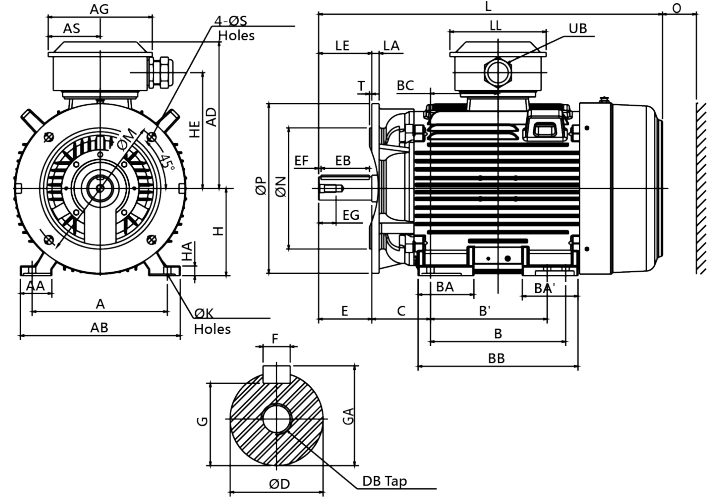


Fig.7

[Dimension in mm]

Output (kW)			FRAME SIZE	FIG NO.	FLANGE DIMENSION							A	AA	AB	AC	AD	AG	AS	B	B'	BA	BA'	BB
3000 rpm	1500 rpm	1000 rpm			LA	LE	M	N	P	S	T												
22 30	18.5 22	15 18.5	160M	FIG.6	15	110	300	250	350	18.5	5	254	60	300	316	241.5	166	83	210	-	57	57	250
37 45	-	22	160L		15	110	300	250	350	18.5	5	254	60	300	316	241.5	166	83	254	210	97	97	294
55	30	-	180M	FIG.7	15	110	300	250	350	18.5	5	279	65	330	354	298.5	215	107.5	241	-	65	65	292
75	37 45	30	180L		15	110	300	250	350	18.5	5	279	65	330	354	298.5	215	107.5	279	241	115	115	330
90	55	37	200L		17	110	300	300	400	18.5	5	318	70	378	398	340.5	248	124	305	-	82	82	353

FRAME SIZE	BC	C	H	HA	HE	K	L	LL	O	UB	SHAFT EXTENSION								BEARING		
											D	E	EB	EF	EG	F	G	GA	DB	DRIVE END	OPPOSITE DRIVE END
160M	105	108	160	18	192	14.5	608	160	60	M32X1.5	42	110	100	5	36	12	37	45	M16	6309ZZ	6307ZZ
160L	127	108	160	18	192	14.5	652	160	60	M32X1.5	42	110	100	5	36	12	37	45	M16		
180M	120.5	121	180	20	238	14.5	671	199	70	M50X1.5	48	110	100	5	36	14	42.5	51.5	M16	6311C3	6310C3
180L	139.5	121	180	20	238	14.5	709	199	70	M50X1.5	48	110	100	5	36	14	42.5	51.5	M16		
200L	152.5	200	200	24	270	18.5	768	224	80	M63X1.5	55	110	100	5	42	16	49	59	M20	6312C3	6212C3

NOTE :

1. Tolerance of shaft end diameter D : a) . ϕ 42 ~ ϕ 48 : k6 ; b) . ϕ 55 : m6.
2. Tolerance of shaft center high H : +0, -0.5.
3. Tolerance of N : j6.
4. T-Box Assy with a cable grand body.

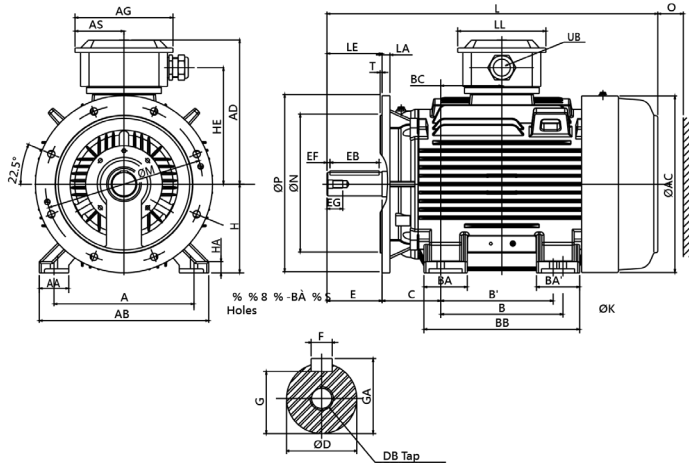


Fig.8

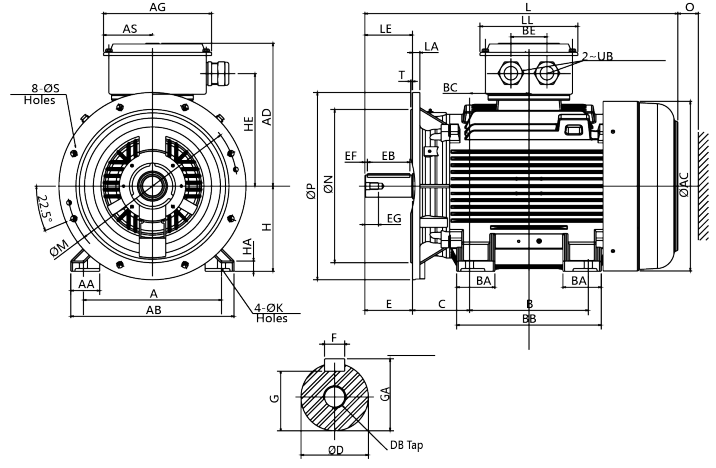


Fig.9

[Dimension in mm]

Output (kW)			FRAME SIZE	FIG NO.	FLANGE DIMENSION						A	AA	AB	AC	AD	AG	AS	B	B'	BA	BA'	BB	
3000 rpm	1500 rpm	1000 rpm			LA	LE	M	N	P	S													T
-	75	-	225SB	FIG.8	20	140	400	350	450	18.5	5	356	75	431	448	366.5	248	124	286	-	98.5	98.5	371
110	-	-	225MA		20	110	400	350	450	18.5	5	356	75	431	448	366.5	248	124	311	286	110	110	396
-	-	45	225MB	FIG.9	20	140	400	350	450	18.5	5	356	75	431	448	366.5	248	124	311	286	110	110	396
132	160	185	250MA		22	140	500	450	550	18.5	5	406	85	480	498	419.5	318	144	349	-	112.5	112.5	425
-	90	110	250MB		22	140	500	450	550	18.5	5	406	85	480	498	419.5	318	144	349	-	112.5	112.5	425

FRAME SIZE	BC	C	H	HA	HE	K	L	LL	BE	O	UB	SHAFT EXTENSION								BEARING		
												D	E	EB	EF	EG	F	G	GA	DB	DRIVE END	OPPOSITE DRIVE END
225SB	143	149	225	28	296	18.5	815	224	-	90	M63X1.5	60	140	125	7.5	42	18	53	64	M20	6313C3	6213C3
225MA	155.5	149	225	28	296	18.5	810	224	-	90	M63X1.5	55	110	100	5	42	16	49	59	M20	6312C3	6212C3
225MB	155.5	149	225	28	296	18.5	840	224	-	90	M63X1.5	60	140	125	7.5	42	18	53	64	M20	6313C3	6213C3
250MA	174.5	168	250	30	330	24	921	288	106	105	M63X1.5	60	140	125	7.5	42	18	53	64	M20	6313C3	6313C3
250MB	174.5	168	250	30	330	24	921	288	106	105	M63X1.5	65	140	125	7.5	42	18	58	69	M20	6315C3	6313C3

NOTE :

1. Tolerance of shaft end diameter D : m6.
2. Tolerance of shaft center high H : +0, -0.5.
3. Tolerance of N : j6.
4. T-Box Assy with a cable grand body (250M with two cable grand bodies)

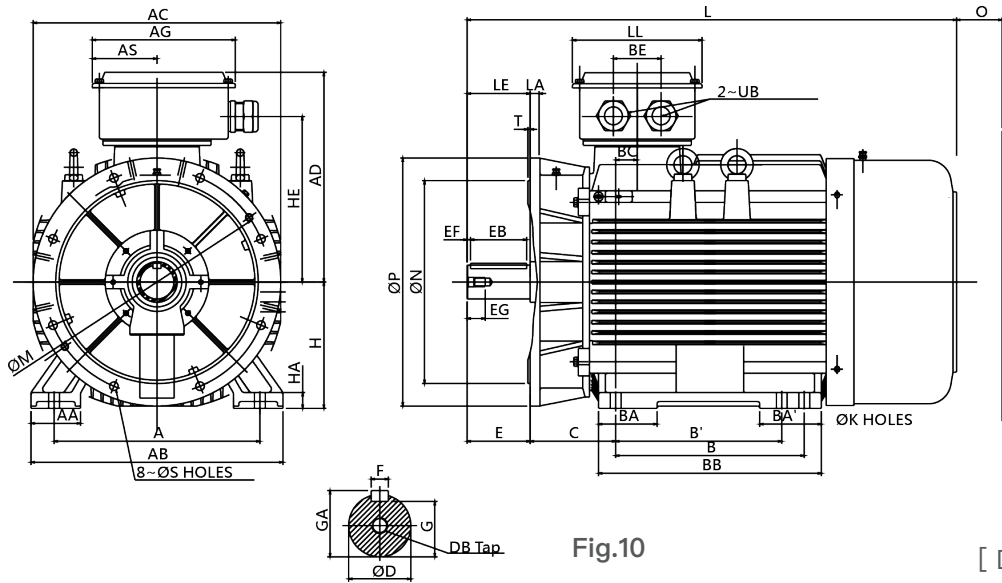


Fig.10

[Dimension in mm]

Output (kW)			FRAME SIZE	FIG NO.	FLANGE DIMENSION							A	AA	AB	AC	AD	AG	AS	B	B'	BA	BA'	BB	BC	BE
3000 rpm	1500 rpm	1000 rpm			LA	LE	M	N	P	S	T														
-	-	90	280SB	FIG.10	22	140	500	450	550	18.5	5	457	110	560	550	465	318	144	368	-	110	110	445	47.5	106
200	-	-	280MA		22	140	500	450	550	18.5	5	457	110	560	550	465	318	144	419	368	130	137	495	47.5	106
-	160 185	110 132	280MB		22	140	500	450	550	18.5	5	457	110	560	550	465	318	144	419	368	130	137	495	47.5	106

FRAME SIZE	C	H	HA	HE	K	L	LL	O	UB	SHAFT EXTENSION								BEARING		
										D	E	EB	EF	EG	F	G	GA	DB	DRIVE END	OPPOSITE DRIVE END
280SB	190	280	35	367	24	1037	288	140	M63X1.5	75	140	125	7.5	40	20	67.5	79.5	M20	6318C3	6316C3
280MA	190	280	35	367	24	1087.5	288	140	M63X1.5	65	140	125	7.5	40	18	58	69	M20	6316C3	6314C3
280MB	190	280	35	367	24	1087.5	288	140	M63X1.5	75	140	125	7.5	40	20	67.5	79.5	M20	6318C3	6316C3

NOTE :

1. Tolerance of Shaft End Diameter D : m6
2. Tolerance of Key Width F : h9
3. Tolerance of Shaft Center Height H : +0, -1
4. Tolerance of N : j6
5. T-Box Assy with two cable grand bodies.

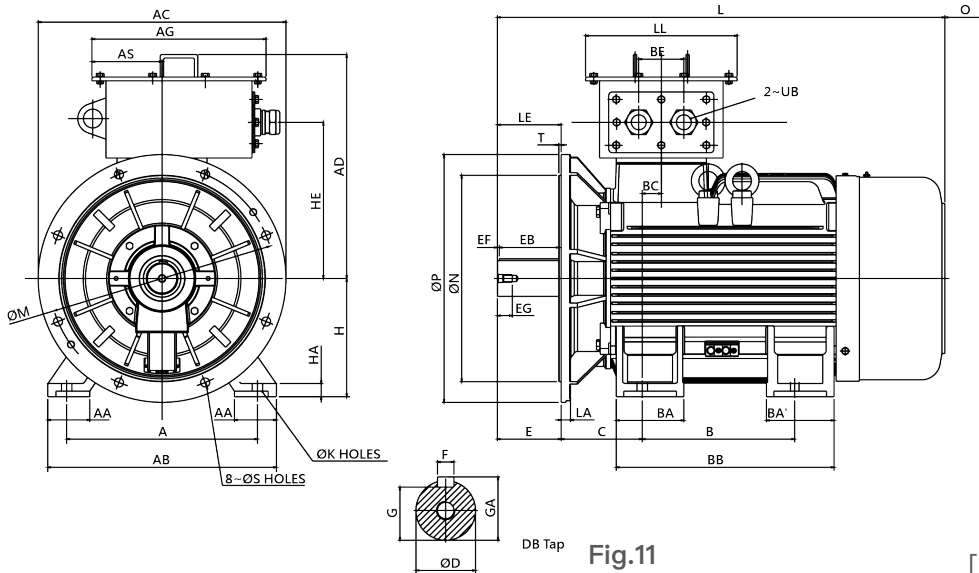


Fig.11

[Dimension in mm]

Output (kW)			FRAME SIZE	FIG NO.	FLANGE DIMENSION							A	AA	AB	AC	AD	AG	AS	B	BA	BA'	BB	BC	BE
3000 rpm	1500 rpm	1000 rpm			LA	LE	M	N	P	S	T													
280	-	-			315SA	FIG.11	25	140	600	550	660													
-	200	160	315SB	25	170		600	550	660	24	6	508	115	615	660	596.5	464	190	406	180	180	580	53	120

FRAME SIZE	C	H	HA	HE	K	L	LL	O	UB	SHAFT EXTENSION								BEARING		
										D	E	EB	EF	EG	F	G	GA	DB	DRIVE END	OPPOSITE DRIVE END
315SA	216	315	35	441	28	1162	404	180	M72x2	65	140	125	7.5	40	18	58	69	M20	6316C3	6314C3
315SB	216	315	35	441	28	1192	404	180	M72x2	80	170	160	5	40	22	71	85	M20	6320C3	6316C3

NOTE :

1. Tolerance of Shaft End Diameter D : m6
2. Tolerance of Key Width F : h9
3. Tolerance of Shaft Center Height H : +0, -1
4. Tolerance of N : js6
5. T-Box Assy with two cable grand bodies.

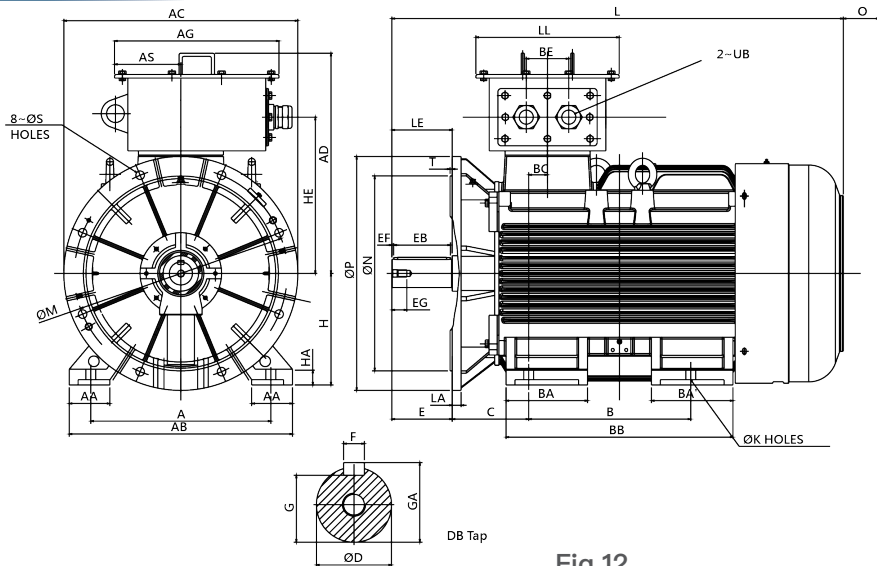


Fig.12

[Dimension in mm]

Output (kW)			FRAME SIZE	FIG NO.	FLANGE DIMENSION							A	AA	AB	AC	AD	AG	AS	B	BA	BA'	BB	BC	BE
3000 rpm	1500 rpm	1000 rpm			LA	LE	M	N	P	S	T													
315 355	-	-			315MA	FIG.12	25	140	600	550	660													
45	250 280 315	185 200	315MB	25	170		600	550	660	24	6	508	130	630	660	621.5	464	190	457	230	230	640	53	120

FRAME SIZE	C	H	HA	HE	K	L	LL	O	UB	SHAFT EXTENSION							BEARING			
										D	E	EB	EF	EG	F	G	GA	DB	DRIVE END	OPPOSITE DRIVE END
315MA	216	315	45	441	28	1246	404	180	M72X2	65	140	125	7.5	40	18	58	69	M20	6316C3	6314C3
315MB	216	315	45	441	28	1276	404	180	M72X2	80	170	160	5	40	22	71	85	M20	6320C3	6316C3

NOTE :

1. Tolerance of Shaft End Diameter D : m6
2. Tolerance of Key Width F : h9
3. Tolerance of Shaft Center Height H : +0, -1
4. Tolerance of N : js6
5. T-Box Assy with two cable grand bodies.

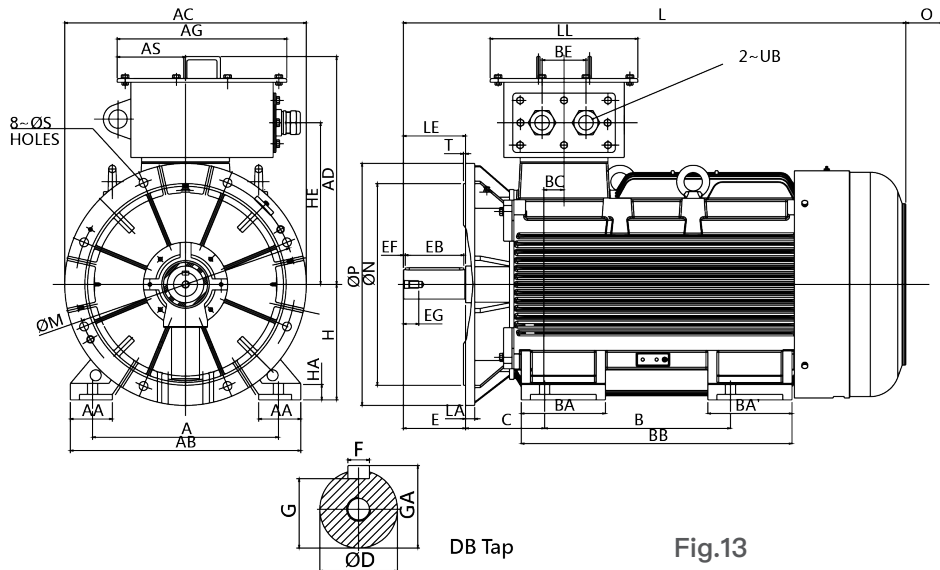


Fig.13

[Dimension in mm]

Output (kW)			FRAME SIZE	FIG NO.	FLANGE DIMENSION							A	AA	AB	AC	AD	AG	AS	B	BA	BA'	BB	BC	BE
3000 rpm	1500 rpm	1000 rpm			LA	LE	M	N	P	S	T													
375	-	-	315LA	FIG.13	25	170	600	550	660	24	6	508	130	630	660	621.5	464	190	508	230	230	740	53	120
-	355	250	315LB		25	170	600	550	660	24	6	508	130	630	660	621.5	464	190	508	230	230	740	53	120

FRAME SIZE	C	H	HA	HE	K	L	LL	O	UB	SHAFT EXTENSION								BEARING		
										D	E	EB	EF	EG	F	G	GA	DB	DRIVE END	OPPOSITE DRIVE END
315LA	216	315	45	441	28	1346	404	180	M72X2	65	140	125	7.5	40	18	58	69	M20	6316C3	6314C3
315LB	216	315	45	441	28	1346	404	180	M72X2	80	170	160	5	40	22	71	85	M20	6320C3	6316C3

NOTE :

1. Tolerance of Shaft End Diameter D : m6
2. Tolerance of Key Width F : h9
3. Tolerance of Shaft Center Height H : +0, -1
4. Tolerance of N : js6
5. T-Box Assy with two cable grand bodies.

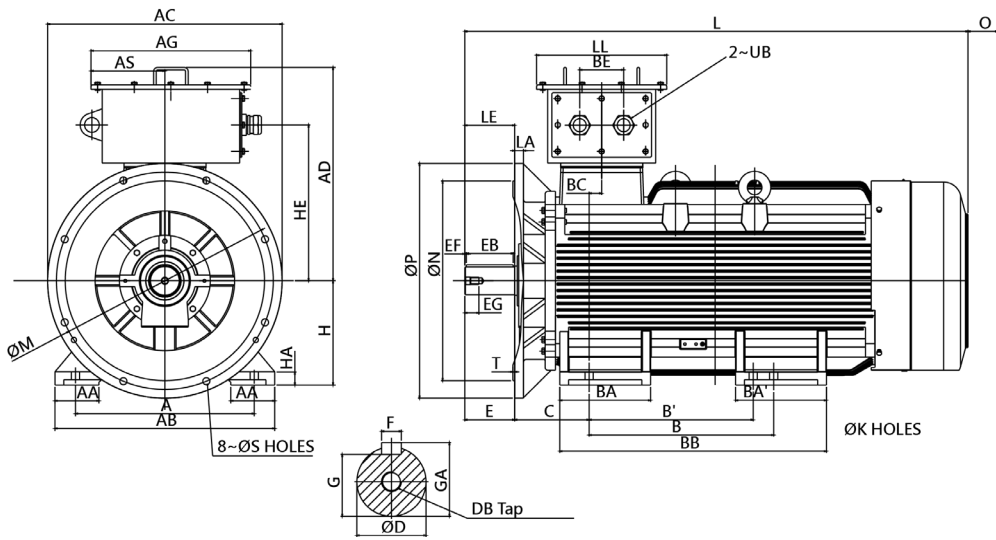


Fig.14

[Dimension in mm]

Output (kW)			FRAME SIZE	FIG NO.	FLANGE DIMENSION								A	AA	AB	AC	AD	AG	AS	B	B'	BA	BA'	BB	BC	BE
3000 rpm	1500 rpm	1000 rpm			LA	LE	M	N	P	S	T															
400	-	-	355MA	FIG.14	30	170	740	680	800	24	6	610	150	750	800	850	655	268	-	560	310	310	910	43	160	
-	375	280 315	355MB		30	170	740	680	800	24	6	610	150	750	800	727	545	252	-	560	310	310	910	43	150	

FRAME SIZE	C	H	HA	HE	K	L	LL	O	UB	SHAFT EXTENSION								BEARING		
										D	E	EB	EF	EG	F	G	GA	DB	DRIVE END	OPPOSITE DRIVE END
355MA	190	280	35	367	24	1037	288	140	M63X1.5	75	140	125	7.5	40	20	67.5	79.5	M20	6318C3	6316C3
355MB	190	280	35	367	24	1087.5	288	140	M63X1.5	65	140	125	7.5	40	18	58	69	M20	6316C3	6314C3

NOTE :

1. Tolerance of Shaft End Diameter D : m6
2. Tolerance of Key Width F : h9
3. Tolerance of Shaft Center Height H : +0, -1
4. Tolerance of N : js6
5. T-Box Assy with two cable grand bodies.

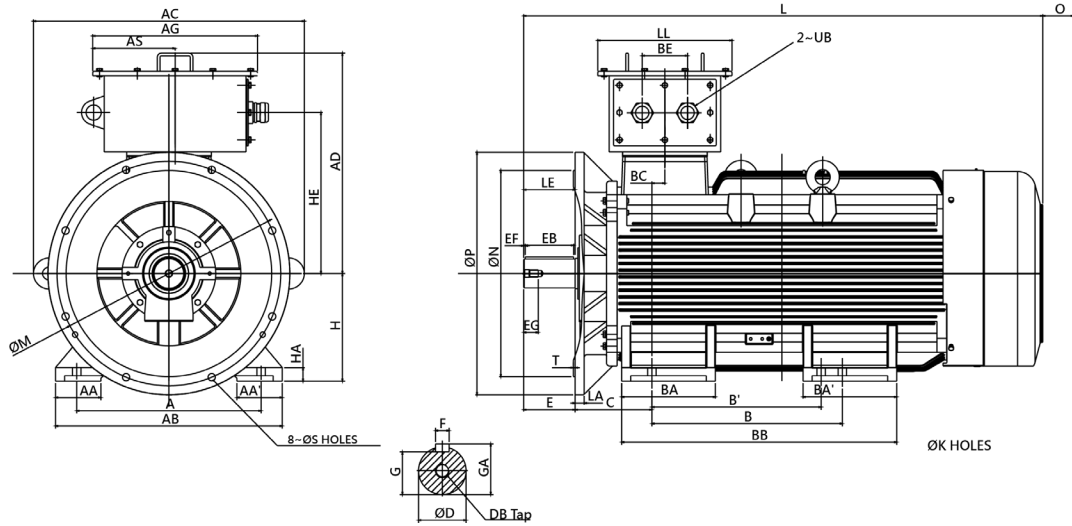


Fig.15

[Dimension in mm]

Output (kW)			FRAME SIZE	FIG NO.	FLANGE DIMENSION							A	AA	AB	AC	AD	AG	AS	B	BA	BA'	BB	BC	BE
3000 rpm	1500 rpm	1000 rpm			LA	LE	M	N	P	S	T													
-	400	-	355LB	FIG.15	30	170	740	680	800	24	6	610	150	750	800	850	655	268	630	310	310	910	43	160

FRAME SIZE	C	H	HA	HE	K	L	LL	O	UB	SHAFT EXTENSION							BEARING			
										D	E	EB	EF	EG	F	G	GA	DB	DRIVE END	OPPOSITE DRIVE END
355LB	254	355	45	591	28	1717	444	230	M72X2	95	170	160	5	48	25	86	100	M24	6322C3	6322C3

NOTE :

1. Tolerance of Shaft End Diameter D : m6
2. Tolerance of Key Width F : h9
3. Tolerance of Shaft Center Height H : +0, -1
4. Tolerance of N : js6
5. T-Box Assy with two cable grand bodies.

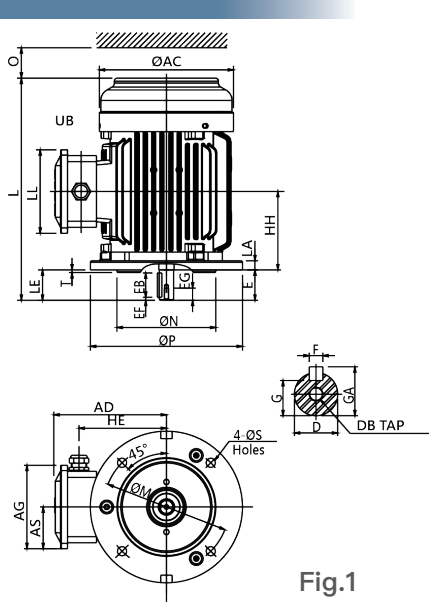


Fig.1

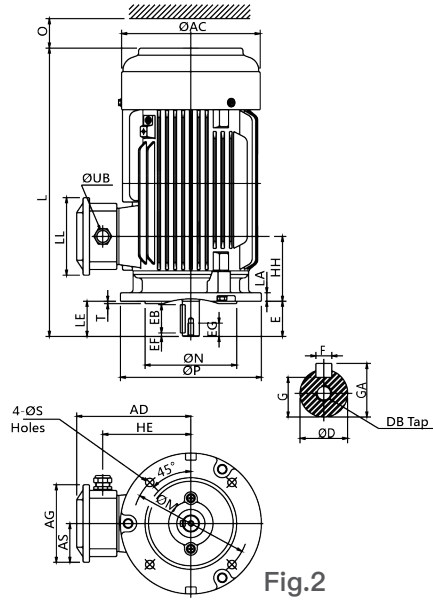


Fig.2

[Dimension in mm]

Output (kW)			FRAME SIZE	FIG NO.	FLANGE DIMENSION							AC	AD	AG	AS	HE	HH	L
3000 rpm	1500 rpm	1000 rpm			LA	LE	M	N	P	S	T							
0.75 1.5 2.2	0.75 1.5	0.75	80MA	FIG.1	12	40	165	130	200	12	3.5	177	151	111	55	115	103.5	293
-	2.2	-	80MB	FIG.2													68.5	319

FRAME SIZE	LL	O	UB	D	E	EB	EF	EG	F	G	GA	DB	BEARING	
													DRIVE END	OPPOSITE DRIVE END
80MA	111	40	M20X1.5	19	40	32	4	16	6	15.5	21.5	M6	6204ZZ	6203ZZ
80MB	111	40	M20X1.5	19	40	32	4	16	6	15.5	21.5	M6	6204ZZ	6204ZZ

NOTE :

1. Tolerance of shaft end diameter D : j6.
2. Tolerance of N : j6.
3. T-Box Assy with a cable grand body.

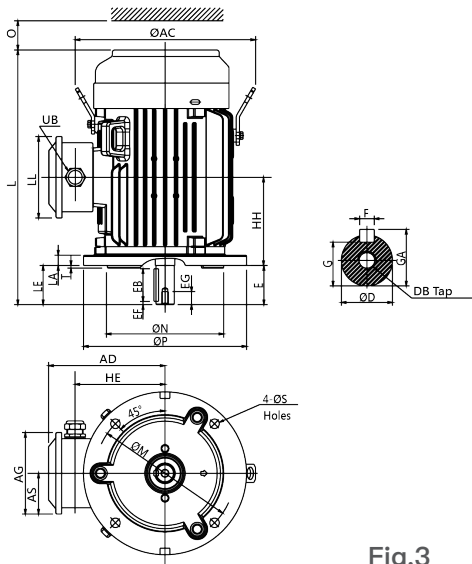


Fig.3

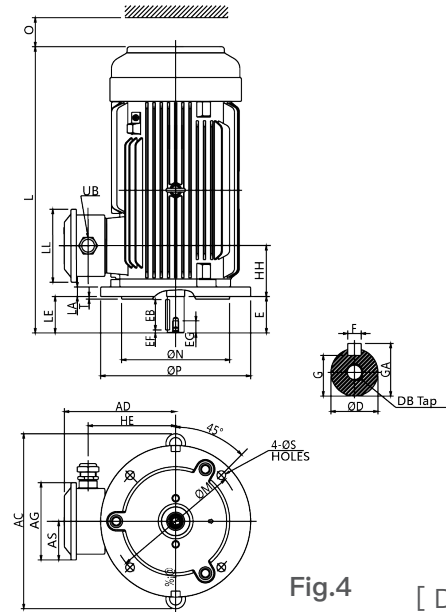


Fig.4

[Dimension in mm]

Output (kW)			FRAME SIZE	FIG NO.	FLANGE DIMENSION							AC	AD	AG	AS	HE	HH	L
3000 rpm	1500 rpm	1000 rpm			LA	LE	M	N	P	S	T							
3.7 5.5 7.5	3.7 5.5	1.5 2.2 3.7	100LA	FIG.3	16	60	215	180	250	14.5	4	292	179.5	128	63.5	138	135.5	392
-	7.5	5.5	100LB	FIG.4								289	184.5	128	63.5	143	84	472

FRAME SIZE	LL	O	UB	D	E	EB	EF	EG	F	G	GA	DB	BEARING	
													DRIVE END	OPPOSITE DRIVE END
100LA	120	50	M25X1.5	28	60	50	5	22	8	24	31	M10	6206ZZ	6205ZZ
100LB	120	50	M25X1.5	28	60	50	5	22	8	24	31	M10	6206ZZ	6206ZZ

NOTE :

1. Tolerance of shaft end diameter D : j6.
2. Tolerance of N : j6.
3. T-Box Assy with a cable grand body.

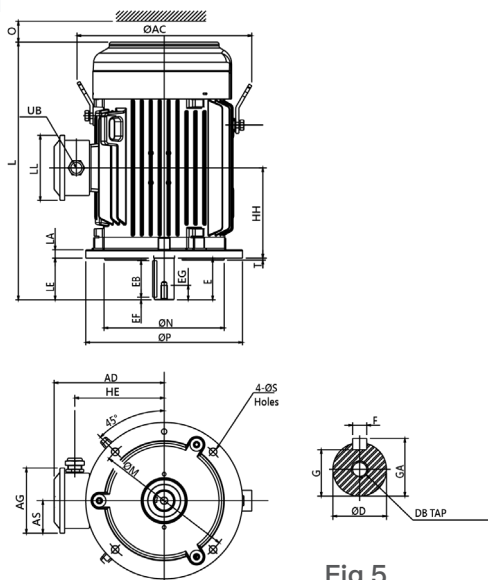


Fig.5

[Dimension in mm]

Output (kW)			FRAME SIZE	FIG NO.	FLANGE DIMENSION							AC	AD	AG	AS	HE	HH	L	LL	O
3000 rpm	1500 rpm	1000 rpm			LA	LE	M	N	P	S	T									
11 15 18.5	11	7.5	132S	FIG.5	16	80	265	230	300	14.5	4	349.5	209.5	128	63.5	168	154	456	120	50
-	15	15	132M		16	80	265	230	300	14.5	4	349.5	209.5	128	63.5	168	173	494	120	50

FRAME SIZE	UB	SHAFT EXTENSION									BEARING	
		D	E	EB	EF	EG	F	G	GA	DB	DRIVE END	OPPOSITE DRIVE END
132S	M25X1.5	38	80	70	5	28	10	33	41	M12	6308ZZ	6306ZZ
132M	M25X1.5	38	80	70	5	28	10	33	41	M12	6308ZZ	6306ZZ

NOTE :

1. Tolerance of shaft end diameter D : k6 .
2. Tolerance of N : j6.
3. T-Box Assy with a cable grand body.

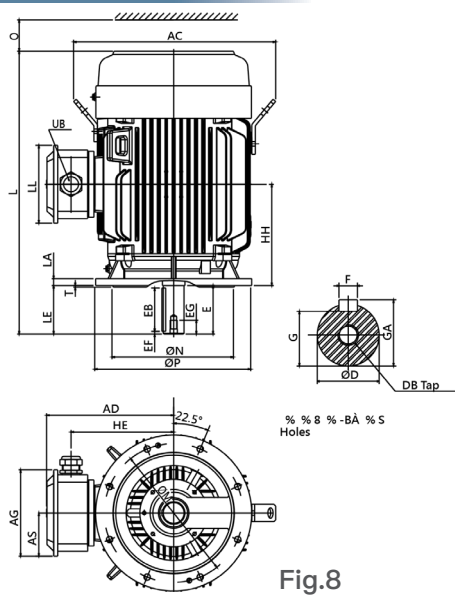


Fig.8

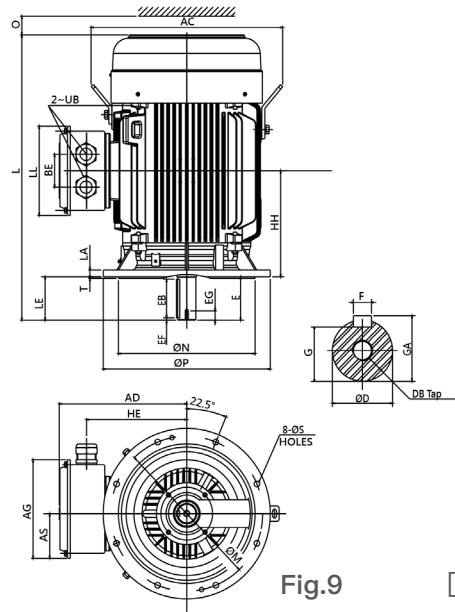


Fig.9

[Dimension in mm]

Output (kW)			FRAME SIZE	FIG NO.	FLANGE DIMENSION							AC	AD	AG	AS	HE	HH	L
3000 rpm	1500 rpm	1000 rpm			LA	LE	M	N	P	S	T							
-	75	-	225SB	FIG.8	20	140	400	350	450	18.5	5	577.4	366.5	248	124	296	292	815
110	-	-	225MA		20	110	400	350	450	18.5	5	577.4	366.5	248	124	296	304.5	810
-	-	45 55	225MB		20	140	400	350	450	18.5	5	577.4	366.5	248	124	296	304.5	840
132 160 185	-	-	250MA	FIG.9	22	140	500	450	550	18.5	5	629.5	419.5	318	144	330	342.5	921
-	90 110 132	75	250MB		22	140	500	450	550	18.5	5	629.5	419.5	318	144	330	342.5	921

FRAME SIZE	LL	BE	O	UB	SHAFT EXTENSION										BEARING	
					D	E	EB	EF	EG	F	G	GA	DB	DRIVE END	OPPOSITE DRIVE END	
225SB	224	-	90	M63X1.5	60	140	125	7.5	42	18	53	64	M20	6313C3	6213C3	
225MA	224	-	90	M63X1.5	55	110	100	5	42	16	49	59	M20	6312C3	6212C3	
225MB	224	-	90	M63X1.5	60	140	125	7.5	42	18	53	64	M20	6313C3	6213C3	
250MA	288	106	105	M63X1.5	60	140	125	7.5	42	18	53	64	M20	6313C3	6313C3	
250MB	288	106	105	M63X1.5	65	140	125	7.5	42	18	58	69	M20	6315C3	6313C3	

NOTE :

1. Tolerance of shaft end diameter D : m6.
2. Tolerance of N : j6.
3. T-Box Assy with a cable grand body. (250M with two cable grand bodies)

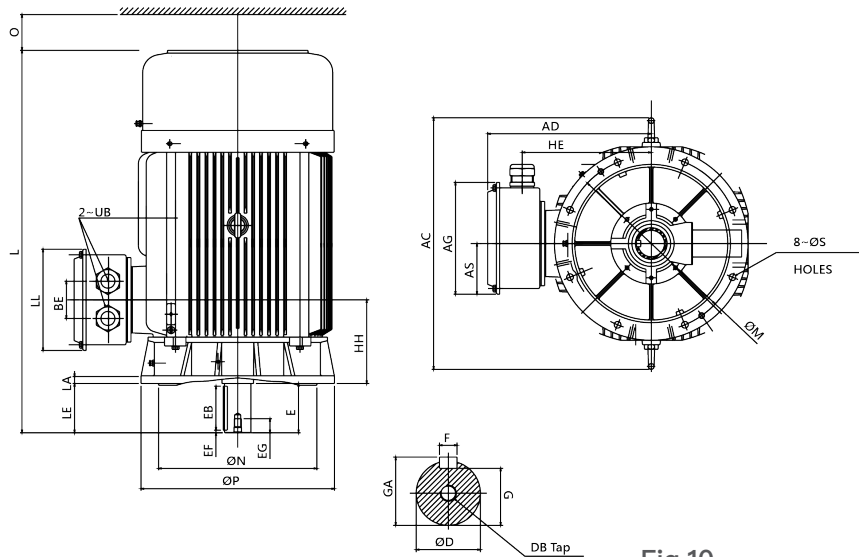


Fig.10

[Dimension in mm]

Output (kW)			FRAME SIZE	FIG NO.	FLANGE DIMENSION							AC	AD	AG	AS	HE	HH	BE	L
3000 rpm	1500 rpm	1000 rpm			LA	LE	M	N	P	S	T								
-	-	90	280SB	FIG.10	22	140	140	450	550	18.5	5	717	465	318	144	367	238	106	1037
200 250	-	-	280MA		22	140	140	450	550	18.5	5	717	465	318	144	367	238	106	1087.5
-	160 185	110 132	280MB		22	140	140	450	550	18.5	5	717	465	318	144	367	238	106	1087.5

FRAME SIZE	LL	O	UB	SHAFT EXTENSION									BEARING	
				D	E	EB	EF	EG	F	G	GA	DB	DRIVE END	OPPOSITE DRIVE END
280SB	288	140	M63X1.5	75	140	125	7.5	40	20	67.5	79.5	M20	6318C3	6316C3
280MA	288	140	M63X1.5	65	140	125	7.5	40	18	58	69	M20	6316C3	6314C3
280MB	288	140	M63X1.5	75	140	125	7.5	40	20	67.5	79.5	M20	6318C3	6316C3

NOTE :

1. Tolerance of Shaft End Diameter D : m6
2. Tolerance of Key Width F : h9
3. Tolerance of N : j6
4. T-Box Assy with two cable grand bodies.

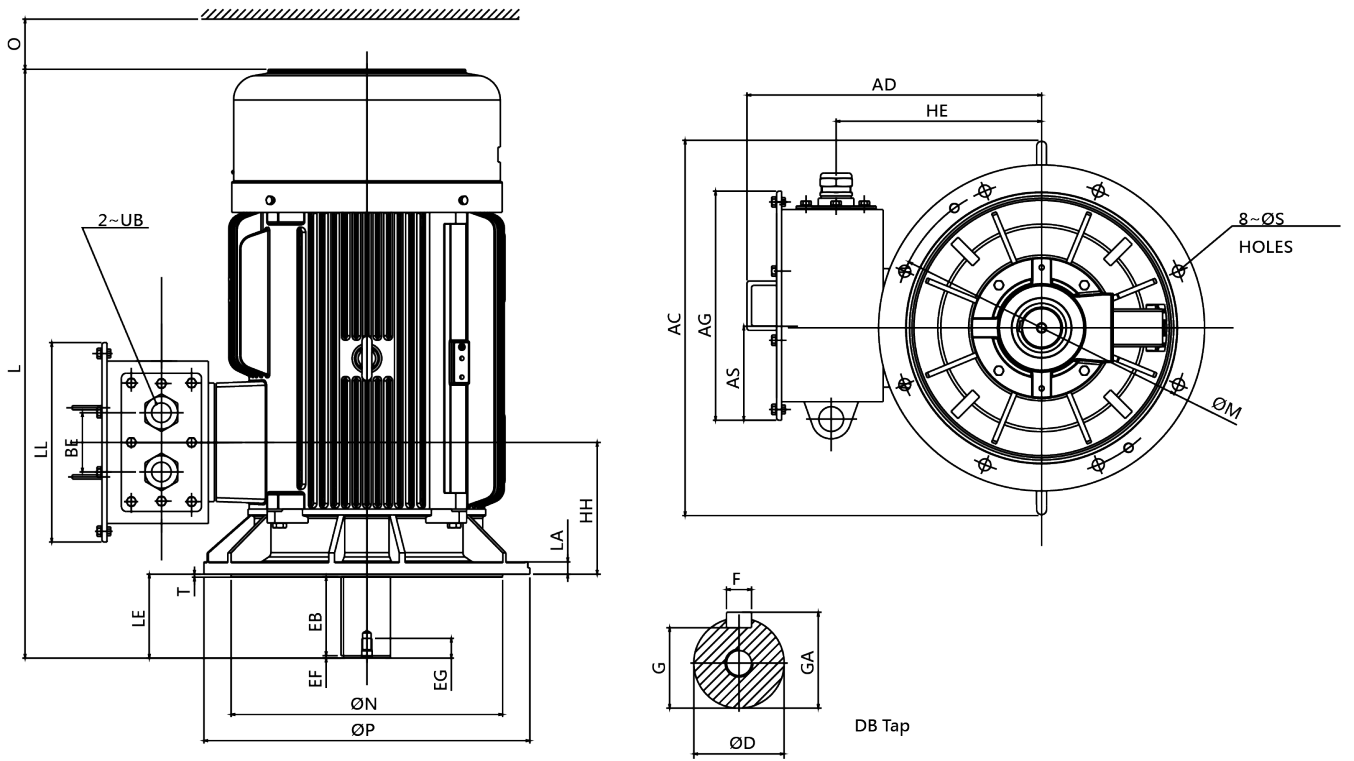


Fig.11

[Dimension in mm]

Output (kW)			FRAME SIZE	FIG NO.	FLANGE DIMENSION							AC	AD	AG	AS	BE	HE	HH	L	LL	O
3000 rpm	1500 rpm	1000 rpm			LA	LE	M	N	P	S	T										
280	-	-	315SA	FIG.11	25	140	600	550	660	24	6	715	596.5	464	190	120	441	269	1162	404	180
-	200	160	315SB		25	170	600	550	660	24	6	715	596.5	464	190	120	441	269	1192	404	180

FRAME SIZE	UB	SHAFT EXTENSION									BEARING	
		D	E	EB	EF	EG	F	G	GA	DB	DRIVE END	OPPOSITE DRIVE END
315SA	M72X2	65	140	125	7.5	40	18	58	69	M20	6316C3	7314B
315SB	M72X2	80	170	160	5	40	22	71	85	M20	6320C3	6316C3

NOTE :

1. Tolerance of Shaft End Diameter D : m6
2. Tolerance of Key Width F : h9
3. Tolerance of N : js6
4. .T-Box Assy with two cable grand bodies.

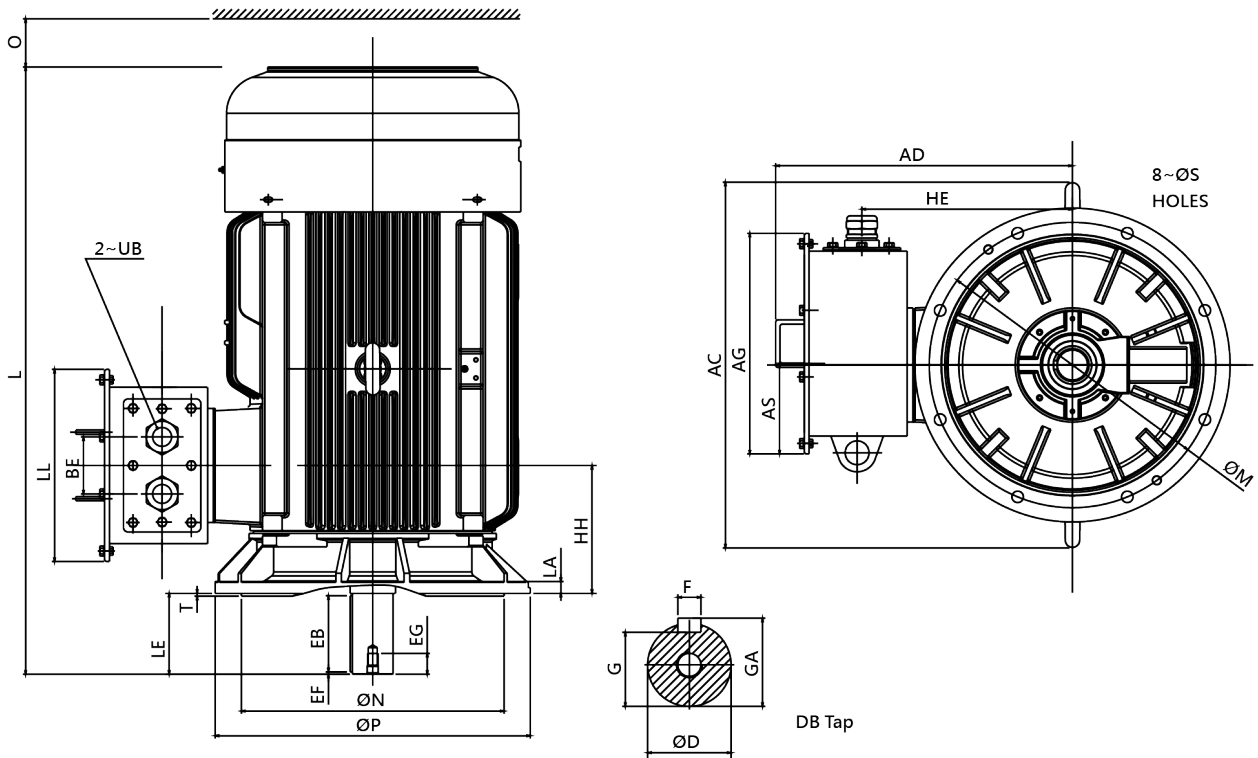


Fig.12

[Dimension in mm]

Output (kW)			FRAME SIZE	FIG NO.	FLANGE DIMENSION							AC	AD	AG	AS	BE	HE	HH	L	LL	O
3000 rpm	1500 rpm	1000 rpm			LA	LE	M	N	P	S	T										
315	-	-	315MA	FIG.12	25	140	600	550	660	24	6	810	621.5	464	190	120	441	269	1246	404	180
-	250	185	315MB		25	170	600	550	660	24	6	810	621.5	464	190	120	441	269	1276	404	180

FRAME SIZE	UB	SHAFT EXTENSION									BEARING	
		D	E	EB	EF	EG	F	G	GA	DB	DRIVE END	OPPOSITE DRIVE END
315MA	M72X2	75	140	125	7.5	40	18	58	69	M20	6316C3	7314B
315MB	M72X2	80	170	160	5	40	22	71	85	M20	6320C3	6316C3

NOTE :

1. Tolerance of Shaft End Diameter D : m6
2. Tolerance of Key Width F : h9
3. Tolerance of N : js6
4. T-Box Assy with two cable grand bodies.

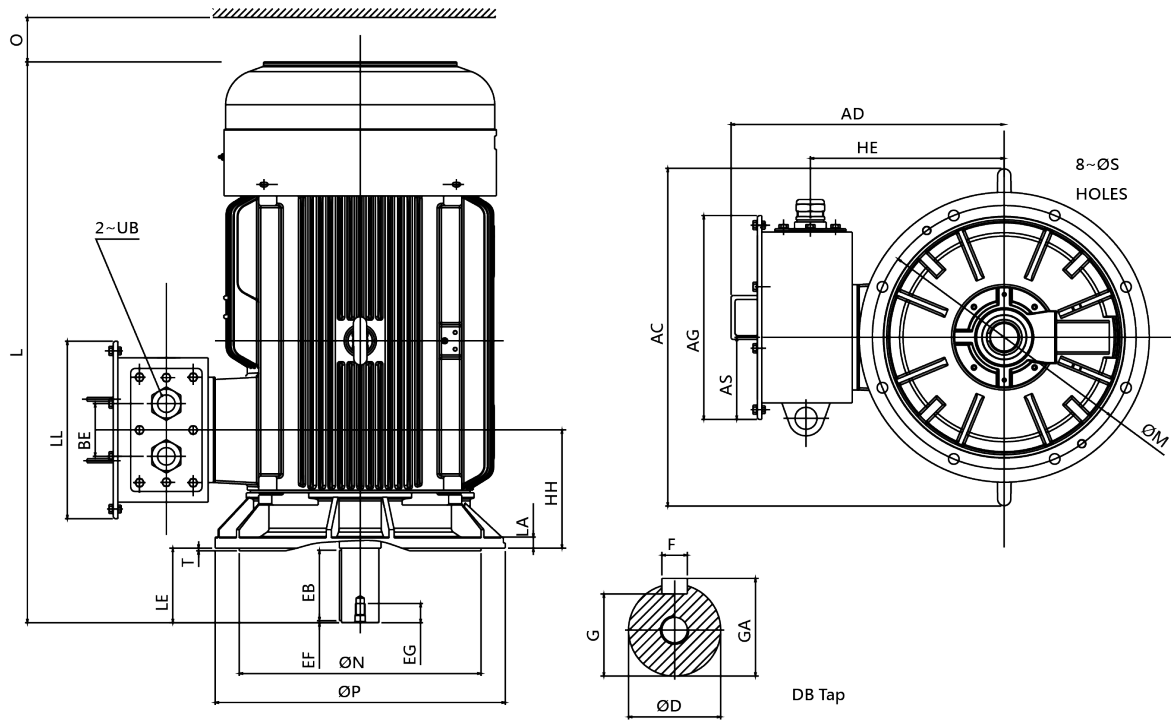


Fig.13

[Dimension in mm]

Output (kW)			FRAME SIZE	FIG NO.	FLANGE DIMENSION							AC	AD	AG	AS	BE	HE	HH	L	LL	O
3000 rpm	1500 rpm	1000 rpm			LA	LE	M	N	P	S	T										
375	-	-	315LA	FIG.13	25	170	600	550	660	24	6	810	622	464	190	120	441	269	1346	404	180
-	355	250	315LB		25	170	600	550	660	24	6	810	622	464	190	120	441	269	1346	404	180

FRAME SIZE	UB	SHAFT EXTENSION									BEARING	
		D	E	EB	EF	EG	F	G	GA	DB	DRIVE END	OPPOSITE DRIVE END
315LA	M72X2	65	140	125	7.5	40	18	58	69	M20	6316C3	7314B
315LB	M72X2	80	170	160	5	40	22	71	85	M20	6320C3	6316C3

NOTE :

1. Tolerance of Shaft End Diameter D : m6
2. Tolerance of Key Width F : h9
3. Tolerance of N : js6
4. T-Box Assy with two cable grand bodies.

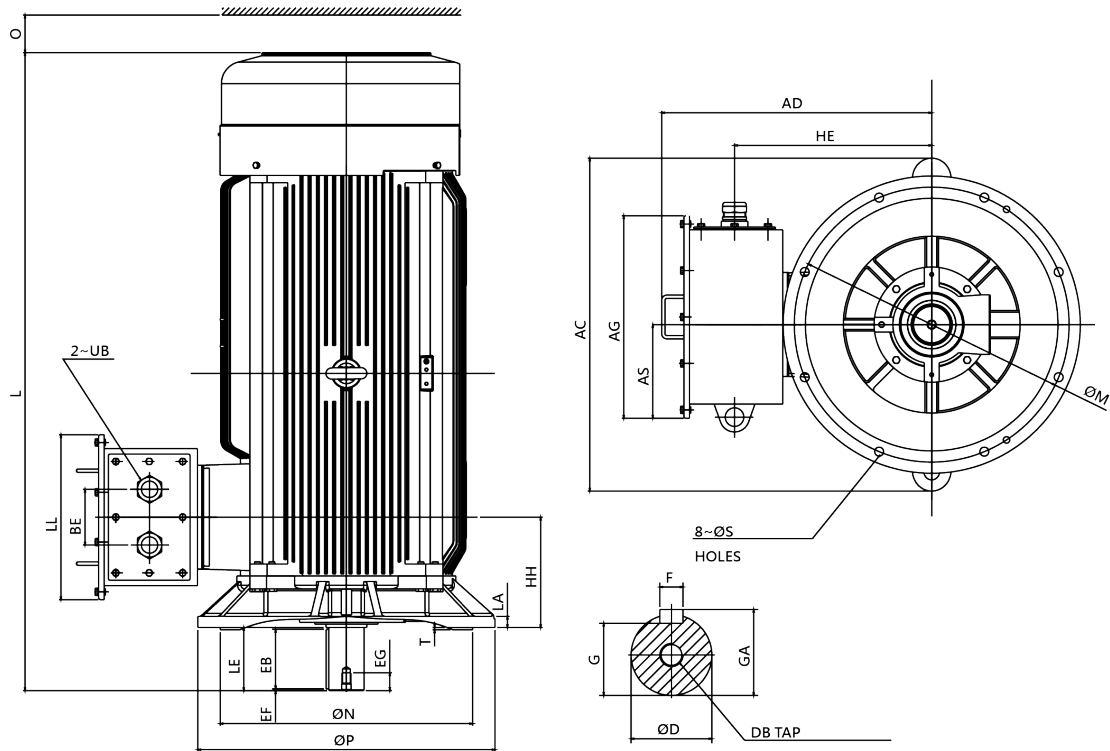


Fig.14

[Dimension in mm]

Output (kW)			FRAME SIZE	FIG NO.	FLANGE DIMENSION							AC	AD	AG	AS	BE	HE	HH	L	LL	O
3000 rpm	1500 rpm	1000 rpm			LA	LE	M	N	P	S	T										
400	-	-	355MA	FIG.14	30	170	740	680	800	24	6	896	850	655	268	160	591	297	1687	444	230
-	375	280 315	355MB		30	170	740	680	800	24	6	896	727	545	252	152	531	297	1717	444	230

FRAME SIZE	UB	SHAFT EXTENSION									BEARING	
		D	E	EB	EF	EG	F	G	GA	DB	DRIVE END	OPPOSITE DRIVE END
355MA	M72X2	75	140	125	7.5	40	20	67.5	79.5	M20	6317C3	7317B
355MB	M72X2	95	170	160	5	48	25	86	100	M24	6322C3	7322B

NOTE :

1. Tolerance of Shaft End Diameter D : m6
2. Tolerance of Key Width F : h9
3. Tolerance of N : js6
4. .T-Box Assy with two cable grand bodies.

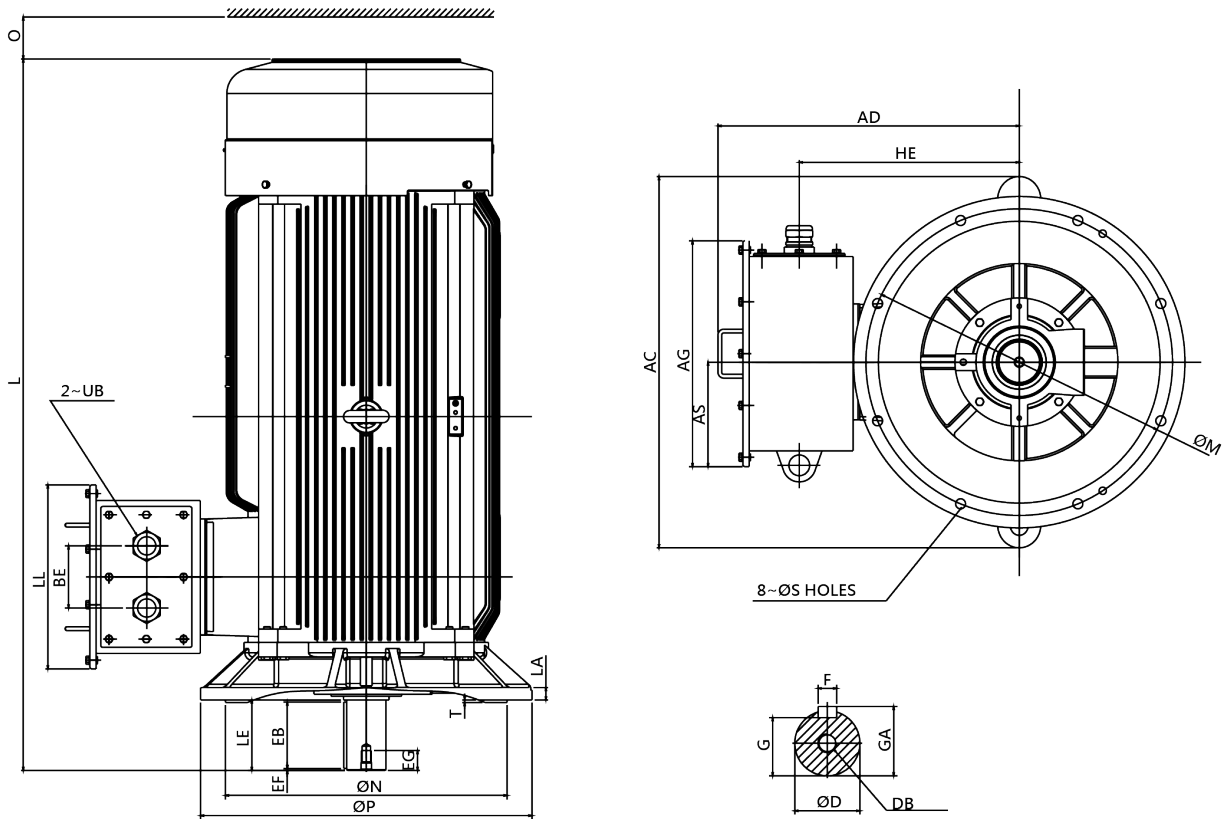


Fig.15

[Dimension in mm]

Output (kW)			FRAME SIZE	FIG NO.	FLANGE DIMENSION							AC	AD	AG	AS	HE	HH	L	LL	O
3000 rpm	1500 rpm	1000 rpm			LA	LE	M	N	P	S	T									
-	400	-	355LB	FIG.15	30	170	740	680	800	24	6	896	850	655	268	160	591	1717	444	230

FRAME SIZE	UB	SHAFT EXTENSION									BEARING	
		D	E	EB	EF	EG	F	G	GA	DB	DRIVE END	OPPOSITE DRIVE END
355LB	M72X2	95	170	160	5	48	25	86	100	M24	6322C3	7322B

NOTE :

1. Tolerance of Shaft End Diameter D : m6
2. Tolerance of Key Width F : h9
3. Tolerance of N : js6
4. T-Box Assy with two cable grand bodies.





For more information,
please visit TECO website.