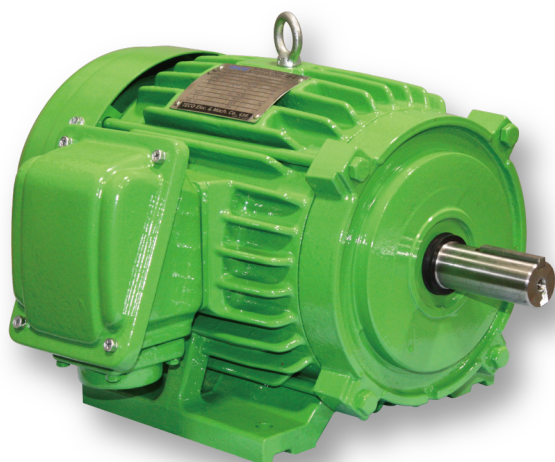


Super Premium Efficiency Permanent Magnet Motor

IE4 DVEM Series
IE5 DVEZ Series



TECO 

Together, we empower the **Future** 



Content

| | |
|-------|--------------------------------------|
| 01-02 | Product Features Introduction |
| 03-04 | DVEM Spec Sheet |
| 05 | Performance Data - DVEM 460V |
| 06 | DVEM T-N Curve |
| 07-10 | Outline Dimension - DVEM 143T~286TSC |
| 11-12 | DVEZ Spec Sheet |
| 13 | Performance Data - DVEZ 460V |
| 14 | DVEZ T-N Curve |
| 15-22 | Outline Dimension - DVEZ 143T~365TC |

Super Premium Efficiency PM Motor

Integrated IE4 & IE5 Performance for Next-Generation Efficiency

This Super Premium Efficiency three-phase permanent magnet motor series is engineered to elevate performance to the next level. By integrating advanced IE4 (DVEM) and IE5 (DVEZ) technologies, it delivers exceptional energy efficiency, powerful torque output, and highly responsive operation — setting a new benchmark for modern industrial motor solutions.



Built on proven permanent magnet synchronous motor (PMSM) technology, the series maintains high efficiency across the entire speed range, helping customers significantly reduce energy consumption and overall operating costs. With output ratings from 1–50 HP and NEMA frame sizes spanning 143T–365TC / 143TC–286TSC, these motors are versatile enough to support applications running at 1200, 1800, and 3600 RPM. This makes them ideal for HVAC equipment, pumps, fans, and a wide variety of industrial machinery.

Engineered for durability and long service life, each motor features a rugged cast-iron housing, IP55 protection, and Class F insulation to ensure reliable operation even in demanding environments. Cooling configurations such as IC410 and IC411 provide stable thermal performance, enabling continuous-duty operation with confidence and consistency.

Key Highlights



- **Advanced IE4 + IE5 Efficiency Platform**

Industry-leading energy efficiency with enhanced dynamic performance.



- **Wide Output & Frame Range**

Supports 1–50 HP across 143T–286TSC/143T–365TC frames.



- **High-Grade NdFeB Permanent Magnet Rotor**

Maintains superior efficiency and torque across all speeds.



- **Reduced Energy Usage & Operating Costs**

Lower power consumption and smaller carbon footprint.



- **Durable Construction**

Cast-iron housing, IP55 rating, Class F insulation for long service life.



- **Optimized Cooling Performance**

IC410 & IC411 cooling for effective thermal management.



- **Strong Low-Speed Torque**

Wide constant-torque operation for variable-speed applications.



- **Inverter-Ready Compatibility**

Seamless integration with PM inverters for precise speed control.

Application



HVAC & Building Energy Systems



Industrial Fans & Air Handling Systems



Pumps & Fluid Handling Equipment



Smart Manufacturing Equipment

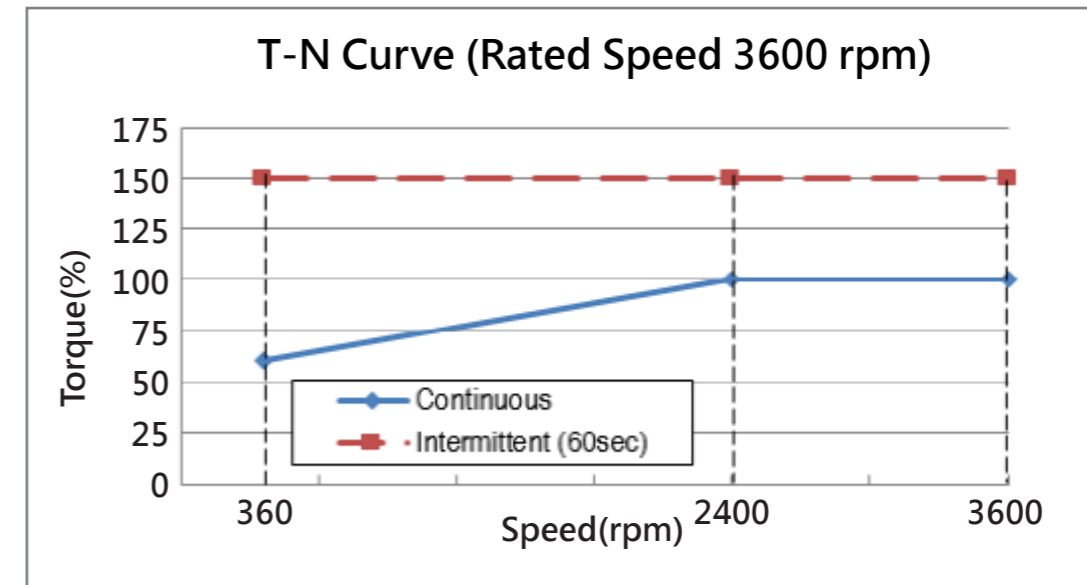
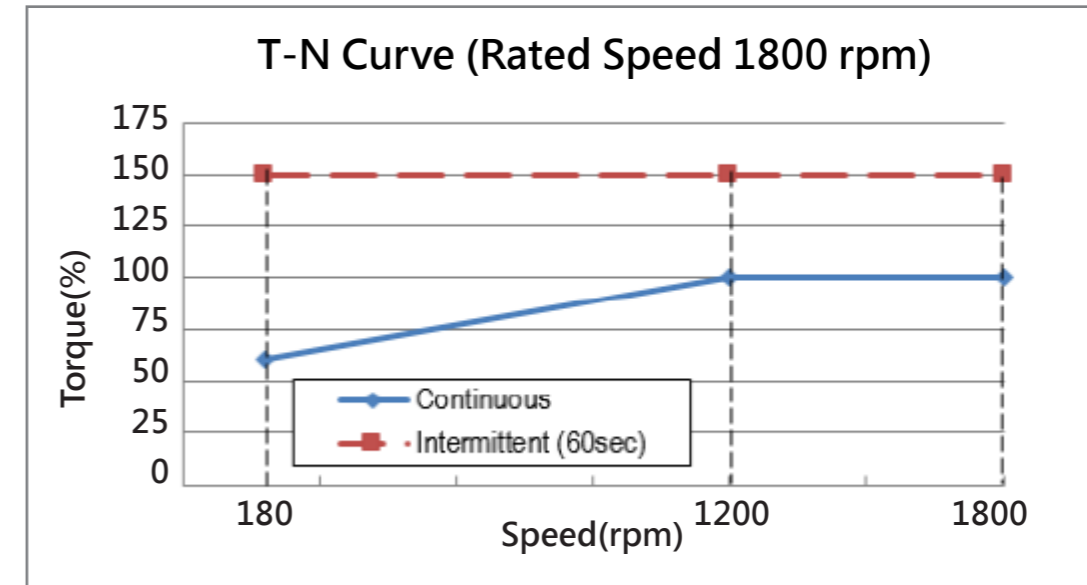
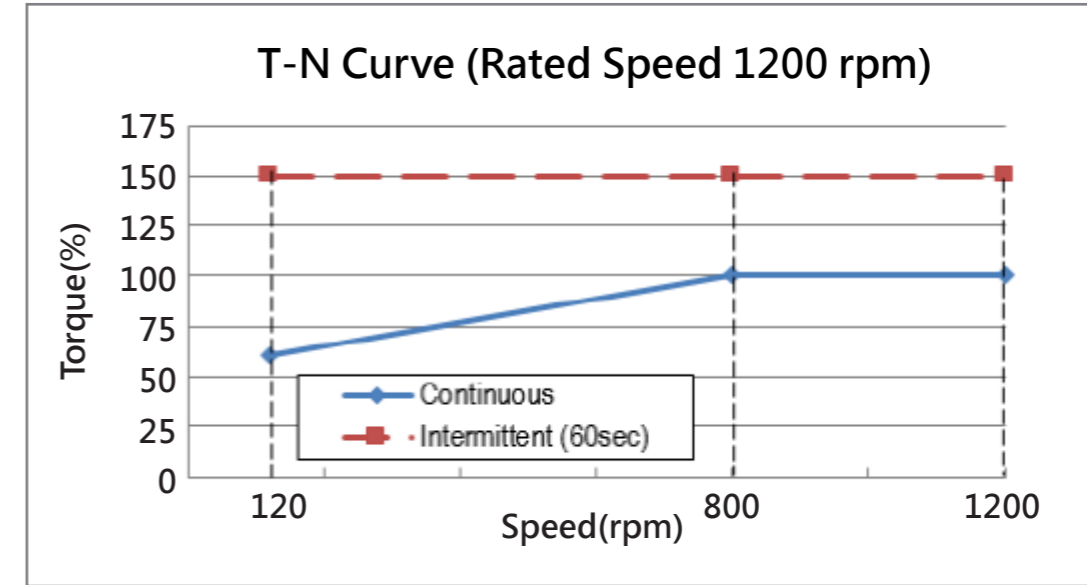
DVEM Spec Sheet

| | | |
|--------------|------------------------|---|
| RATING | Kind of Motor | Permanent Magnet Motor (PM Motor) |
| | Voltages | 460V |
| | Output Range | 1HP ~ 30HP |
| | R.P.M. (Syn.) | Rated 1200, 1800, 3600 R.P.M. |
| | Time Duty | Continuous, S.F. 1.0 (S1). |
| | Frame Nos. | 143T ~ 286T |
| | Protection Enclosure | Totally Enclosed (IP55). |
| | Cooling Method | Self External Fan, Surface Cooling (IC 411). |
| | Mounting | Horizontal Foot Mounting F-1(IM 1001),However, F-1,F-2 are Changeable. |
| APPLICATION | Power Condition | Voltage : $\pm 10\%$, Frequency : $\pm 5\%$, AND $\pm 10\%$ of Combined Voltage and Frequency, But Frequency Variation does not Exceed $\pm 5\%$. |
| | Environment Conditions | Place: Shadow, Non-Hazardous. Ambient Temperature: $-20^{\circ}\text{C} \sim 40^{\circ}\text{C}$. Relative Humidity: Less Than 90%RH (Non-Condensation). Altitude: Less Than 3,300 ft. |
| | Drive Method | Direct-Coupling Service |
| | Direction of Rotation | Bi-Directional |
| | Method of Starting | Controlled by Permanent Magnet Synchronous Motor Drive |
| CONSTRUCTION | Frame | High Grade Cast Iron With 2 Drain Holes at Bottom. |
| | End Bracket (Shield) | High Grade Cast Iron. |
| | External Fan | Plastic. |
| | Fan Cover (Hood) | Pressed Steel. |
| | Shaft | Carbon Steel, Cylindrical Single Extension With Keyseat and Key. |
| | Bearing | Grease Pre-Packed Shielded Rolling Bearings. |
| | Lubricant | Mineral Oil, Li-Base Grease (MULTEMP SRL). |
| | Shaft Flinger | V-Ring on Both Ends. |
| | Terminal Box | Pressed Steel, Larger Size, Can be Set 90° Apart, with Clearance Hole Cable Entrance, F-1 F-2 Interchangeable. |
| | Lead Terminal | 3 Leads with Solderless Lug Terminals |

DVEM Spec Sheet

| | | | |
|------------------|--------------------|---|--|
| CONSTRUCTION | Iron Core | High Grade, Insulated, Cold-Rolled Electro-Magnetic Steel Plate. | |
| | Stator Winding | Pre-Formed, Random Wound, Made of Heavy, Heat-Resist Polyester Enameled Copper Wire. | |
| | Stator Insulation | Class F Insulation System. | |
| | Varnish Treatment | Phenolic Alkyd Resin Varnish, and Red Varnish Spray of Both Coil Ends. | |
| | Rotor Structure | Permanent Magnet NdFeB | |
| | Painting | Phenolic Rust Proof Base Plus Lacquer Surface Finished Painting in Green Color (Munsell 10GY 5/12). | |
| | Name Plate | Stainless Steel Plate. | |
| | Bolt Thread | ISO Metric System, | |
| | Grounding Terminal | Be Set Inside the Terminal Box. | |
| | PERFORMANCE | Temperature Rise | Not to Exceed 80°C for S.F.1.0 by Resistance Method. |
| | | Over Torque | 150% Rated Torque for 60 Sec. |
| Efficiency Level | | IE4 | |

| OUTPUT | | RPM | FRAME NO. | TORQUE | | CURRENT | | INDUCED VOLTAGE CONSTANT (mV/rpm) | Eff. (%) | Weight (lb) |
|--------|-----|------|-----------|---------------|--------------|--------------|-------------|-----------------------------------|----------|-------------|
| kW | HP | | | RATED (lb-ft) | MAX. (lb-ft) | RATED (Arms) | MAX. (Arms) | | | |
| 0.75 | 1 | 1200 | 145T | 4.4 | 6.6 | 1.5 | 2.3 | 258 | 82.7 | 42.0 |
| | | 1800 | 143T | 2.9 | 4.4 | 1.5 | 2.3 | 171 | 85.7 | 33.0 |
| | | 3600 | 143T | 1.5 | 2.2 | 1.5 | 2.3 | 89 | 83.5 | 33.0 |
| 1.1 | 1.5 | 1200 | 182T | 6.5 | 9.7 | 2.2 | 3.3 | 267 | 84.5 | 72.2 |
| | | 1800 | 145T | 4.3 | 6.5 | 2.3 | 3.5 | 169 | 87.2 | 42.0 |
| | | 3600 | 143T | 2.2 | 3.2 | 2.2 | 3.3 | 91 | 85.2 | 37.0 |
| 1.5 | 2 | 1200 | 184T | 8.8 | 13.2 | 2.9 | 4.4 | 267 | 85.9 | 69.2 |
| | | 1800 | 145T | 5.9 | 8.8 | 3.0 | 4.5 | 169 | 88.2 | 46.0 |
| | | 3600 | 145T | 2.9 | 4.4 | 3.0 | 4.5 | 91 | 86.5 | 36.7 |
| 2.2 | 3 | 1200 | 213T | 12.9 | 19.4 | 4.4 | 6.6 | 267 | 87.4 | 107.2 |
| | | 1800 | 182T | 8.6 | 12.9 | 4.5 | 6.8 | 182 | 89.5 | 66.0 |
| | | 3600 | 182T | 4.3 | 6.5 | 4.4 | 6.6 | 88 | 88.0 | 66.0 |
| 3.7 | 5 | 1200 | 215T | 21.7 | 32.6 | 7.0 | 10.5 | 274 | 89.3 | 115.0 |
| | | 1800 | 184T | 14.5 | 21.7 | 7.0 | 10.5 | 181 | 90.9 | 90.0 |
| | | 3600 | 184T | 7.2 | 10.9 | 7.1 | 10.7 | 90 | 89.7 | 69.2 |
| 5.5 | 7.5 | 1200 | 254T | 32.3 | 48.4 | 10.2 | 15.3 | 275 | 90.5 | 176.0 |
| | | 1800 | 213T | 21.5 | 32.3 | 10.4 | 15.6 | 180 | 91.9 | 101.0 |
| | | 3600 | 213T | 10.8 | 16.1 | 11.0 | 16.5 | 88 | 90.9 | 94.8 |
| 7.5 | 10 | 1200 | 256T | 44.0 | 66.0 | 14.5 | 21.8 | 272 | 91.3 | 215.7 |
| | | 1800 | 215T | 29.3 | 44.0 | 14.5 | 21.8 | 179 | 92.6 | 115.0 |
| | | 3600 | 215T | 14.7 | 22.0 | 14.0 | 21.0 | 94 | 91.7 | 106.7 |
| 11 | 15 | 1200 | 284T | 64.6 | 96.8 | 20.0 | 30.0 | 286 | 92.3 | 299.0 |
| | | 1800 | 254T | 43.0 | 64.6 | 20.0 | 30.0 | 190 | 93.3 | 176.0 |
| | | 3600 | 254T | 21.5 | 32.3 | 20.0 | 30.0 | 94 | 92.6 | 162.8 |
| 15 | 20 | 1200 | 286T | 88.0 | 132.1 | 27.5 | 41.3 | 283 | 92.9 | 326.0 |
| | | 1800 | 256T | 58.7 | 88.0 | 28.0 | 42.0 | 181 | 93.9 | 196.0 |
| | | 3600 | 256T | 29.3 | 44.0 | 28.0 | 42.0 | 95 | 93.3 | 186.1 |
| 18.5 | 25 | 1800 | 284T | 72.4 | 108.6 | 33.0 | 49.5 | 195 | 94.2 | 299.0 |
| | | 3600 | 284TS | 36.2 | 54.3 | 33.5 | 50.3 | 95 | 93.7 | 266.9 |
| 22 | 30 | 1800 | 286T | 86.1 | 129.1 | 39.5 | 59.3 | 193 | 94.5 | 326.0 |
| | | 3600 | 286TS | 43.0 | 64.6 | 39.5 | 59.3 | 98 | 94.0 | 312.2 |



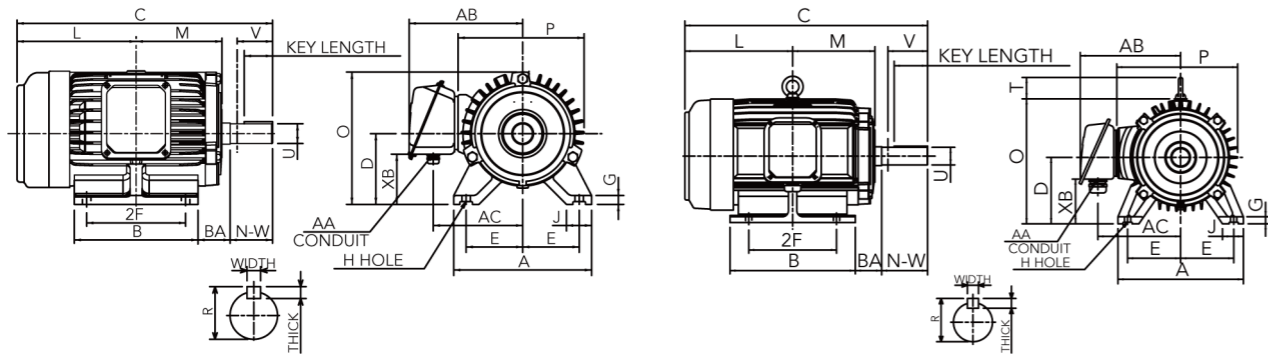


FIG.1

FIG.2

(Dimensions in mm)

| Output(HP) | | | FRAME SIZE | FIG. NO. | Mounting | | | | A | B | C | D | G | J | L | M | O |
|------------|----------|----------|------------|----------|----------|-------|------|------|-------|-------|-------|------|------|------|-------|------|-------|
| 1200 rpm | 1800 rpm | 3600 rpm | | | E | 2F | H | BA | | | | | | | | | |
| - | 1 | 1/1.5 | 143T | FIG.1 | 2.75 | 4.00 | 0.34 | 2.25 | 6.69 | 5.12 | 12.19 | 3.50 | 0.35 | 1.40 | 5.69 | 3.88 | 6.93 |
| 1 | 1.5/2 | 2 | 145T | | 2.75 | 5.00 | 0.34 | 2.25 | 6.69 | 5.91 | 13.18 | 3.50 | 0.35 | 1.40 | 6.18 | 4.37 | 6.93 |
| 1.5 | 3 | 3 | 182T | FIG.2 | 3.75 | 4.50 | 0.41 | 2.75 | 8.82 | 5.88 | 14.66 | 4.50 | 0.64 | 1.77 | 6.97 | 4.84 | 8.81 |
| 2 | 5 | 5 | 184T | | 3.75 | 5.50 | 0.41 | 2.75 | 8.82 | 6.89 | 15.67 | 4.50 | 0.64 | 1.77 | 7.42 | 5.35 | 8.81 |
| 3 | 7.5 | 7.5 | 213T | | 4.25 | 5.50 | 0.41 | 3.50 | 9.84 | 7.56 | 17.76 | 5.25 | 0.69 | 1.77 | 8.13 | 6.06 | 9.56 |
| 5 | 10 | 10 | 215T | | 4.25 | 7.00 | 0.41 | 3.50 | 9.84 | 8.35 | 18.90 | 5.25 | 0.69 | 1.77 | 8.52 | 6.46 | 9.56 |
| 7.5 | 15 | 15 | 254T | | 5.00 | 8.25 | 0.53 | 4.25 | 11.81 | 9.84 | 21.67 | 6.25 | 0.66 | 1.97 | 9.29 | 6.89 | 11.76 |
| 10 | 20 | 20 | 256T | | 5.00 | 10.00 | 0.53 | 4.25 | 11.81 | 11.81 | 23.40 | 6.25 | 0.66 | 1.97 | 10.15 | 7.76 | 11.76 |

| FRAME SIZE | P | T | Mounting | | | Keyseat | Shaft Extension | | | Terminal Housing | | | | Bearing | |
|------------|-------|------|----------|-------|--------|---------|-----------------|-------|------|------------------|------|------|------|-----------|--------------------|
| | | | WIDTH | THICK | LENGTH | R | N-W | U | V | AA | AB | AC | XB | DRIVE END | OPPOSITE DRIVE END |
| 143T | 7.03 | - | 0.188 | 0.188 | 1.41 | 0.771 | 2.25 | 0.875 | 2.20 | 0.27~0.47 | 5.84 | 4.59 | 2.52 | 6205ZZ | 6205ZZ |
| 145T | 7.03 | - | 0.188 | 0.188 | 1.41 | 0.771 | 2.25 | 0.875 | 2.20 | 0.27~0.47 | 5.84 | 4.59 | 2.52 | 6205ZZ | 6205ZZ |
| 182T | 8.74 | 1.31 | 0.250 | 0.250 | 1.78 | 0.986 | 2.75 | 1.125 | 2.70 | 0.27~0.47 | 7.19 | 5.81 | 3.33 | 6306ZZ | 6306ZZ |
| 184T | 8.74 | 1.31 | 0.250 | 0.250 | 1.78 | 0.986 | 2.75 | 1.125 | 2.70 | 0.27~0.47 | 7.19 | 5.81 | 3.33 | 6306ZZ | 6306ZZ |
| 213T | 8.79 | 1.63 | 0.312 | 0.312 | 2.41 | 1.201 | 3.38 | 1.375 | 3.30 | 0.71~0.98 | 7.93 | 6.18 | 3.32 | 6308ZZ | 6306ZZ |
| 215T | 8.79 | 1.63 | 0.312 | 0.312 | 2.41 | 1.201 | 3.38 | 1.375 | 3.30 | 0.71~0.98 | 7.93 | 6.18 | 3.32 | 6308ZZ | 6306ZZ |
| 254T | 11.47 | 2.01 | 0.375 | 0.375 | 2.91 | 1.416 | 4.00 | 1.625 | 3.90 | 0.71~0.98 | 9.55 | 7.80 | 4.20 | 6309ZZ | 6307ZZ |
| 256T | 11.47 | 2.01 | 0.375 | 0.375 | 2.91 | 1.416 | 4.00 | 1.625 | 3.90 | 0.71~0.98 | 9.55 | 7.80 | 4.20 | 6309ZZ | 6307ZZ |

- NOTE: 1. Dimension D tolerance : +0.00 inches, -0.03 inches.
 2. Dimension U tolerance of Frame 143T~215T : +0.000 inches, -0.0005 inches.
 3. Dimension U tolerance of Frame 254T~256T : +0.000 inches, -0.001 inches.
 4. Dimension R tolerance : +0.000 inches, -0.015 inches.
 5. Dimension V is length of straight part of shaft.

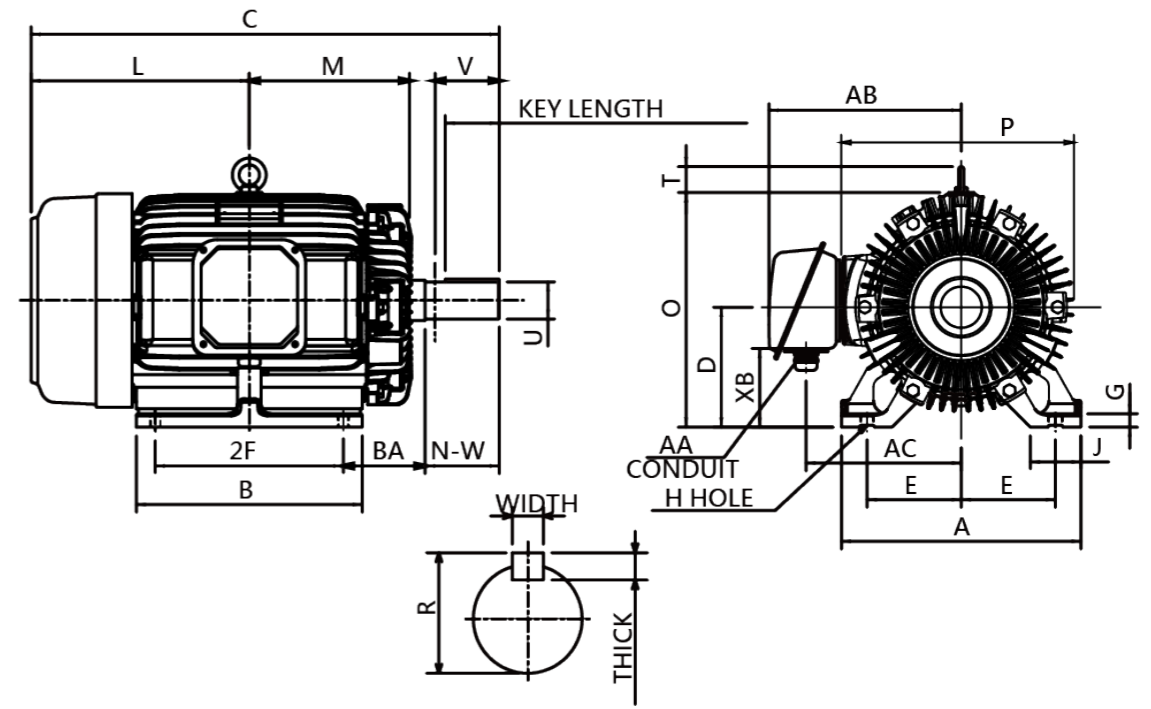


FIG.3

(Dimensions in mm)

| Output(HP) | | | FRAME SIZE | FIG. NO. | Mounting | | | | A | B | C | D | G | J | L | M | O |
|------------|----------|----------|------------|----------|----------|-------|------|------|-------|-------|-------|------|------|------|-------|------|-------|
| 1200 rpm | 1800 rpm | 3600 rpm | | | E | 2F | H | BA | | | | | | | | | |
| 15 | 25 | - | 284T | FIG.3 | 5.50 | 9.50 | 0.53 | 4.75 | 13.98 | 11.69 | 26.11 | 7.00 | 0.78 | 2.95 | 11.99 | 8.60 | 13.69 |
| - | - | 25 | 284TS | | 5.50 | 9.50 | 0.53 | 4.75 | 13.98 | 11.69 | 24.74 | 7.00 | 0.78 | 2.95 | 11.99 | 8.60 | 13.69 |
| 20 | 30 | - | 286T | | 5.50 | 11.00 | 0.53 | 4.75 | 13.98 | 11.69 | 27.61 | 7.00 | 0.78 | 2.95 | 12.74 | 9.35 | 13.69 |
| - | - | 30 | 286TS | | 5.50 | 11.00 | 0.53 | 4.75 | 13.98 | 11.69 | 26.24 | 7.00 | 0.78 | 2.95 | 12.74 | 9.35 | 13.69 |

| FRAME SIZE | P | T | Mounting | | | Keyseat | Shaft Extension | | | Terminal Housing | | | | Bearing | |
|------------|-------|------|----------|-------|--------|---------|-----------------|-------|------|------------------|-------|------|------|-----------|--------------------|
| | | | WIDTH | THICK | LENGTH | R | N-W | U | V | AA | AB | AC | XB | DRIVE END | OPPOSITE DRIVE END |
| 284T | 13.65 | 2.36 | 0.500 | 0.500 | 3.28 | 1.591 | 4.62 | 1.875 | 4.50 | 1.22~1.61 | 11.24 | 9.06 | 4.60 | 6311ZZ | 6310ZZ |
| 284TS | 13.65 | 2.36 | 0.375 | 0.375 | 1.93 | 1.416 | 3.25 | 1.625 | 3.20 | 1.22~1.61 | 11.24 | 9.06 | 4.60 | 6311ZZC3 | 6310ZZC3 |
| 286T | 13.65 | 2.36 | 0.500 | 0.500 | 3.28 | 1.591 | 4.62 | 1.875 | 4.50 | 1.22~1.61 | 11.24 | 9.06 | 4.60 | 6311ZZ | 6310ZZ |
| 286TS | 13.65 | 2.36 | 0.375 | 0.375 | 1.93 | 1.416 | 3.25 | 1.625 | 3.20 | 1.22~1.61 | 11.24 | 9.06 | 4.60 | 6311ZZC3 | 6310ZZC3 |

- NOTE: 1. Dimension D tolerance : +0.00 inches, -0.03 inches.
 2. Dimension U tolerance : +0.000 inches, -0.001 inches.
 3. Dimension R tolerance : +0.000 inches, -0.015 inches.
 4. Dimension V is length of straight part of shaft.

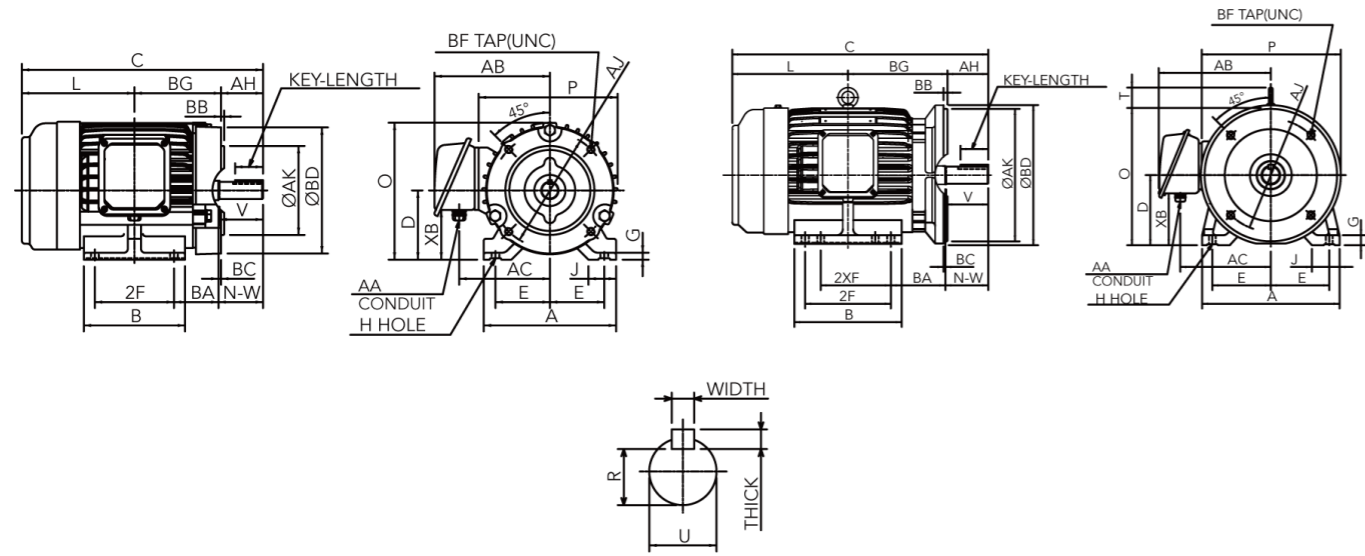


FIG.4

FIG.5

(Dimensions in mm)

| Output(HP) | | | FRAME SIZE | FIG. NO. | Mounting | | | | | A | B | C | D | G | J | L | O | P | T | AH | AJ | AK |
|------------|----------|----------|------------|----------|----------|--------|--------|------|------|------|-------|-------|------|------|------|------|------|------|------|-------|-------|------|
| 1200 rpm | 1800 rpm | 3600 rpm | | | E | 2F | 2XF | H | BA | | | | | | | | | | | | | |
| - | 1 | 1/1.5 | 143TC | FIG. 4 | 2.75 | 4.00 | - | 0.34 | 2.25 | 6.69 | 5.12 | 10.38 | 3.50 | 0.35 | 1.40 | 3.88 | 6.93 | 7.03 | - | 2.12 | 5.875 | 4.50 |
| 1 | 1.5/2 | 2 | 143TC | | 2.75 | 5.00 | - | 0.34 | 2.25 | 6.69 | 5.91 | 11.37 | 3.50 | 0.35 | 1.40 | 4.37 | 6.93 | 7.03 | - | 2.12 | 5.875 | 4.50 |
| 1.5 | 3 | 3 | 182TC | FIG. 5 | 3.75 | (5.50) | 4.50 | 0.41 | 3.50 | 8.82 | 6.89 | 14.35 | 4.50 | 0.64 | 1.77 | 5.35 | 8.81 | 8.92 | 1.31 | 2.62 | 7.250 | 8.50 |
| 2 | 5 | 5 | 184TC | | 3.75 | 5.50 | (4.50) | 0.41 | 3.50 | 8.82 | 6.89 | 14.35 | 4.50 | 0.64 | 1.77 | 5.35 | 8.81 | 8.92 | 1.31 | 2.62 | 7.250 | 8.50 |
| 3 | 7.5 | 7.5 | 213TC | | 4.25 | 7.00 | 5.50 | 0.41 | 4.25 | 9.84 | 8.35 | 19.65 | 5.25 | 0.69 | 1.77 | 8.52 | 9.56 | 8.98 | 1.63 | 3.12 | 7.250 | 8.50 |
| 5 | 10 | 10 | 215TC | 4.25 | 7.00 | 5.50 | 0.41 | 4.25 | 9.84 | 8.35 | 19.65 | 5.25 | 0.69 | 1.77 | 8.52 | 9.56 | 8.98 | 1.63 | 3.12 | 7.250 | 8.50 | |

| FRAME SIZE | BB | BC | BD | BF | | BG | Key | | | Keyseat R | Shaft Extension | | | Terminal Housing | | | | Bearing | |
|------------|------|------|------|-----|--------|------|-------|-------|--------|-----------|-----------------|-------|------|------------------|------|------|------|-----------|--------------------|
| | | | | NO. | SIZE | | WIDTH | THICK | LENGTH | | N-W | U | V | AA | AB | AC | XB | DRIVE END | OPPOSITE DRIVE END |
| 143TC | 0.16 | 0.13 | 6.40 | 4 | 3/8-16 | 4.38 | 0.188 | 0.188 | 1.41 | 0.771 | 2.25 | 0.875 | 2.20 | 0.27~0.47 | 5.84 | 4.59 | 2.52 | 6205ZZ | 6205ZZ |
| 143TC | 0.16 | 0.13 | 6.40 | 4 | 3/8-16 | 4.88 | 0.188 | 0.188 | 1.41 | 0.771 | 2.25 | 0.875 | 2.20 | 0.27~0.47 | 5.84 | 4.59 | 2.52 | 6205ZZ | 6205ZZ |
| 182TC | 0.25 | 0.13 | 9.00 | 4 | 1/2-13 | 6.38 | 0.250 | 0.250 | 1.78 | 0.986 | 2.75 | 1.125 | 2.70 | 0.27~0.47 | 7.19 | 5.81 | 3.33 | 6306ZZ | 6306ZZ |
| 184TC | 0.25 | 0.13 | 9.00 | 4 | 1/2-13 | 6.38 | 0.250 | 0.250 | 1.78 | 0.986 | 2.75 | 1.125 | 2.70 | 0.27~0.47 | 7.19 | 5.81 | 3.33 | 6306ZZ | 6306ZZ |
| 213TC | 0.25 | 0.26 | 9.00 | 4 | 1/2-13 | 8.01 | 0.312 | 0.312 | 2.41 | 1.201 | 3.38 | 1.375 | 3.30 | 0.71~0.98 | 7.93 | 6.18 | 3.32 | 6308ZZ | 6306ZZ |
| 215TC | 0.25 | 0.26 | 9.00 | 4 | 1/2-13 | 8.01 | 0.312 | 0.312 | 2.41 | 1.201 | 3.38 | 1.375 | 3.30 | 0.71~0.98 | 7.93 | 6.18 | 3.32 | 6308ZZ | 6306ZZ |

- NOTE: 1. Dimension D tolerance : +0.00 inches, -0.03 inches.
 2. Dimension AK tolerance of Frame 143TC-215TC : +0.000 inches, -0.003 inches.
 3. Dimension U tolerance of Frame 143TC-215TC : +0.000 inches, -0.0005 inches.
 4. Dimension R tolerance : +0.000 inches, -0.015 inches.
 5. Dimension V is length of straight part of shaft.

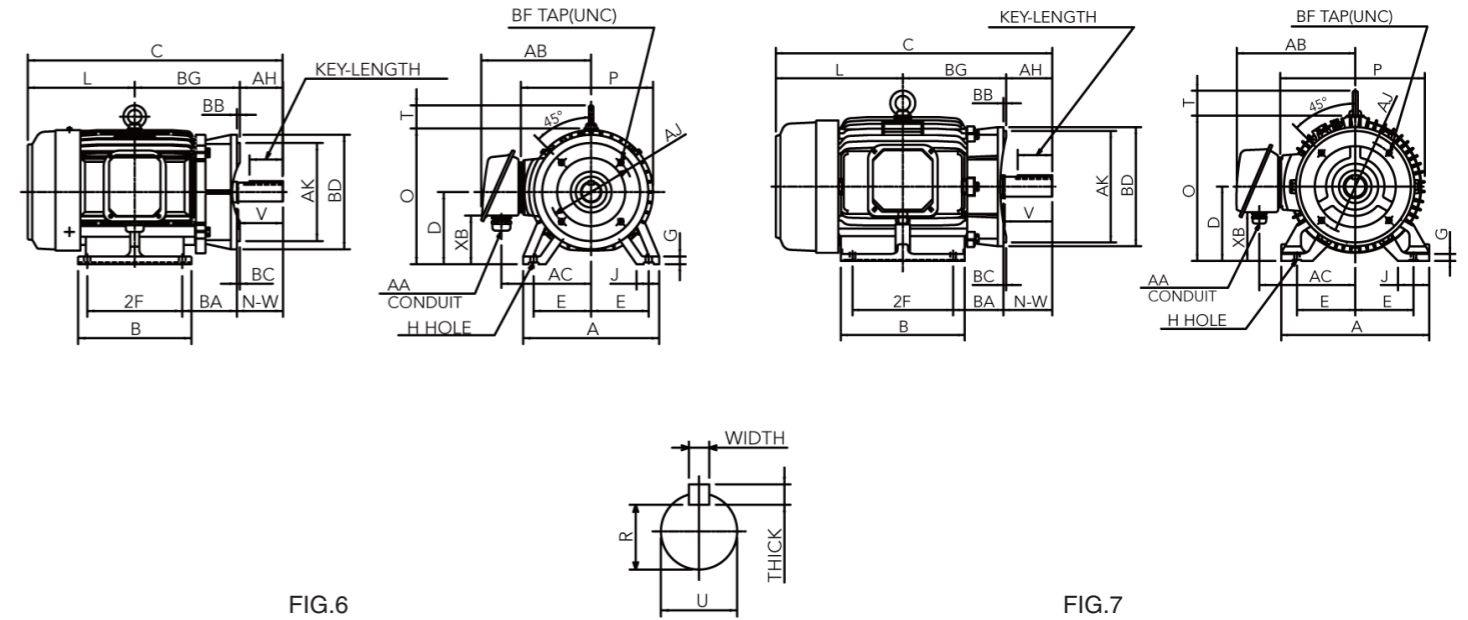


FIG.6

FIG.7

(Dimensions in mm)

| Output(HP) | | | FRAME SIZE | FIG. NO. | Mounting | | | | | A | B | C | D | G | J | L | O | P | T | AH | AJ | AK |
|------------|----------|----------|------------|----------|----------|-------|------|------|-------|-------|-------|-------|------|------|-------|-------|-------|-------|------|-------|-------|-------|
| 1200 rpm | 1800 rpm | 3600 rpm | | | E | 2F | 2XF | H | BA | | | | | | | | | | | | | |
| 7.5 | 15 | 15 | 254TC | FIG. 6 | 5.00 | 8.25 | - | 0.53 | 4.75 | 11.81 | 9.84 | 22.17 | 6.25 | 0.66 | 1.97 | 9.29 | 11.76 | 11.47 | 2.01 | 3.75 | 7.250 | 8.50 |
| 10 | 20 | 20 | 256TC | | 5.00 | 10.00 | - | 0.53 | 4.75 | 11.81 | 11.81 | 23.89 | 6.25 | 0.66 | 1.97 | 10.15 | 11.76 | 11.47 | 2.01 | 3.75 | 7.250 | 8.50 |
| 15 | 25 | - | 284TC | FIG. 7 | 5.50 | 9.50 | - | 0.53 | 4.75 | 13.98 | 11.69 | 26.11 | 7.00 | 0.78 | 2.95 | 11.99 | 13.69 | 13.65 | 2.36 | 4.37 | 9.000 | 10.50 |
| - | - | 25 | 284TSC | | 5.50 | 9.50 | - | 0.53 | 4.75 | 13.98 | 11.69 | 24.74 | 7.00 | 0.78 | 2.95 | 11.99 | 13.69 | 13.65 | 2.36 | 3.00 | 9.000 | 10.50 |
| 20 | 30 | - | 286TC | | 5.50 | 11.00 | - | 0.53 | 4.75 | 13.98 | 13.19 | 27.61 | 7.00 | 0.78 | 2.95 | 12.74 | 13.69 | 13.65 | 2.36 | 4.37 | 9.000 | 10.50 |
| - | - | 30 | 286TSC | 5.50 | 11.00 | - | 0.53 | 4.75 | 13.98 | 13.19 | 26.24 | 7.00 | 0.78 | 2.95 | 12.74 | 13.69 | 13.65 | 2.36 | 3.00 | 9.000 | 10.50 | |

| FRAME SIZE | BB | BC | BD | BF | | BG | Key | | | Keyseat R | Shaft Extension | | | Terminal Housing | | | | Bearing | |
|------------|------|------|-------|-----|--------|-------|-------|-------|--------|-----------|-----------------|-------|------|------------------|-------|------|------|-----------|--------------------|
| | | | | NO. | SIZE | | WIDTH | THICK | LENGTH | | N-W | U | V | AA | AB | AC | XB | DRIVE END | OPPOSITE DRIVE END |
| 254TC | 0.25 | 0.25 | 9.92 | 4 | 1/2-13 | 9.13 | 0.375 | 0.375 | 2.91 | 1.416 | 4.00 | 1.625 | 3.90 | 0.71~0.96 | 9.55 | 7.80 | 4.20 | 6309ZZ | 6307ZZ |
| 256TC | 0.25 | 0.25 | 9.92 | 4 | 1/2-13 | 9.99 | 0.375 | 0.375 | 2.91 | 1.416 | 4.00 | 1.625 | 3.90 | 0.71~0.96 | 9.55 | 7.80 | 4.20 | 6309ZZ | 6307ZZ |
| 284TC | 0.25 | 0.25 | 11.22 | 4 | 1/2-13 | 9.75 | 0.500 | 0.500 | 3.28 | 1.591 | 4.62 | 1.875 | 4.50 | 1.22~1.61 | 11.24 | 9.06 | 4.60 | 6311ZZ | 6310ZZ |
| 284TSC | 0.25 | 0.25 | 11.22 | 4 | 1/2-13 | 9.75 | 0.375 | 0.375 | 1.93 | 1.416 | 3.25 | 1.625 | 3.20 | 1.22~1.61 | 11.24 | 9.06 | 4.60 | 6311ZZC3 | 6310ZZC3 |
| 286TC | 0.25 | 0.25 | 11.22 | 4 | 1/2-13 | 10.50 | 0.500 | 0.500 | 3.28 | 1.591 | 4.62 | 1.875 | 4.50 | 1.22~1.61 | 11.24 | 9.06 | 4.60 | 6311C3 | 6310ZZ |
| 286TSC | 0.25 | 0.25 | 11.22 | 4 | 1/2-13 | 10.50 | 0.375 | 0.375 | 1.93 | 1.416 | 3.25 | 1.625 | 3.20 | 1.22~1.61 | 11.24 | 9.06 | 4.60 | 6311ZZC3 | 6310ZZC3 |

- NOTE: 1. Dimension D tolerance : +0.00 inches, -0.03 inches.
 2. Dimension AK tolerance of Frame 254TC-286TSC : +0.000 inches, -0.003 inches.
 3. Dimension U tolerance of Frame 254TC-286TSC : +0.000 inches, -0.001 inches.
 4. Dimension R tolerance : +0.000 inches, -0.015 inches.
 5. Dimension V is length of straight part of shaft.

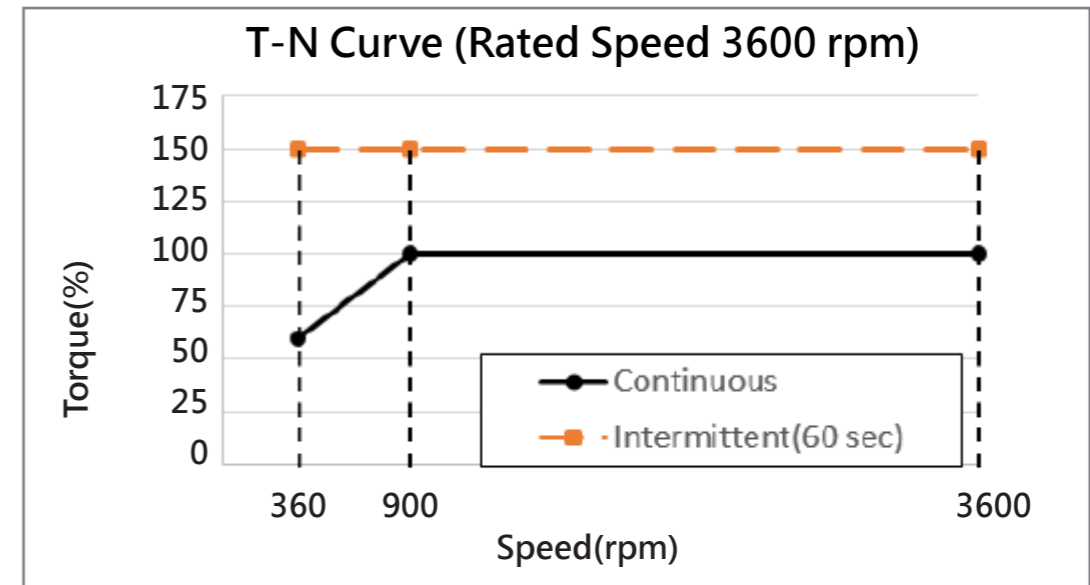
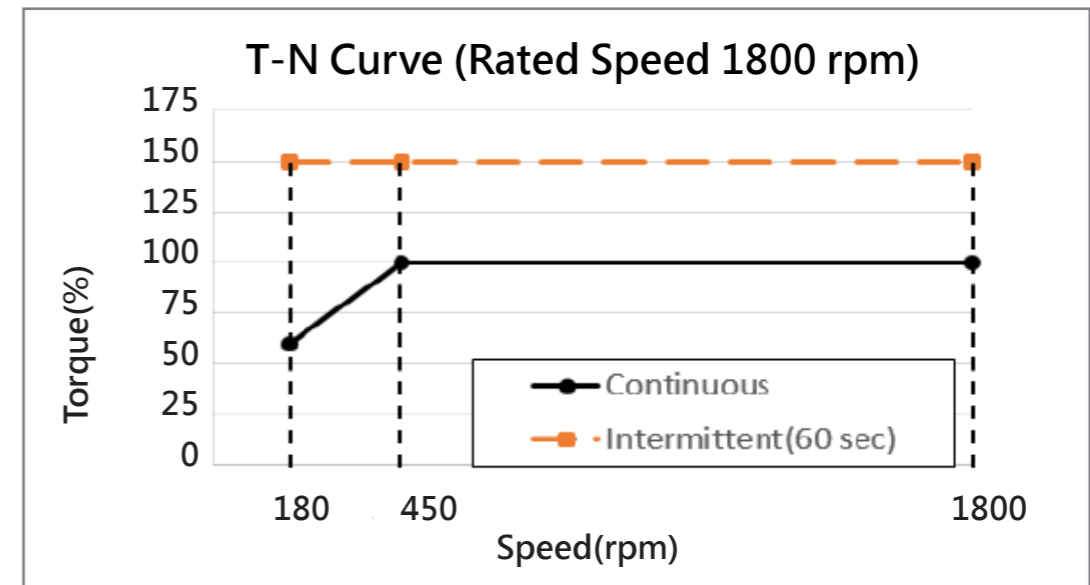
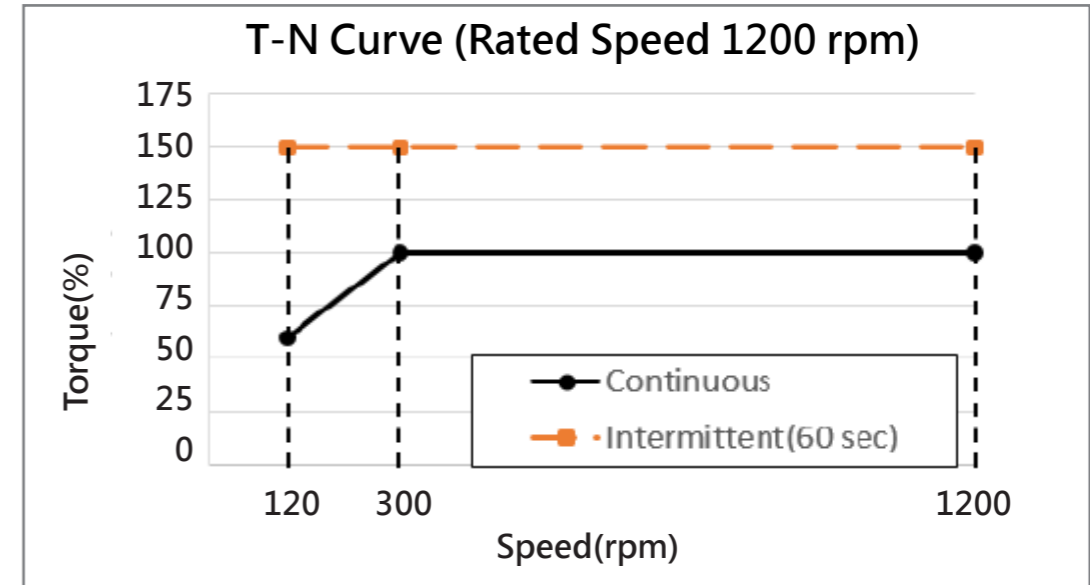
DVEZ Spec Sheet

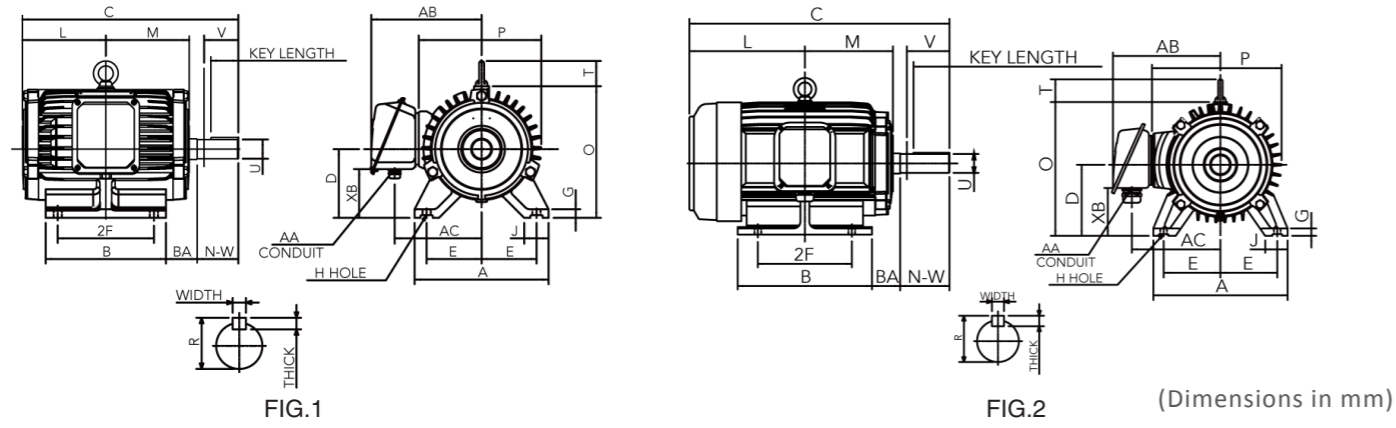
| | | |
|--------------|------------------------|--|
| RATING | Kind of Motor | Permanent Magnet Motor (PM Motor) |
| | Voltages | 230/460V |
| | Output Range | 1HP ~ 50HP |
| | R.P.M. (Syn.) | Rated 1200, 1800, 3600 R.P.M. |
| | Time Duty | Continuous, S.F. 1.0 (S1). |
| | Frame Nos. | 143T ~ 365T |
| | Protection Enclosure | Totally Enclosed (IP55). |
| | Cooling Method | 143T–184T: Totally Enclosed Non Ventilated (IC 410) 213T–365T: Self External Fan, Surface Cooling (IC 411) |
| | Mounting | Horizontal Foot Mounting F-1 (IM1001), F-2 Interchangeable |
| APPLICATION | Power Condition | Voltage: $\pm 10\%$, Frequency: $\pm 5\%$, AND $\pm 10\%$ of Combined Voltage and Frequency, But Frequency Variation Does Not Exceed $\pm 5\%$. |
| | Environment Conditions | Place: Shadow, Non-Hazardous. Ambient Temperature: $-20^{\circ}\text{C} \sim 40^{\circ}\text{C}$ Relative Humidity : Less Than 90%RH (Non-Condensation) Altitude: Less Than 3,300 ft |
| | Drive Method | Direct-Coupling Service |
| | Direction of Rotation | Bi-Directional |
| | Method of Starting | Controlled by Permanent Magnet Synchronous Motor Drive |
| CONSTRUCTION | Frame | High Grade Cast Iron With 2 Drain Holes at Bottom |
| | End Bracket (Shield) | High Grade Cast Iron. |
| | External Fan | Plastic. |
| | Fan Cover (Hood) | Pressed Steel. |
| | Shaft | Carbon Steel, Cylindrical Single Extension With Keyseat and Key. |
| | Bearing | Bracket Mounting, Vacuum De-Gassed High Quality Open Bearing for Frame Size of 324T(X) and 365T. Grease Pre-Packed Shielded Rolling Bearings for the Others. |
| | Lubricant | Mineral Oil, Li-Base Grease (MULTEMP SRL) |
| | Shaft Flinger | Rubber Flinger (V-Ring) |
| | Terminal Box | Pressed Steel, Larger Size, Can be set 90° Apart, with Clearance Hole Cable Entrance. |
| | Lead Terminal | 9 Leads with Solderless Lug Terminals |

DVEZ Spec Sheet

| | | |
|------------------|--------------------|---|
| CONSTRUCTION | Iron Core | High Grade, Insulated, Cold-Rolled Electro-Magnetic Steel Plate. |
| | Stator Winding | Pre-Formed, Random Wound, Made of Heavy, Heat-Resist Polyester Enameled Copper Wire. |
| | Stator Insulation | Class F Insulation System. |
| | Varnish Treatment | Phenolic Alkyd Resin Varnish, and Red Varnish Spray of Both Coil Ends. |
| | Rotor Structure | Permanent Magnet NdFeB |
| | Painting | Phenolic Rust Proof Base Plus Lacquer Surface Finished Painting in Green Color (Munsell 10GY 5/12). |
| | Name Plate | Stainless Steel Plate. |
| | Bolt Thread | ISO Metric System, |
| | Grounding Terminal | Be Set Inside the Terminal Box. |
| | PERFORMANCE | Temperature Rise |
| Over Torque | | 150% Rated Torque for 60 Sec. |
| Efficiency Level | | IE5 |

| OUTPUT | | RPM | FRAME NO. | P | Hz | TORQUE | | CURRENT | | INDUCED VOLTAGE CONSTANT (mV/rpm) | Eff. (%) | Weight (lb) |
|--------|-----|------|-----------|---|-----|---------------|--------------|--------------|-------------|-----------------------------------|----------|-------------|
| kW | HP | | | | | RATED (lb-ft) | MAX. (lb-ft) | RATED (Arms) | MAX. (Arms) | | | |
| 0.75 | 1 | 1200 | 145T | 6 | 60 | 4.4 | 6.6 | 1.5 | 2.3 | 258 | 85.7 | 42.0 |
| | | 1800 | 143T | 6 | 90 | 2.9 | 4.4 | 1.5 | 2.4 | 172 | 88.2 | 43.5 |
| | | 3600 | 143T | 6 | 180 | 1.5 | 2.2 | 1.5 | 2.3 | 89 | 86.3 | 33.0 |
| 1.1 | 1.5 | 1200 | 182T | 6 | 60 | 6.5 | 9.7 | 2.2 | 3.3 | 267 | 87.2 | 72.2 |
| | | 1800 | 145T | 6 | 90 | 4.3 | 6.5 | 2.3 | 3.5 | 169 | 89.5 | 42.0 |
| | | 3600 | 143T | 6 | 180 | 2.2 | 3.2 | 2.2 | 3.3 | 91 | 87.8 | 37.0 |
| 1.5 | 2 | 1200 | 184T | 6 | 60 | 8.8 | 13.2 | 2.9 | 4.4 | 267 | 88.4 | 69.2 |
| | | 1800 | 145T | 6 | 90 | 5.9 | 8.8 | 3.0 | 4.5 | 174 | 90.4 | 46.0 |
| | | 3600 | 145T | 6 | 180 | 2.9 | 4.4 | 3.0 | 4.5 | 91 | 88.9 | 36.7 |
| 2.2 | 3 | 1200 | 213T | 6 | 60 | 12.9 | 19.4 | 4.4 | 6.6 | 267 | 89.7 | 107.2 |
| | | 1800 | 182T | 6 | 90 | 8.6 | 12.9 | 4.5 | 6.8 | 181 | 91.4 | 79.2 |
| | | 3600 | 182T | 6 | 180 | 4.3 | 6.5 | 4.4 | 6.6 | 91 | 90.2 | 66.0 |
| 3.7 | 5 | 1200 | 215T | 6 | 60 | 21.7 | 32.6 | 7.0 | 10.5 | 274 | 91.2 | 115.0 |
| | | 1800 | 184T | 6 | 90 | 14.5 | 21.7 | 7.0 | 10.5 | 181 | 92.6 | 90.0 |
| | | 3600 | 184T | 6 | 180 | 7.2 | 10.9 | 7.1 | 10.7 | 90 | 91.6 | 69.2 |
| 5.5 | 7.5 | 1200 | 254T | 6 | 60 | 32.3 | 48.4 | 10.2 | 15.3 | 275 | 92.2 | 176.0 |
| | | 1800 | 213T | 6 | 90 | 21.5 | 32.3 | 10.0 | 15.0 | 190 | 93.4 | 131.7 |
| | | 3600 | 213T | 6 | 180 | 10.8 | 16.1 | 11.0 | 16.5 | 94 | 92.6 | 94.8 |
| 7.5 | 10 | 1200 | 256T | 6 | 60 | 44.0 | 66.0 | 14.5 | 21.8 | 272 | 92.9 | 215.7 |
| | | 1800 | 215T | 6 | 90 | 29.3 | 44.0 | 14.0 | 21.0 | 189 | 94.0 | 128.2 |
| | | 3600 | 215T | 6 | 180 | 14.7 | 22.0 | 14.0 | 21.0 | 102 | 93.3 | 106.7 |
| 11 | 15 | 1200 | 284T | 6 | 60 | 64.6 | 96.8 | 20.0 | 30.0 | 286 | 93.7 | 299.0 |
| | | 1800 | 254T | 6 | 90 | 43.0 | 64.6 | 19.0 | 28.5 | 196 | 94.6 | 225.7 |
| | | 3600 | 254T | 6 | 180 | 21.5 | 32.3 | 20.0 | 30.0 | 103 | 94.0 | 162.8 |
| 15 | 20 | 1200 | 286T | 6 | 60 | 88.0 | 132.1 | 26.5 | 39.8 | 297 | 94.3 | 365.1 |
| | | 1800 | 256T | 6 | 90 | 58.7 | 88.0 | 28.0 | 42.0 | 188 | 95.1 | 267.0 |
| | | 3600 | 256T | 6 | 180 | 29.3 | 44.0 | 28.0 | 42.0 | 106 | 94.5 | 186.1 |
| 18.5 | 25 | 1200 | 324T(X) | 6 | 60 | 108.6 | 162.9 | 33.5 | 50.3 | 272 | 94.6 | 447.5 |
| | | 1800 | 284T | 6 | 90 | 72.4 | 108.6 | 33.0 | 49.5 | 201 | 95.3 | 338.0 |
| | | 3600 | 284TS | 6 | 180 | 36.2 | 54.3 | 33.5 | 50.3 | 104 | 94.9 | 266.9 |
| 22 | 30 | 1200 | 326T(X) | 6 | 60 | 129.1 | 193.7 | 44.0 | 66.0 | 273 | 94.9 | 469.6 |
| | | 1800 | 286T | 6 | 90 | 86.1 | 129.1 | 42.0 | 63.0 | 186 | 95.3 | 365.0 |
| | | 3600 | 286TS | 6 | 180 | 43.0 | 64.6 | 39.5 | 59.3 | 104 | 95.1 | 312.2 |
| 30 | 40 | 1200 | 364T | 8 | 80 | 176.1 | 264.1 | 52.0 | 83.2 | 285 | 95.3 | 721.2 |
| 37 | 50 | 1200 | 365T | 8 | 80 | 217.2 | 325.7 | 62.2 | 99.5 | 274 | 95.6 | 745.2 |

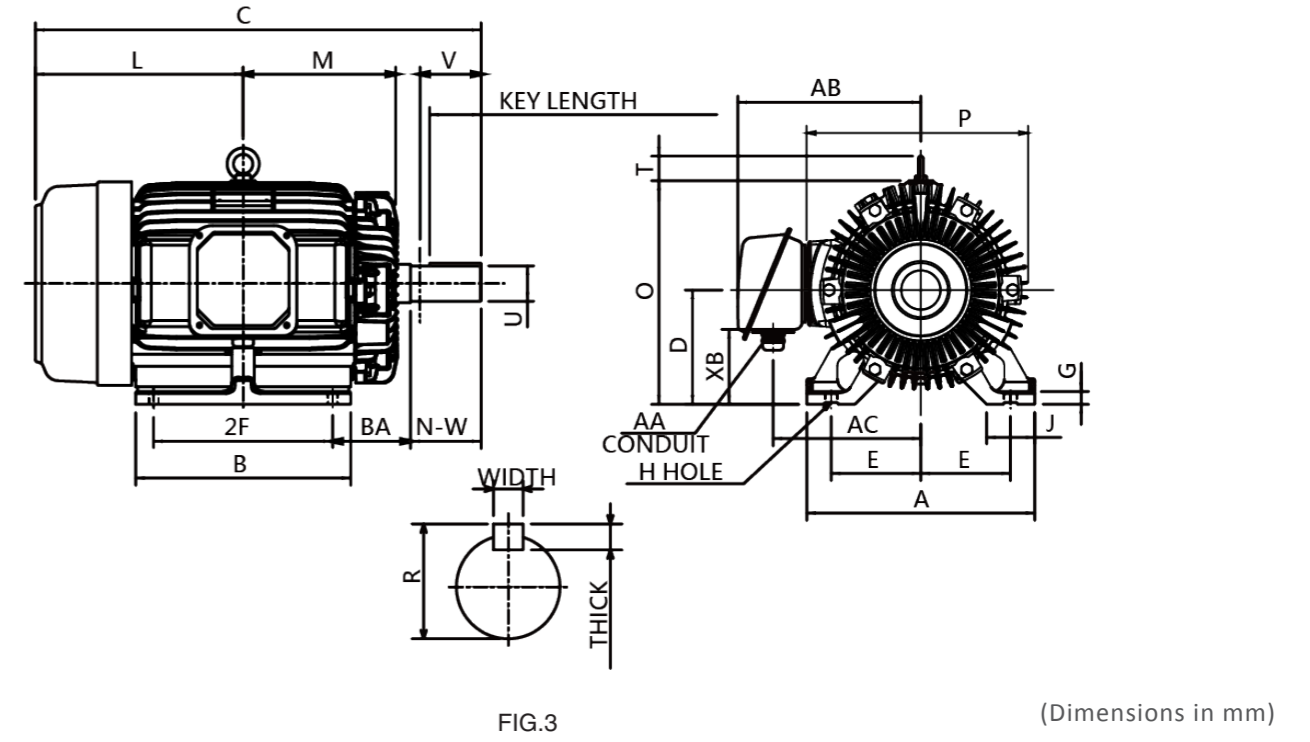




| Output(HP) | | | FRAME SIZE | FIG. NO. | Mounting | | | | A | B | C | D | G | J | L | M | O |
|------------|----------|----------|------------|----------|----------|-------|------|------|-------|-------|-------|------|------|------|-------|------|-------|
| 1200 rpm | 1800 rpm | 3600 rpm | | | E | 2F | H | BA | | | | | | | | | |
| - | 1 | 1/1.5 | 143T | FIG.1 | 2.75 | 4.00 | 0.34 | 2.25 | 6.69 | 5.12 | 10.38 | 3.50 | 0.35 | 1.40 | 3.88 | 3.88 | 6.93 |
| 1 | 1.5/2 | 2 | 145T | | 2.75 | 5.00 | 0.34 | 2.25 | 6.69 | 5.91 | 11.37 | 3.50 | 0.35 | 1.40 | 4.37 | 4.37 | 6.93 |
| 1.5 | 3 | 3 | 182T | | 3.75 | 4.50 | 0.41 | 2.75 | 8.82 | 5.88 | 12.59 | 4.50 | 0.64 | 1.77 | 4.84 | 4.84 | 8.81 |
| 2 | 5 | 5 | 184T | | 3.75 | 5.50 | 0.41 | 2.75 | 8.82 | 6.89 | 13.60 | 4.50 | 0.64 | 1.77 | 5.35 | 5.35 | 8.81 |
| 3 | 7.5 | 7.5 | 213T | FIG.2 | 4.25 | 5.5Z0 | 0.41 | 3.50 | 9.84 | 7.56 | 17.76 | 5.25 | 0.69 | 1.77 | 8.13 | 6.06 | 9.56 |
| 5 | 10 | 10 | 215T | | 4.25 | 7.00 | 0.41 | 3.50 | 9.84 | 8.35 | 18.90 | 5.25 | 0.69 | 1.77 | 8.52 | 6.46 | 9.56 |
| 7.5 | 15 | 15 | 254T | | 5.00 | 8.25 | 0.53 | 4.25 | 11.81 | 9.84 | 21.67 | 6.25 | 0.66 | 1.97 | 9.29 | 6.89 | 11.76 |
| 10 | 20 | 20 | 256T | | 5.00 | 10.00 | 0.53 | 4.25 | 11.81 | 11.81 | 23.40 | 6.25 | 0.66 | 1.97 | 10.15 | 7.76 | 11.76 |

| FRAME SIZE | P | T | Mounting | | | Keyseat R | Shaft Extension | | | Terminal Housing | | | | Bearing | |
|------------|-------|------|----------|-------|--------|-----------|-----------------|-------|------|------------------|------|------|------|-----------|--------------------|
| | | | WIDTH | THICK | LENGTH | | N-W | U | V | AA | AB | AC | XB | DRIVE END | OPPOSITE DRIVE END |
| 143T | 7.03 | - | 0.188 | 0.188 | 1.41 | 0.771 | 2.25 | 0.875 | 2.20 | 0.27~0.47 | 5.84 | 4.59 | 2.52 | 6205ZZ | 6205ZZ |
| 145T | 7.03 | - | 0.188 | 0.188 | 1.41 | 0.771 | 2.25 | 0.875 | 2.20 | 0.27~0.47 | 5.84 | 4.59 | 2.52 | 6205ZZ | 6205ZZ |
| 182T | 8.74 | 1.31 | 0.250 | 0.250 | 1.78 | 0.986 | 2.75 | 1.125 | 2.70 | 0.27~0.47 | 7.19 | 5.81 | 3.33 | 6306ZZ | 6306ZZ |
| 184T | 8.74 | 1.31 | 0.250 | 0.250 | 1.78 | 0.986 | 2.75 | 1.125 | 2.70 | 0.27~0.47 | 7.19 | 5.81 | 3.33 | 6306ZZ | 6306ZZ |
| 213T | 8.79 | 1.63 | 0.312 | 0.312 | 2.41 | 1.201 | 3.38 | 1.375 | 3.30 | 0.71~0.98 | 7.93 | 6.18 | 3.32 | 6308ZZ | 6306ZZ |
| 215T | 8.79 | 1.63 | 0.312 | 0.312 | 2.41 | 1.201 | 3.38 | 1.375 | 3.30 | 0.71~0.98 | 7.93 | 6.18 | 3.32 | 6308ZZ | 6306ZZ |
| 254T | 11.47 | 2.01 | 0.375 | 0.375 | 2.91 | 1.416 | 4.00 | 1.625 | 3.90 | 0.71~0.98 | 9.55 | 7.80 | 4.20 | 6309ZZ | 6307ZZ |
| 256T | 11.47 | 2.01 | 0.375 | 0.375 | 2.91 | 1.416 | 4.00 | 1.625 | 3.90 | 0.71~0.98 | 9.55 | 7.80 | 4.20 | 6309ZZ | 6307ZZ |

NOTE: 1. Dimension D tolerance : +0.00 inches, -0.03 inches.
 2. Dimension U tolerance of Frame 143T~215T : +0.000 inches, -0.0005 inches.
 3. Dimension U tolerance of Frame 254T~256T : +0.000 inches, -0.001 inches.
 4. Dimension R tolerance : +0.000 inches, -0.015 inches.
 5. Dimension V is length of straight part of shaft.



| Output(HP) | | | FRAME SIZE | FIG. NO. | Mounting | | | | A | B | C | D | G | J | L | M | O |
|------------|----------|----------|------------|----------|----------|-------|------|------|-------|-------|-------|------|------|------|-------|------|-------|
| 1200 rpm | 1800 rpm | 3600 rpm | | | E | 2F | H | BA | | | | | | | | | |
| 15 | 25 | - | 284T | FIG.3 | 5.50 | 9.50 | 0.53 | 4.75 | 13.98 | 11.69 | 26.11 | 7.00 | 0.78 | 2.95 | 11.99 | 8.60 | 13.69 |
| - | - | 25 | 284TS | | 5.50 | 9.50 | 0.53 | 4.75 | 13.98 | 11.69 | 24.74 | 7.00 | 0.78 | 2.95 | 11.99 | 8.60 | 13.69 |
| 20 | 30 | - | 286T | | 5.50 | 11.00 | 0.53 | 4.75 | 13.98 | 13.19 | 27.61 | 7.00 | 0.78 | 2.95 | 12.74 | 9.35 | 13.69 |
| - | - | 30 | 286TS | | 5.50 | 11.00 | 0.53 | 4.75 | 13.98 | 13.19 | 26.24 | 7.00 | 0.78 | 2.95 | 12.74 | 9.35 | 13.69 |

| T | Mounting | | | Keyseat R | Shaft Extension | | | Terminal Housing | | | | Bearing | |
|------|----------|-------|--------|-----------|-----------------|-------|------|------------------|-------|------|------|-----------|--------------------|
| | WIDTH | THICK | LENGTH | | N-W | U | V | AA | AB | AC | XB | DRIVE END | OPPOSITE DRIVE END |
| 2.36 | 0.500 | 0.500 | 3.28 | 1.591 | 4.62 | 1.875 | 4.50 | 1.22~1.61 | 11.24 | 9.06 | 4.60 | 6311ZZ | 6310ZZ |
| 2.36 | 0.375 | 0.375 | 1.93 | 1.416 | 3.25 | 1.625 | 3.20 | 1.22~1.61 | 11.24 | 9.06 | 4.60 | 6311ZZC3 | 6310ZZC3 |
| 2.36 | 0.500 | 0.500 | 3.28 | 1.591 | 4.62 | 1.875 | 4.50 | 1.22~1.61 | 11.24 | 9.06 | 4.60 | 6311ZZ | 6310ZZ |
| 2.36 | 0.375 | 0.375 | 1.93 | 1.416 | 3.25 | 1.625 | 3.20 | 1.22~1.61 | 11.24 | 9.06 | 4.60 | 6311ZZC3 | 6310ZZC3 |

NOTE: 1. Dimension D tolerance : +0.00 inches, -0.03 inches.
 2. Dimension U tolerance : +0.000 inches, -0.001 inches.
 3. Dimension R tolerance : +0.000 inches, -0.015 inches.
 4. Dimension V is length of straight part of shaft.

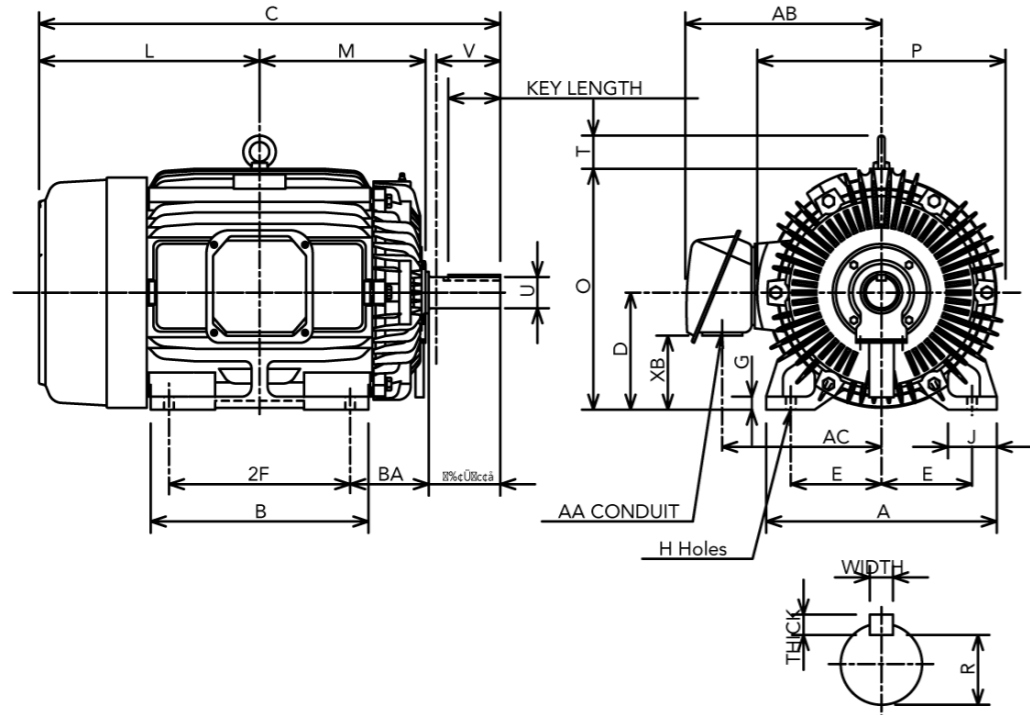


FIG.4 (Dimensions in mm)

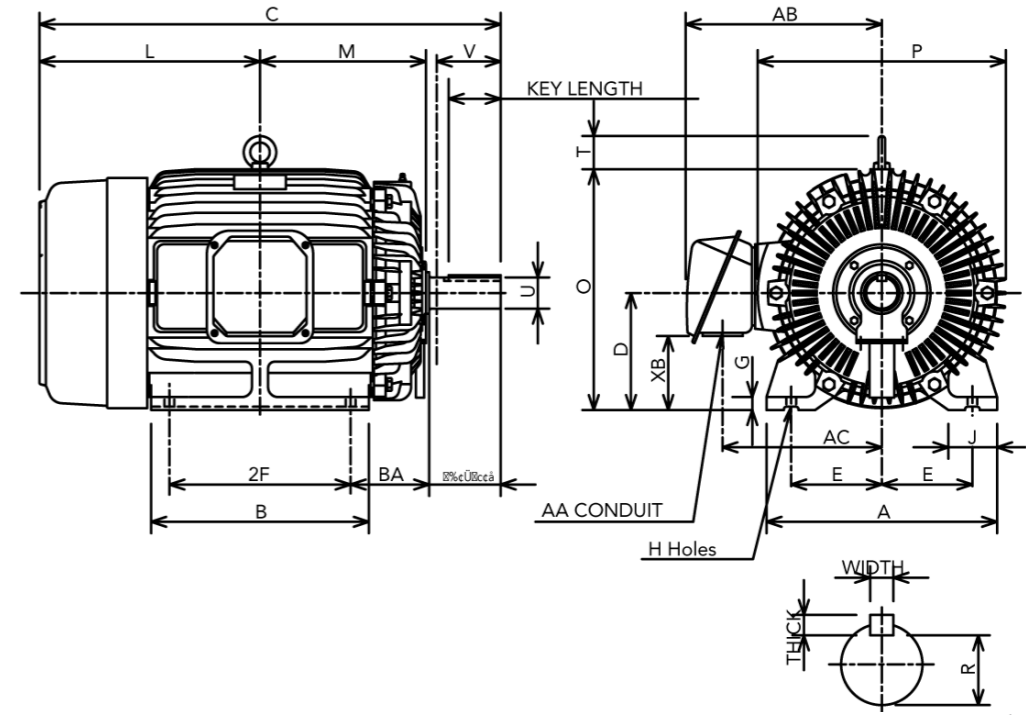


FIG.5 (Dimensions in mm)

| Output(HP) | | | FRAME SIZE | FIG. NO. | Mounting | | | | A | B | C | D | G | J | L | M | O |
|------------|----------|----------|------------|----------|----------|-------|------|------|-------|-------|-------|------|------|------|-------|-------|-------|
| 1200 rpm | 1800 rpm | 3600 rpm | | | E | 2F | H | BA | | | | | | | | | |
| 25 | - | - | 324T(X) | FIG.4 | 6.25 | 10.50 | 0.67 | 5.25 | 15.75 | 12.87 | 29.43 | 8.00 | 1.10 | 3.15 | 13.68 | 10.22 | 15.50 |
| 30 | - | - | 326T(X) | | 6.25 | 12.00 | 0.67 | 5.25 | 15.75 | 14.37 | 30.93 | 8.00 | 1.10 | 3.15 | 14.43 | 10.96 | 15.50 |

| Output(HP) | | | FRAME SIZE | FIG. NO. | Mounting | | | | A | B | C | D | G | J | L | M | O |
|------------|----------|----------|------------|----------|----------|-------|------|------|-------|-------|-------|------|------|------|-------|-------|-------|
| 1200 rpm | 1800 rpm | 3600 rpm | | | E | 2F | H | BA | | | | | | | | | |
| 40 | - | - | 364T | FIG.5 | 7.00 | 11.25 | 0.67 | 5.88 | 17.72 | 13.78 | 32.51 | 9.00 | 1.30 | 3.54 | 15.13 | 11.29 | 18.13 |
| 50 | - | - | 365 | | 7.00 | 11.25 | 0.67 | 5.88 | 17.72 | 13.78 | 33.55 | 9.00 | 1.30 | 3.54 | 15.67 | 11.29 | 18.13 |

| FRAME SIZE | P | T | Mounting | | | Keyseat | Shaft Extension | | | Terminal Housing | | | | Bearing | |
|------------|-------|------|----------|-------|--------|---------|-----------------|-------|------|------------------|-------|-------|------|-----------|--------------------|
| | | | WIDTH | THICK | LENGTH | R | N-W | U | V | AA | AB | AC | XB | DRIVE END | OPPOSITE DRIVE END |
| 324T(X) | 15.91 | 2.36 | 0.500 | 0.500 | 3.91 | 1.845 | 5.25 | 2.125 | 5.15 | 1.73~2.01 | 13.47 | 10.98 | 5.19 | 6312 | 6310 |
| 326T(X) | 15.91 | 2.36 | 0.500 | 0.500 | 3.91 | 1.845 | 5.25 | 2.125 | 5.15 | 1.73~2.01 | 13.47 | 10.98 | 5.19 | 6312 | 6310 |

| FRAME SIZE | P | T | Mounting | | | Keyseat | Shaft Extension | | | Terminal Housing | | | | Bearing | |
|------------|-------|------|----------|-------|--------|---------|-----------------|-------|------|------------------|-------|-------|------|-----------|--------------------|
| | | | WIDTH | THICK | LENGTH | R | N-W | U | V | AA | AB | AC | XB | DRIVE END | OPPOSITE DRIVE END |
| 364T | 18.03 | 2.76 | 0.625 | 0.625 | 4.28 | 2.021 | 5.88 | 2.375 | 5.75 | 1.73~2.01 | 15.10 | 12.28 | 6.18 | 6313 | 6313 |
| 365 | 18.03 | 2.76 | 0.625 | 0.625 | 4.28 | 2.021 | 5.88 | 2.375 | 5.75 | 1.73~2.01 | 15.10 | 12.28 | 6.18 | 6313 | 6313 |

NOTE: 1. Dimension D tolerance : +0.00 inches, -0.03 inches.
 2. Dimension U tolerance : +0.000 inches, -0.001 inches.
 3. Dimension R tolerance : +0.000 inches, -0.015 inches.
 4. Dimension V is length of straight part of shaft.

NOTE: 1. Dimension D tolerance : +0.00 inches, -0.03 inches.
 2. Dimension U tolerance : +0.000 inches, -0.001 inches.
 3. Dimension R tolerance : +0.000 inches, -0.015 inches.
 4. Dimension V is length of straight part of shaft.

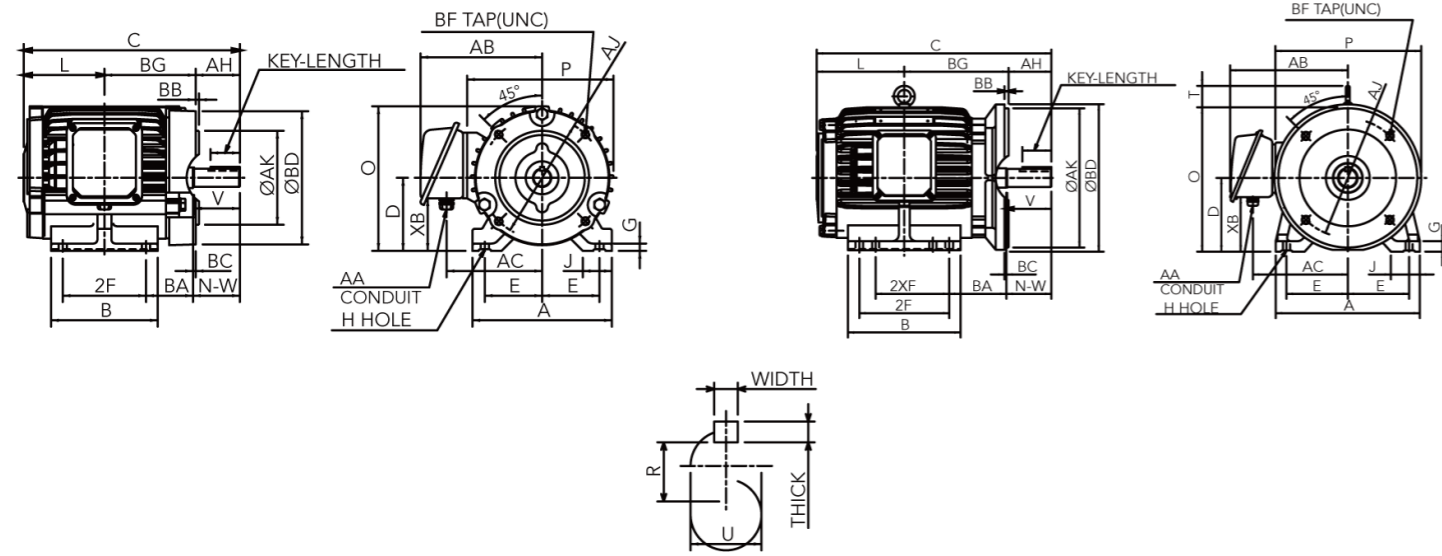


FIG.6

FIG.7

(Dimensions in mm)

| Output(HP) | | | FRAME SIZE | FIG. NO. | Mounting | | | | | A | B | C | D | G | J | L | O | P | T | AH | AJ | AK |
|------------|----------|----------|------------|----------|----------|--------|--------|------|------|------|------|-------|------|------|------|------|------|------|------|------|-------|------|
| 1200 rpm | 1800 rpm | 3600 rpm | | | E | 2F | 2XF | H | BA | | | | | | | | | | | | | |
| - | 1 | 1/1.5 | 143TC | FIG. 6 | 2.75 | 4.00 | - | 0.34 | 2.25 | 6.69 | 5.12 | 10.38 | 3.50 | 0.35 | 1.40 | 3.88 | 6.93 | 7.03 | - | 2.12 | 5.875 | 4.50 |
| 1 | 1.5/2 | 2 | 143TC | | 2.75 | 5.00 | - | 0.34 | 2.25 | 6.69 | 5.91 | 11.37 | 3.50 | 0.35 | 1.40 | 4.37 | 6.93 | 7.03 | - | 2.12 | 5.875 | 4.50 |
| 1.5 | 3 | 3 | 182TC | FIG. 7 | 3.75 | (5.50) | 4.50 | 0.41 | 3.50 | 8.82 | 6.89 | 14.35 | 4.50 | 0.64 | 1.77 | 5.35 | 8.81 | 8.92 | 1.31 | 2.62 | 7.250 | 8.50 |
| 2 | 5 | 5 | 184TC | | 3.75 | 5.50 | (4.50) | 0.41 | 3.50 | 8.82 | 6.89 | 14.35 | 4.50 | 0.64 | 1.77 | 5.35 | 8.81 | 8.92 | 1.31 | 2.62 | 7.250 | 8.50 |

| FRAME SIZE | BB | BC | BD | BF | | BG | Key | | | Keyseat R | Shaft Extension | | | Terminal Housing | | | | Bearing | |
|------------|------|------|------|-----|--------|------|-------|-------|--------|-----------|-----------------|-------|------|------------------|------|------|------|-----------|--------------------|
| | | | | NO. | SIZE | | WIDTH | THICK | LENGTH | | N-W | U | V | AA | AB | AC | XB | DRIVE END | OPPOSITE DRIVE END |
| 143TC | 0.16 | 0.13 | 6.40 | 4 | 3/8-16 | 4.38 | 0.188 | 0.188 | 1.41 | 0.771 | 2.25 | 0.875 | 2.20 | 0.27~0.47 | 5.84 | 4.59 | 2.52 | 6205ZZ | 6205ZZ |
| 143TC | 0.16 | 0.13 | 6.40 | 4 | 3/8-16 | 4.88 | 0.188 | 0.188 | 1.41 | 0.771 | 2.25 | 0.875 | 2.20 | 0.27~0.47 | 5.84 | 4.59 | 2.52 | 6205ZZ | 6205ZZ |
| 182TC | 0.25 | 0.13 | 6.40 | 4 | 1/2-13 | 6.38 | 0.250 | 0.250 | 1.78 | 0.986 | 2.75 | 1.125 | 2.70 | 0.27~0.47 | 7.19 | 5.81 | 3.33 | 6306ZZ | 6306ZZ |
| 184TC | 0.25 | 0.13 | 6.40 | 4 | 1/2-13 | 6.38 | 0.250 | 0.250 | 1.78 | 0.986 | 2.75 | 1.125 | 2.70 | 0.27~0.47 | 7.19 | 5.81 | 3.33 | 6306ZZ | 6306ZZ |

- NOTE: 1. Dimension D tolerance : +0.00 inches, -0.03 inches.
 2. Dimension AK tolerance of Frame 143TC-215TC : +0.000 inches, -0.003 inches.
 3. Dimension U tolerance of Frame 143TC-215TC : +0.000 inches, -0.0005 inches.
 4. Dimension R tolerance : +0.000 inches, -0.015 inches.
 5. Dimension V is length of straight part of shaft.

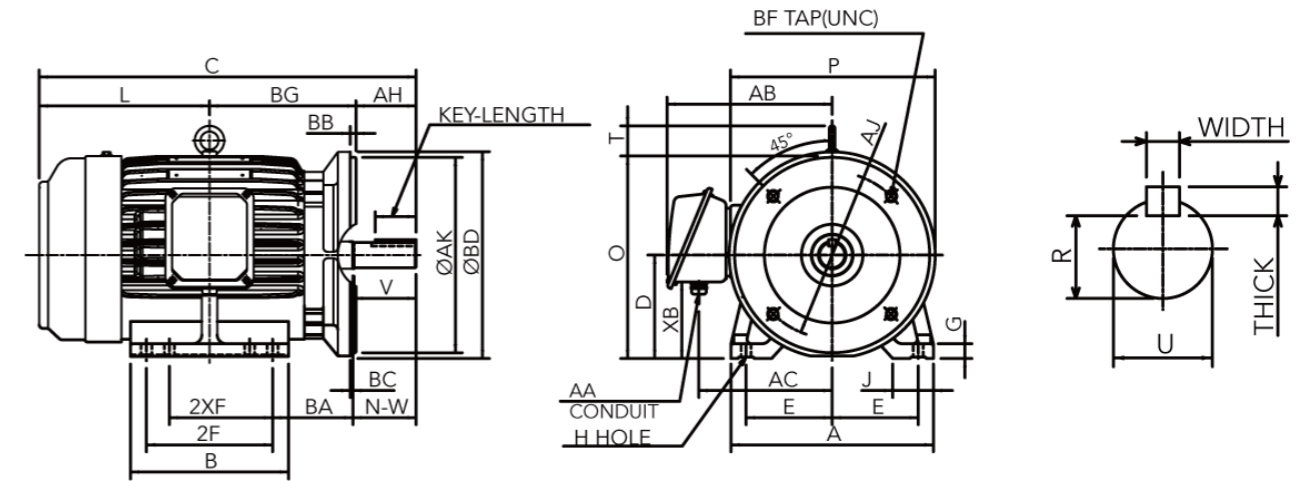


FIG.8

(Dimensions in mm)

| Output(HP) | | | FRAME SIZE | FIG. NO. | Mounting | | | | | A | B | C | D | G | J | L | O | P | T | AH | AJ | AK |
|------------|----------|----------|------------|----------|----------|--------|--------|------|------|-------|-------|-------|------|------|------|-------|-------|-------|------|------|-------|-------|
| 1200 rpm | 1800 rpm | 3600 rpm | | | E | 2F | 2XF | H | BA | | | | | | | | | | | | | |
| 3 | 7.5 | 7.5 | 213TC | FIG. 8 | 4.25 | (7.00) | 5.50 | 0.41 | 4.25 | 9.84 | 8.35 | 19.65 | 5.25 | 0.69 | 1.77 | 8.52 | 9.56 | 8.98 | 1.63 | 3.12 | 7.250 | 8.50 |
| 5 | 10 | 10 | 215TC | | 4.25 | 7.00 | (5.50) | 0.41 | 4.25 | 9.84 | 8.35 | 19.65 | 5.25 | 0.69 | 1.77 | 8.52 | 9.56 | 8.98 | 1.63 | 3.12 | 7.250 | 8.50 |
| 7.5 | 15 | 15 | 254TC | | 5.00 | 8.25 | - | 0.53 | 4.75 | 11.81 | 9.84 | 22.17 | 6.25 | 0.66 | 1.97 | 9.29 | 11.76 | 11.47 | 2.01 | 3.75 | 7.250 | 8.50 |
| 10 | 20 | 20 | 256TC | | 5.00 | 10.00 | - | 0.53 | 4.75 | 11.81 | 11.81 | 23.89 | 6.25 | 0.66 | 1.97 | 10.15 | 11.76 | 11.47 | 2.01 | 3.75 | 7.250 | 8.50 |
| 15 | 25 | - | 284TC | | 5.50 | 9.50 | - | 0.53 | 4.75 | 11.69 | 11.69 | 26.11 | 7.00 | 0.78 | 2.95 | 11.99 | 13.69 | 13.65 | 2.36 | 4.37 | 9.000 | 10.50 |
| - | - | 25 | 284TSC | | 5.50 | 9.50 | - | 0.53 | 4.75 | 11.69 | 11.69 | 24.74 | 7.00 | 0.78 | 2.95 | 11.99 | 13.69 | 13.65 | 2.36 | 3.00 | 9.000 | 10.50 |
| 20 | 30 | - | 286TC | | 5.50 | 11.00 | - | 0.53 | 4.75 | 13.19 | 13.19 | 27.61 | 7.00 | 0.78 | 2.95 | 12.74 | 13.69 | 13.65 | 2.36 | 4.37 | 9.000 | 10.50 |
| - | - | 30 | 286TSC | | 5.50 | 11.00 | - | 0.53 | 4.75 | 13.19 | 13.19 | 26.24 | 7.00 | 0.78 | 2.95 | 12.74 | 13.69 | 13.65 | 2.36 | 3.00 | 9.000 | 10.50 |

| FRAME SIZE | BB | BC | BD | BF | | BG | Key | | | Keyseat R | Shaft Extension | | | Terminal Housing | | | | Bearing | |
|------------|------|------|-------|-----|--------|-------|-------|-------|--------|-----------|-----------------|-------|------|------------------|-------|------|------|-----------|--------------------|
| | | | | NO. | SIZE | | WIDTH | THICK | LENGTH | | N-W | U | V | AA | AB | AC | XB | DRIVE END | OPPOSITE DRIVE END |
| 213TC | 0.25 | 0.26 | 9.00 | 4 | 1/2-13 | 8.01 | 0.312 | 0.312 | 2.41 | 1.201 | 3.38 | 1.375 | 3.30 | 0.71~0.98 | 7.93 | 6.18 | 3.32 | 6308ZZ | 6306ZZ |
| 215TC | 0.25 | 0.26 | 9.00 | 4 | 1/2-13 | 8.01 | 0.312 | 0.312 | 2.41 | 1.201 | 3.38 | 1.375 | 3.30 | 0.71~0.98 | 7.93 | 6.18 | 3.32 | 6308ZZ | 6306ZZ |
| 254TC | 0.25 | 0.25 | 9.92 | 4 | 1/2-13 | 9.13 | 0.375 | 0.375 | 2.91 | 1.416 | 4.00 | 1.625 | 3.90 | 0.71~0.98 | 9.55 | 7.80 | 4.20 | 6309ZZ | 6307ZZ |
| 256TC | 0.25 | 0.25 | 9.92 | 4 | 1/2-13 | 9.99 | 0.375 | 0.375 | 2.91 | 1.416 | 4.00 | 1.625 | 3.90 | 0.71~0.98 | 9.55 | 7.80 | 4.20 | 6309ZZ | 6307ZZ |
| 284TC | 0.25 | 0.25 | 11.22 | 4 | 1/2-13 | 9.75 | 0.500 | 0.500 | 3.28 | 1.591 | 4.62 | 1.875 | 4.50 | 1.22~1.61 | 11.24 | 9.06 | 4.60 | 6311ZZ | 6310ZZ |
| 284TSC | 0.25 | 0.25 | 11.22 | 4 | 1/2-13 | 9.75 | 0.375 | 0.375 | 1.93 | 1.416 | 3.25 | 1.625 | 3.20 | 1.22~1.61 | 11.24 | 9.06 | 4.60 | 6311ZZC3 | 6310ZZC3 |
| 286TC | 0.25 | 0.25 | 11.22 | 4 | 1/2-13 | 10.50 | 0.500 | 0.500 | 3.28 | 1.591 | 4.62 | 1.875 | 4.50 | 1.22~1.61 | 11.24 | 9.06 | 4.60 | 6311ZZ | 6310ZZ |
| 286TSC | 0.25 | 0.25 | 11.22 | 4 | 1/2-13 | 10.50 | 0.375 | 0.375 | 1.93 | 1.416 | 3.25 | 1.625 | 3.20 | 1.22~1.61 | 11.24 | 9.06 | 4.60 | 6311ZZC3 | 6310ZZC3 |

- NOTE: 1. Dimension D tolerance : +0.00 inches, -0.03 inches.
 2. Dimension AK tolerance of Frame 254TC-286TC : +0.000 inches, -0.003 inches.
 3. Dimension U tolerance of Frame 254TC-286TC : +0.000 inches, -0.001 inches.
 4. Dimension R tolerance : +0.000 inches, -0.015 inches.
 5. Dimension V is length of straight part of shaft.

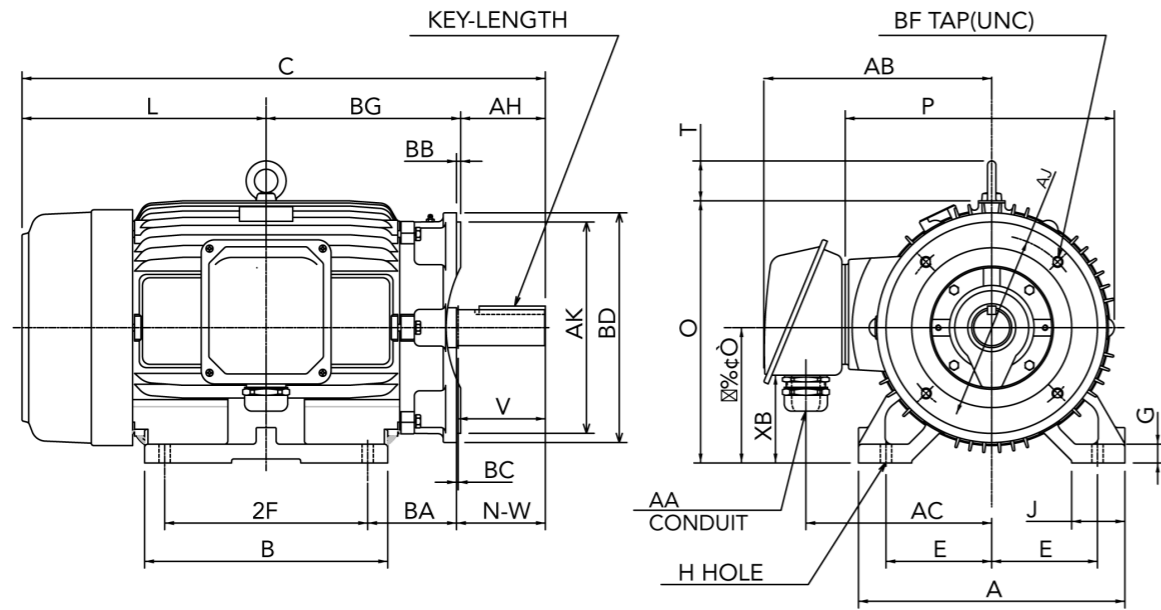


FIG.9

(Dimensions in mm)

| Output(HP) | | | FRAME SIZE | FIG. NO. | Mounting | | | | | A | B | C | D | G | J | L | O | P | T | AH | AJ | AK |
|------------|----------|----------|------------|----------|----------|------|-----|------|------|-------|-------|-------|---|------|------|-------|------|-------|------|----|----|------|
| 1200 rpm | 1800 rpm | 3600 rpm | | | E | 2F | 2XF | H | BA | | | | | | | | | | | | | |
| 25 | - | - | 324TC(X) | FIG. 9 | 6.25 | 10.5 | - | 0.67 | 5.25 | 15.75 | 12.87 | 29.43 | 8 | 1.10 | 3.15 | 13.68 | 16.2 | 15.91 | 2.36 | 5 | 11 | 12.5 |
| 30 | - | - | 326TC(X) | | 6.25 | 12 | - | 0.67 | 5.25 | 15.75 | 14.43 | 30.93 | 8 | 1.10 | 3.15 | 14.43 | 16.2 | 15.91 | 2.36 | 5 | 11 | 12.5 |

| FRAME SIZE | BB | BC | BD | BF | | BG | Key | | | Keyseat R | Shaft Extension | | | Terminal Housing | | | | Bearing | |
|------------|------|------|-------|-----|--------|-------|-------|-------|--------|-----------|-----------------|-------|------|------------------|-------|-------|------|-----------|--------------------|
| | | | | NO. | SIZE | | WIDTH | THICK | LENGTH | | N-W | U | V | AA | AB | AC | XB | DRIVE END | OPPOSITE DRIVE END |
| 324TC(X) | 0.25 | 0.25 | 13.58 | 4 | 5/8-11 | 10.75 | 0.5 | 0.5 | 3.91 | 1.845 | 5.25 | 2.125 | 5.15 | 1.73~2.00 | 13.47 | 10.98 | 5.19 | 6312 | 6310 |
| 326TC(X) | 0.25 | 0.25 | 13.58 | 4 | 5/8-11 | 11.50 | 0Z.5 | 0.5 | 3.91 | 1.845 | 5.25 | 2.125 | 5.15 | 1.73~2.00 | 13.47 | 10.98 | 5.19 | 6312 | 6310 |

- NOTE: 1. Dimension D tolerance : +0.00 inches, -0.03 inches.
 2. Dimension AK tolerance of Frame 324TC(X)~326TC(X) : +0.000 inches, -0.005 inches.
 3. Dimension U tolerance of Frame 324TC(X)~326TC(X) : +0.000 inches, -0.001 inches.
 4. Dimension R tolerance : +0.000 inches, -0.015 inches.
 5. Dimension V is length of straight part of shaft.

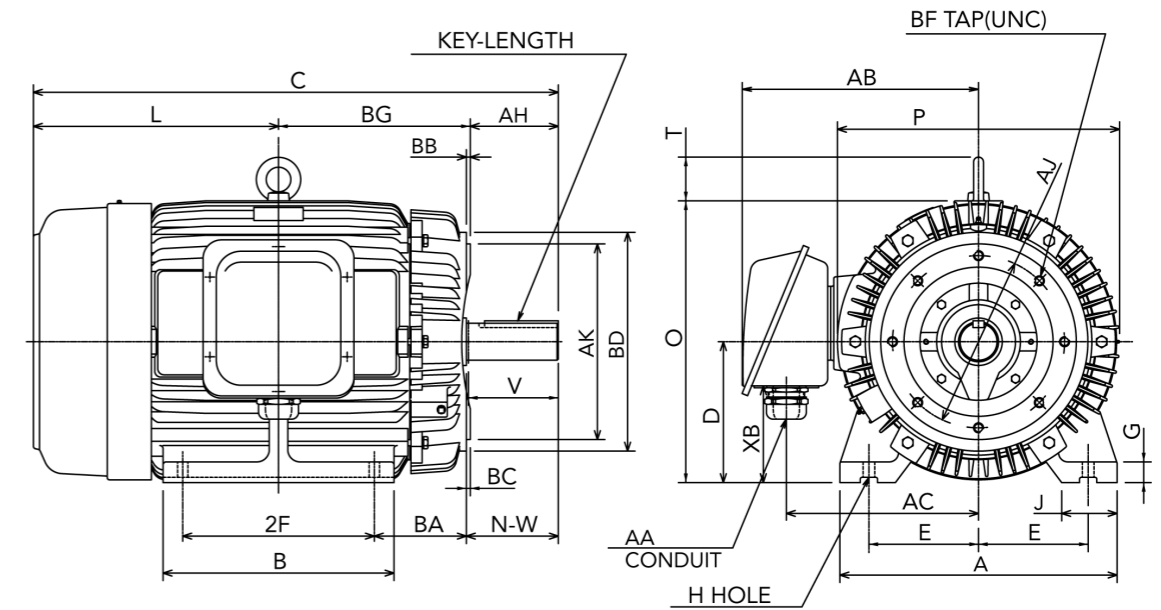


FIG.10

(Dimensions in mm)

| Output(HP) | | | FRAME SIZE | FIG. NO. | Mounting | | | | | A | B | C | D | G | J | L | O | P | T | AH | AJ | AK |
|------------|----------|----------|------------|----------|----------|-------|-----|------|------|-------|-------|-------|---|------|------|-------|----|-------|-----|------|----|------|
| 1200 rpm | 1800 rpm | 3600 rpm | | | E | 2F | 2XF | H | BA | | | | | | | | | | | | | |
| 40 | - | - | 364TC | FIG. 10 | 7 | 11.25 | - | 0.67 | 5.88 | 17.72 | 13.78 | 32.51 | 9 | 1.32 | 3.54 | 15.13 | 18 | 18.03 | 2.8 | 5.63 | 11 | 12.5 |
| 50 | - | - | 365TC | | 7 | 11.25 | - | 0.67 | 5.88 | 17.72 | 14.76 | 33.55 | 9 | 1.32 | 3.54 | 15.67 | 18 | 18.03 | 2.8 | 5.63 | 11 | 12.5 |

| FRAME SIZE | BB | BC | BD | BF | | BG | Key | | | Keyseat R | Shaft Extension | | | Terminal Housing | | | | Bearing | |
|------------|------|------|-------|-----|--------|-------|-------|-------|--------|-----------|-----------------|-------|------|------------------|-------|-------|------|-----------|--------------------|
| | | | | NO. | SIZE | | WIDTH | THICK | LENGTH | | N-W | U | V | AA | AB | AC | XB | DRIVE END | OPPOSITE DRIVE END |
| 364TC | 0.25 | 0.25 | 13.98 | 8 | 5/8-11 | 11.75 | 0.625 | 0.625 | 4.28 | 2.021 | 5.88 | 2.375 | 5.75 | 1.73~2.00 | 15.10 | 12.28 | 6.18 | 6313 | 6213 |
| 365TC | 0.25 | 0.25 | 13.98 | 8 | 5/8-11 | 12.25 | 0.625 | 0.625 | 4.28 | 2.021 | 5.88 | 2.375 | 5.75 | 1.73~2.00 | 15.10 | 12.28 | 6.18 | 6313 | 6213 |

- NOTE: 1. Dimension D tolerance : +0.00 inches, -0.03 inches.
 2. Dimension AK tolerance of Frame 364TC~365TC : +0.000 inches, -0.005 inches.
 3. Dimension U tolerance of Frame 364TC~365TC : +0.000 inches, -0.001 inches.
 4. Dimension R tolerance : +0.000 inches, -0.015 inches.
 5. Dimension V is length of straight part of shaft.



For more information,
please visit TECO website.